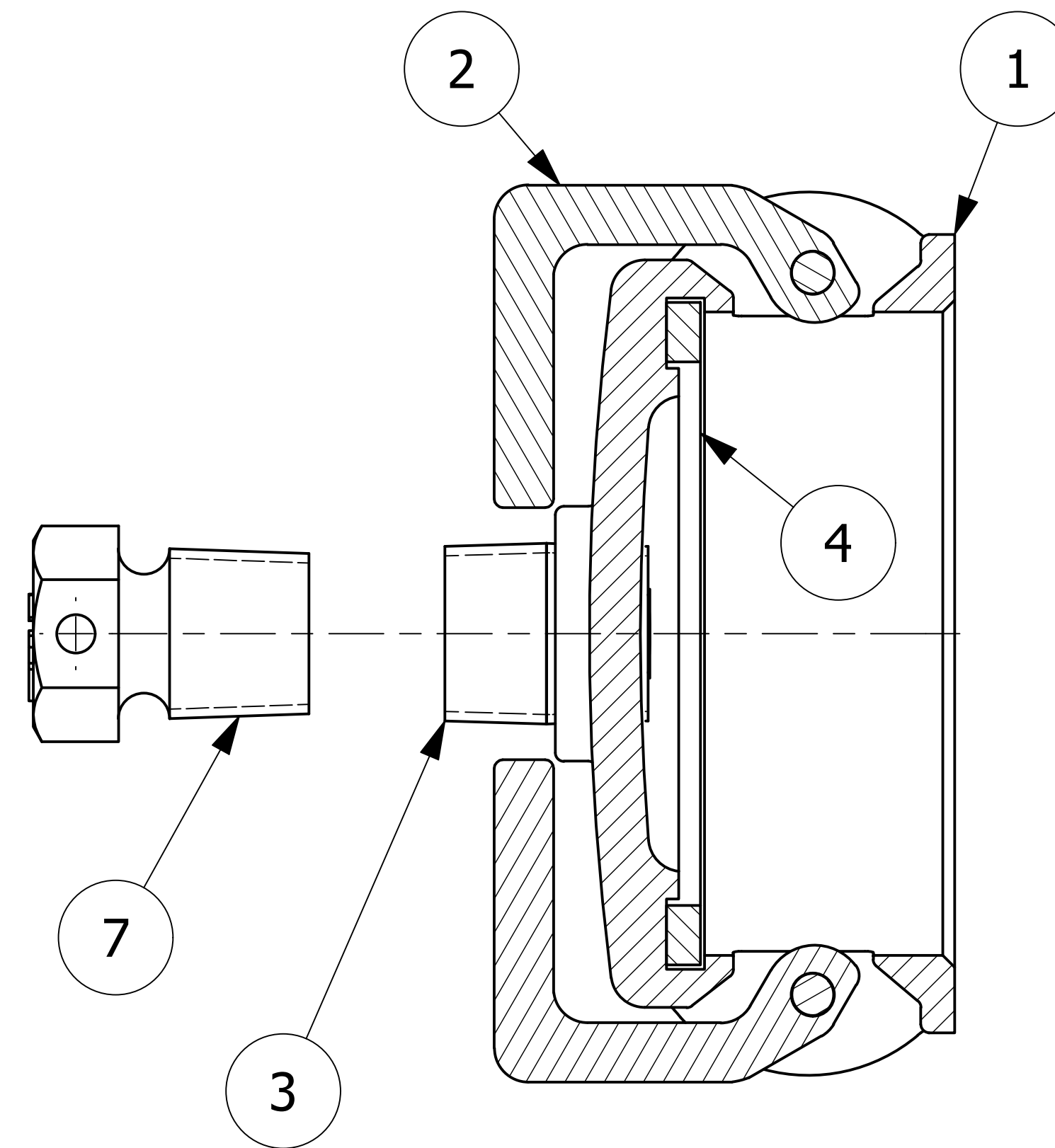
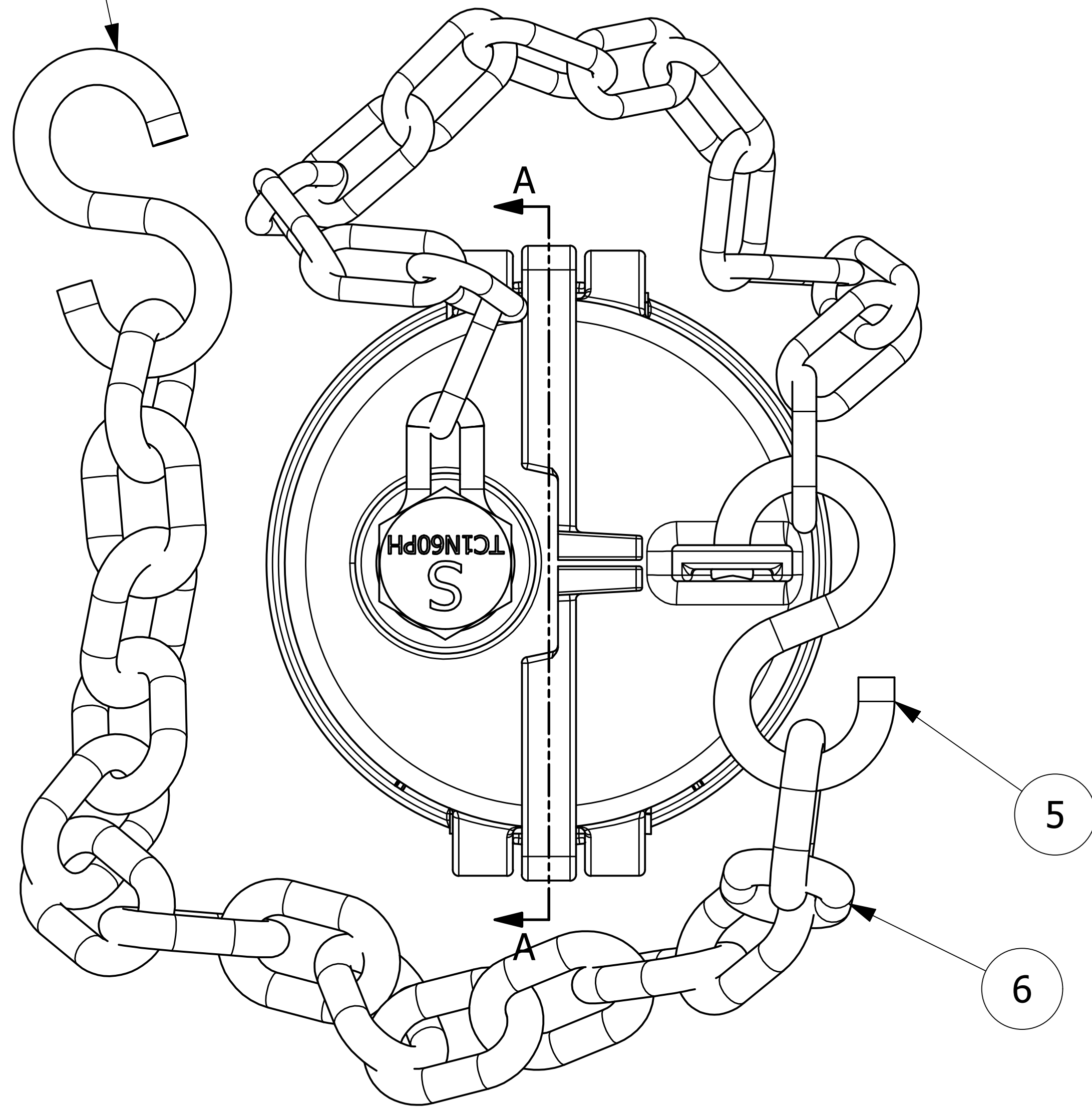


8 7 6 5 4 3 2 1

NO.	PART NAME	PART#	REQ'D	MATERIAL
1	QUICK CONNECT CAP 4" CAMMED	K4SDC	1	316 SS ASTM# A743 GRADE CF-8M
2	CAM ARMS CROSSOVER	KLA4	1	BRONZE
3	NIPPLE 1" CLOSE	N1CS440	1	304 SS
4	DUST CAP GASKET 4"	PD4DCGW	1	WHITE FDA NITRILE
5	S-HOOK 3/8"X3 1/2"	SC38SHS	2	18-8 SS
6	CHAIN LINK 3/8"	SC80	16	18-8 SS
7	PLUG ASSEMBLY 1"	TC1N60P2AH	1	NITRONIC 60

S-HOOK SHIPS LOOSE



SECTION A-A

NOTES:

1. THIS ASSEMBLY IS NOT DOT APPROVED AND CAN BE USED ONLY ON AAR STENCILED CARS.
2. QUICK CONNECT MEETS A-A-59326.
3. AAR APPROVAL # E-232133.
4. THREAD PROTECTION IS REQUIRED FOR PLUG AND NIPPLE FOR SHIPPING.

D	RPS	3/26/24	AAR APPROVAL # WAS E-139514.
C	RJP	6/25/14	AAR APPROVAL # WAS E-039015, MIL SPEC WAS MIL-C-27487G
B	CHL	5/24/06	REPLACED K1X2SN WITH NICS440
A	CHL	1/12/04	AAR APPROVAL # WAS E-939034
REV	BY	DATE	DESCRIPTION

UNLESS OTHERWISE SPECIFIED DIMENSIONAL TOLERANCES	DRAWN BY:	FOD
FRACTIONAL: ±1/16	CHECKED BY:	ACC
X.XX: ±.03	PROTOTYPE DATE:	8/7/2000
X.XXX: ±.015	APPROVED FOR PRODUCTION BY:	ACC
ANGULAR: ±1°	PRODUCTION DATE:	8/7/2000
DEBURR ALL SHARP EDGES. ALL MACHINED SURFACES TO HAVE A 125 RMS FINISH UNLESS NOTED OTHERWISE.	SIZE:	D
THIRD ANGLE PROJECTION	DRAWING #:	14864

SALCO PRODUCTS, INC.

PART NAME: **QUICK CONNECT CAP 4" KAMMED**

MATERIAL: **SEE BOM**

PROJECT #: **000807** SHEET #: **1 OF 1** SCALE: **1:1**

PART #: **K4SN62CNDC2A**

8 7 6 5 4 3 2 1