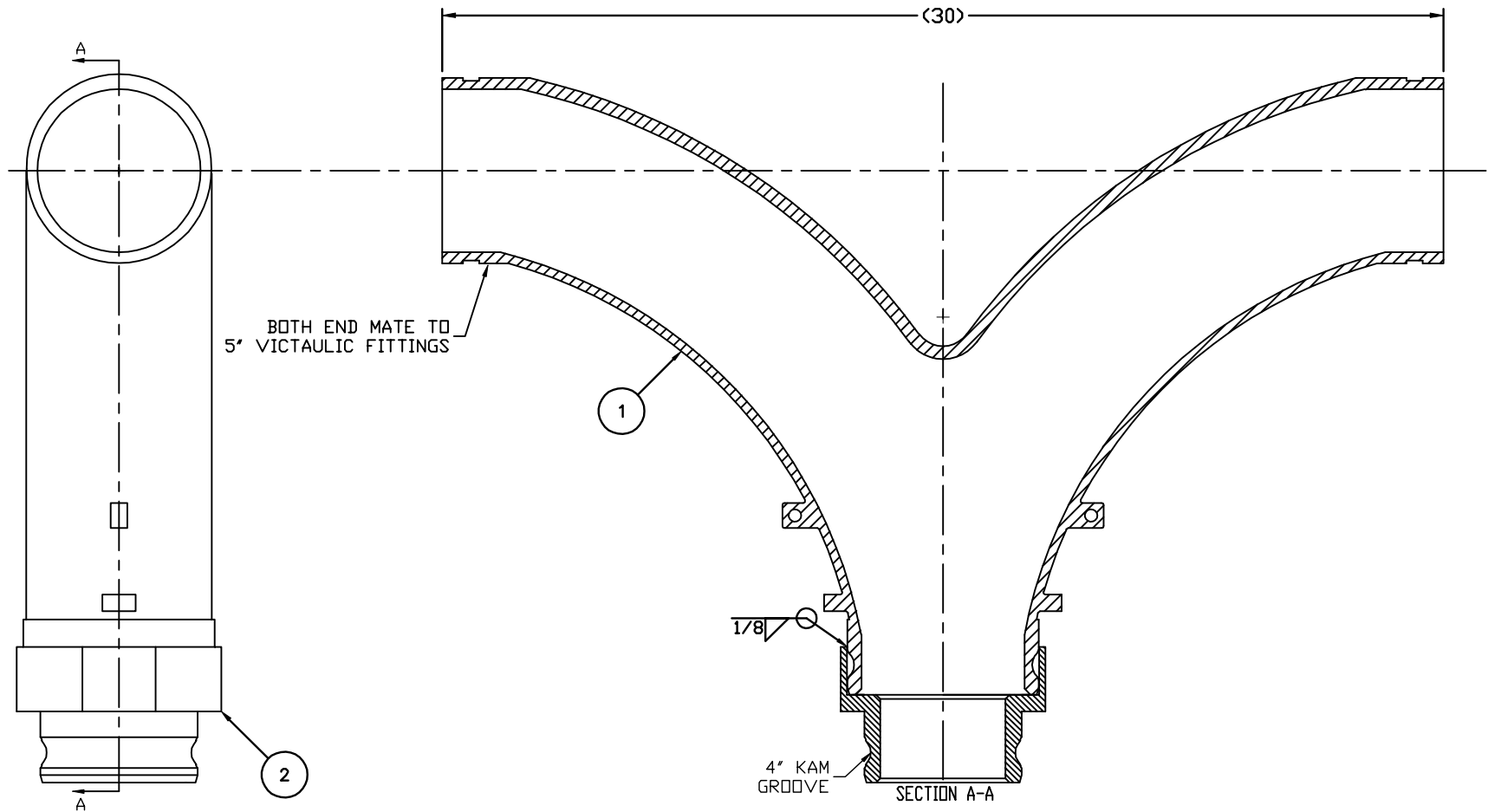


NO.	PART NAME	PART #	REQ'D	MATERIAL
1	Y-PIPE 5'	PDA5Y	1	ALUMINUM
2	ADAPTER 5"X4"	PDK54AA2	1	ALUMINUM



BOTH END MATE TO 5" VICTAULIC FITTINGS

1

1/8

4" KAM GROOVE

SECTION A-A

2

NOTES:

- PART MUST PASS QAP4E-1.
- WELD MUST BE IN ACCORDANCE WITH AWS (OR APPROVED EQUIVALENT) BY CERTIFIED WELDERS. PROCEDURES TO BE VENDOR SUPPLIED AND SALCO APPROVED.

B	P.JG	7-27-07	ADDED NOTE
A	ACC	3-5-03	NEW PART ENTERED INTO SYSTEM
REV	BY	DATE	DESCRIPTION

UNLESS OTHERWISE SPECIFIED DIMENSIONAL TOLERANCES				2D					
FRACTIONAL	±1/16				DRAWN BY	ACC	CHKD BY:	SCALE	N/A
XXX	±0.03	MATERIAL	SEE BOM						
XXXX	±0.015	PART NAME	Y-PIPE 5"X4"						
ANGULAR	±1°								
THIS DRAWING IS THE PROPERTY OF SALCO PRODUCTS INC. IT IS TO BE USED ONLY FOR THE PROJECT AND DATE SPECIFIED HEREIN. IT IS TO BE KEPT IN THE PROJECT OFFICE AND NOT REPRODUCED OR COPIED WITHOUT THE WRITTEN PERMISSION OF SALCO PRODUCTS INC.		PROJECT #	PROTOTYPE (AND DATE)		APPROVED FOR PRODUCTION				
THIRD ANGLE PROJECTION		DRAWING #	E17696		PART #				
				ACC					