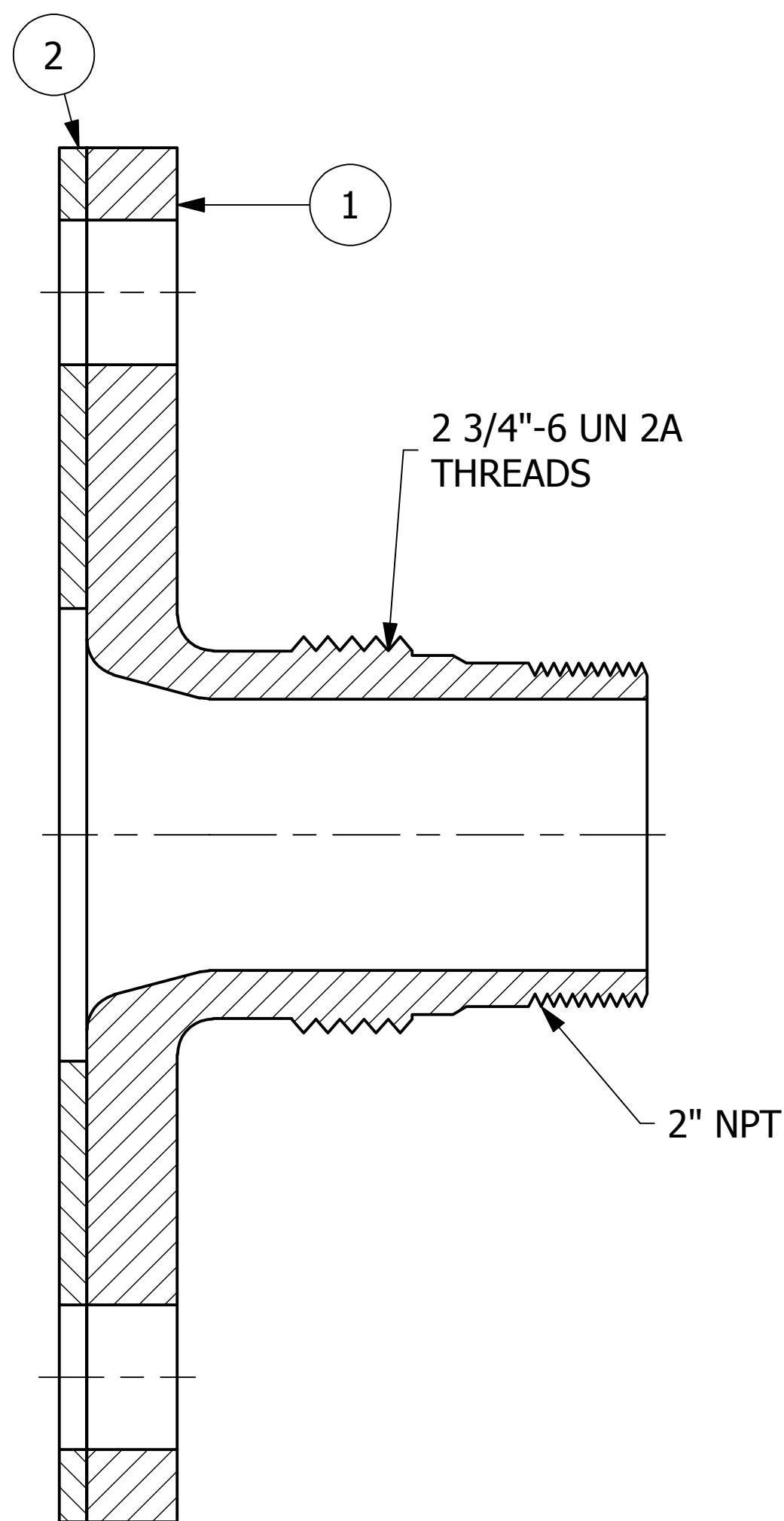
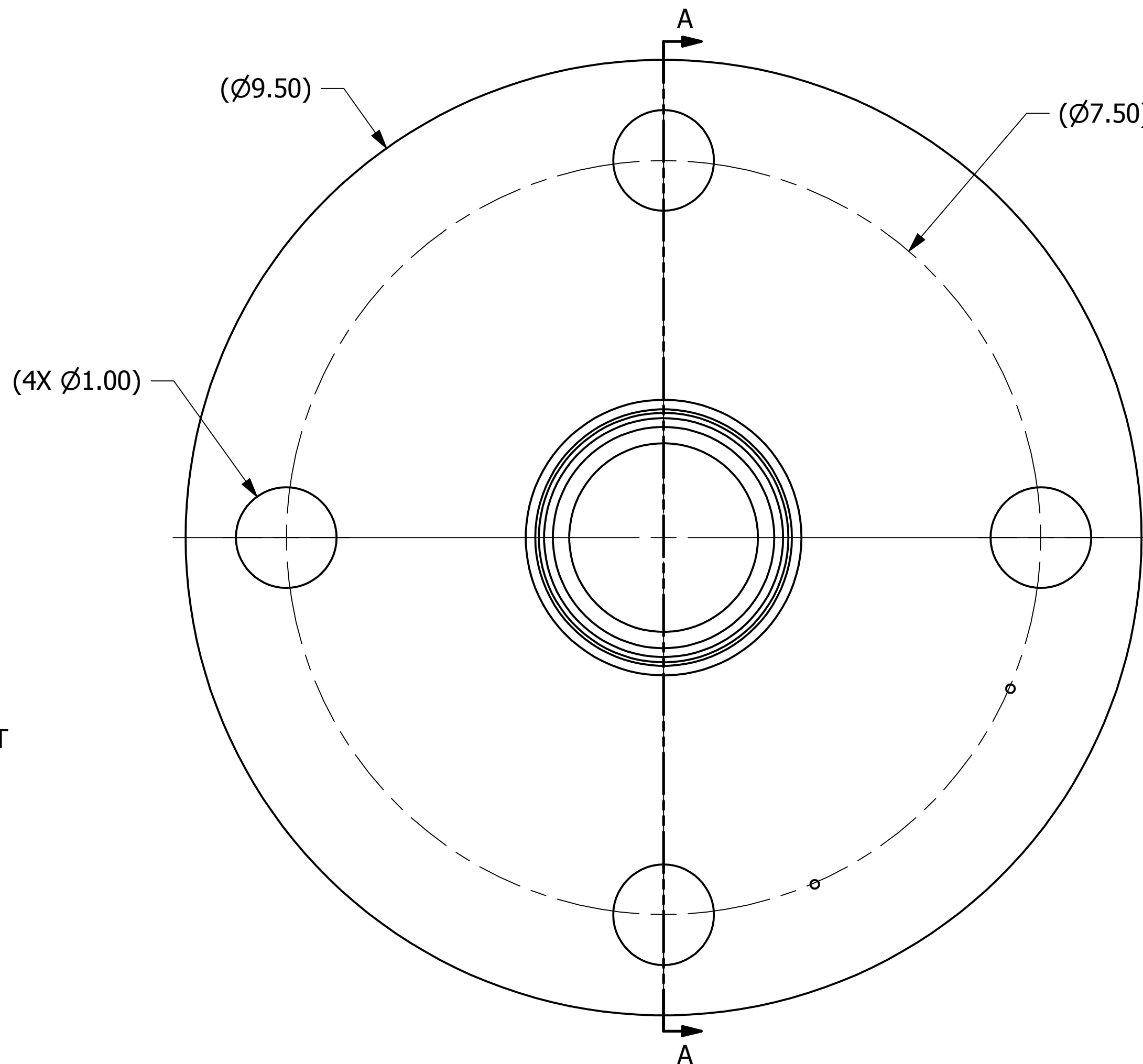


NO.	PART NAME	PART #	REQ'D	MATERIAL
1	TOP FITTING 2" FLANGED	TE2S75FAS	1	316L SS
2	FLANGE GASKET 2"	TE275FG07	1	VITON B



SECTION A-A



- NOTES:
 1. GASKET THICKNESS IS 3/16"
 2. TOTAL FLANGE HEIGHT IS 3 7/8"

REV	BY	DATE	DESCRIPTION
A	GS	6-6-12	DRAWING ADDED TO NETWORK.

<small>UNLESS OTHERWISE SPECIFIED DIMENSIONAL TOLERANCES FRACTIONAL: ±1/16 X.XX: ±.03 X.XXX: ±.015 ANGLE: ±1° DEBURR ALL SHARP EDGES. ALL MACHINED SURFACES TO HAVE A 125 RMS FINISH UNLESS NOTED OTHERWISE.</small>	DRAWN BY:	GS
	CHECKED BY:	CHL
	PROTOTYPE BY:	GS
	PROTOTYPE DATE:	11/26/2002
	APPROVED FOR PRODUCTION BY:	CHL
	PRODUCTION DATE:	11/26/2002

SALCO PRODUCTS, INC.		
PART NAME: TOP FITTING ASSEMBLY 2" FLANGED		
MATERIAL: SEE BOM		
PROJECT #:	SHEET #:	SCALE:
120505	1 OF 1	1:1
DRAWING #:	PART #:	
C33376	TE2S75FAS07	

