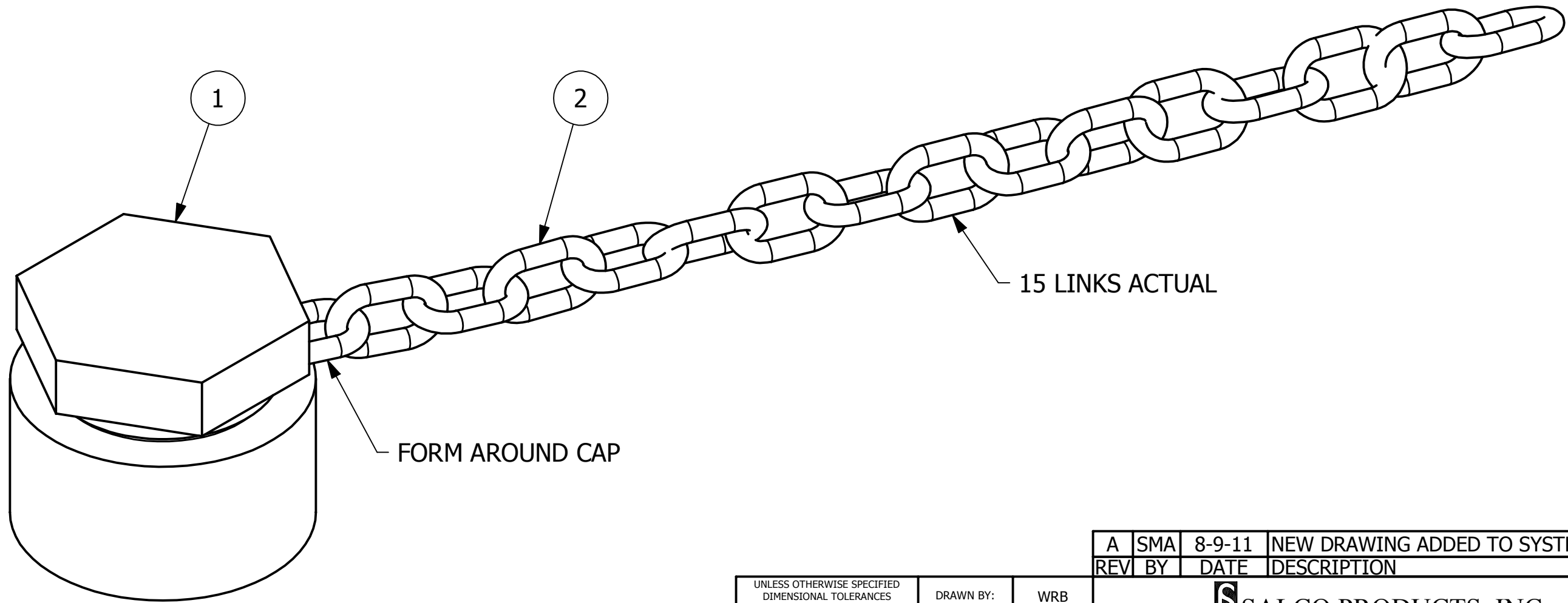


NO.	PART NAME	PART#	REQ'D	MATERIAL
1	PIPE CAP 2 1/2"	TI212304P	1	304 SS
2	CHAIN ASSEMBLY	CH3316PA	1	18-8 SS



A	SMA	8-9-11	NEW DRAWING ADDED TO SYSTEM
REV	BY	DATE	DESCRIPTION

<small>UNLESS OTHERWISE SPECIFIED DIMENSIONAL TOLERANCES</small> FRACTIONAL: $\pm 1/16$ X.XX: $\pm .03$ X.XXX: $\pm .015$ ANGULAR: $\pm 1^\circ$ <small>DEBURR ALL SHARP EDGES. ALL MACHINED SURFACES TO HAVE A 125 RMS FINISH UNLESS NOTED OTHERWISE.</small> <small>THIRD ANGLE PROJECTION</small> 	DRAWN BY:	WRB
	CHECKED BY:	VD
	PROTOTYPE BY:	WRB
	PROTOTYPE DATE:	2/26/2010
	APPROVED FOR PRODUCTION BY:	VD
	PRODUCTION DATE:	8/9/2011

SALCO PRODUCTS, INC.		
PART NAME: PIPE CAP ASSEMBLY 2 1/2"		
MATERIAL: SEE BOM		
PROJECT #: WAG0781	SHEET #: 1 OF 1	SCALE: 1:1
DRAWING #: B28217	PART #: TI212304PA	

THIS PRINT, PROPERTY OF SALCO PRODUCTS INC., CONTAINS PROPRIETARY INFORMATION AND MUST NOT BE COPIED, REPRODUCED, OR USED DETRIMENTALLY TO OUR INTEREST.