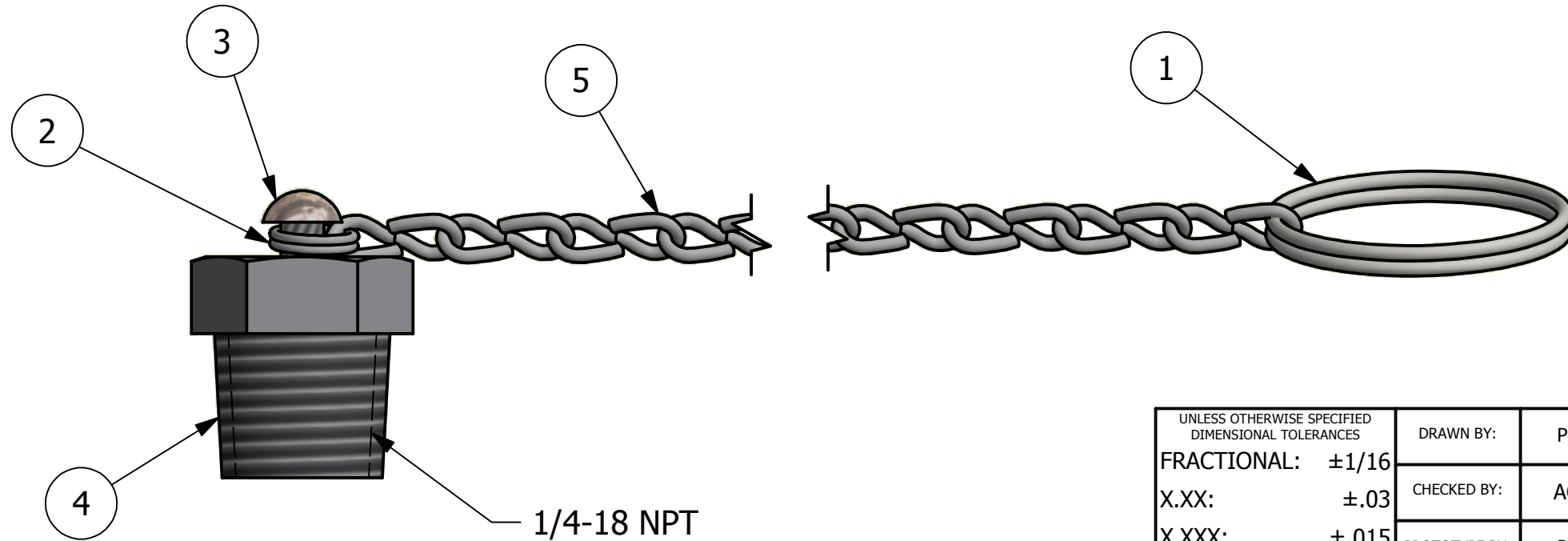
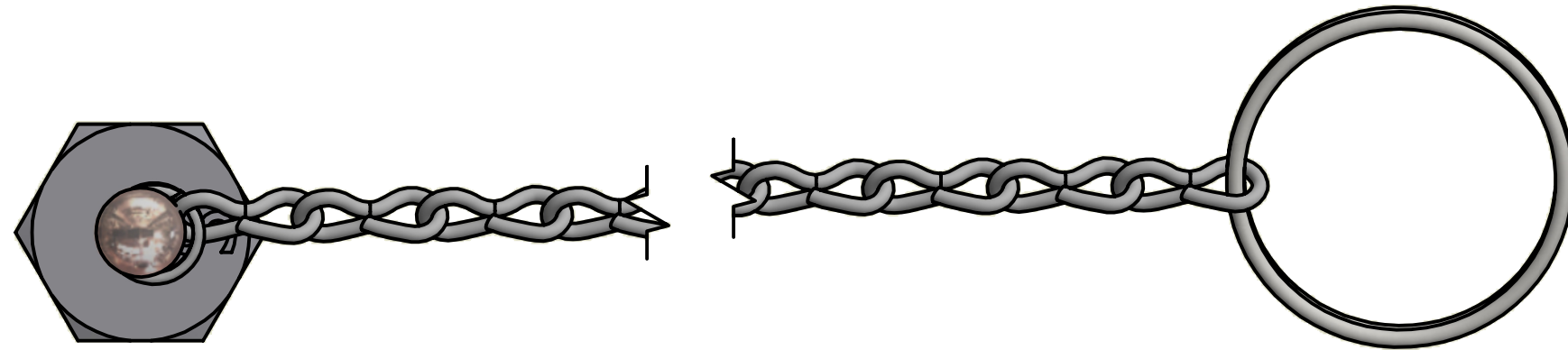


NOTES:

- BEFORE ASSEMBLY, DRILL $\varnothing.120$ X $.250$ DEEP IN THE CENTER OF THE TOP OF TC25XSP. (USE #31 DRILL BIT)
- LENGTH OF CHAIN IS APPROXIMATELY 8".

NO	PART NAME	PART#	REQ'D	MATERIAL
1	SPLIT RING 1"	SCA115R1	1	CS Z/P
2	SPLIT RING 7/32"	SR92204	1	CS Z/P
3	U-DRIVE SCREW #6X3/8"	SVH261DR	1	18-8 SS
4	PLUG 1/4"	TC025XSP	1	316 SS
5	SINGLE JACK CHAIN	TCP2C12	.667	CS Z/P



REV	BY	DATE	DESCRIPTION
B	WEB	4-19-18	UPDATED TO CURRENT DRAFTING STANDARDS, REPLACED TCP6S W/ SVH261DR
A	PJG	1-15-04	RELEASED FOR PRODUCTION

<small>UNLESS OTHERWISE SPECIFIED DIMENSIONAL TOLERANCES</small> FRACTIONAL: $\pm 1/16$ X.XX: $\pm .03$ X.XXX: $\pm .015$ ANGULAR: $\pm 1^\circ$ <small>DEBURR ALL SHARP EDGES. ALL MACHINED SURFACES TO HAVE A 125 RMS FINISH UNLESS NOTED OTHERWISE.</small>	DRAWN BY:	PJG
	CHECKED BY:	ACC
	PROTOTYPE BY:	PJG
	PROTOTYPE DATE:	1/4/2014
	APPROVED FOR PRODUCTION BY:	PJG
THIRD ANGLE PROJECTION	PRODUCTION DATE:	1/15/2004

SALCO PRODUCTS, INC.

PART NAME: **PLUG ASSEMBLY 1/4"**

MATERIAL: **SEE BOM**

PROJECT #: _____ SHEET #: **1 OF 1** SCALE: **2:1**

DRAWING #: **B18738** PART #: **TC025XSPA**