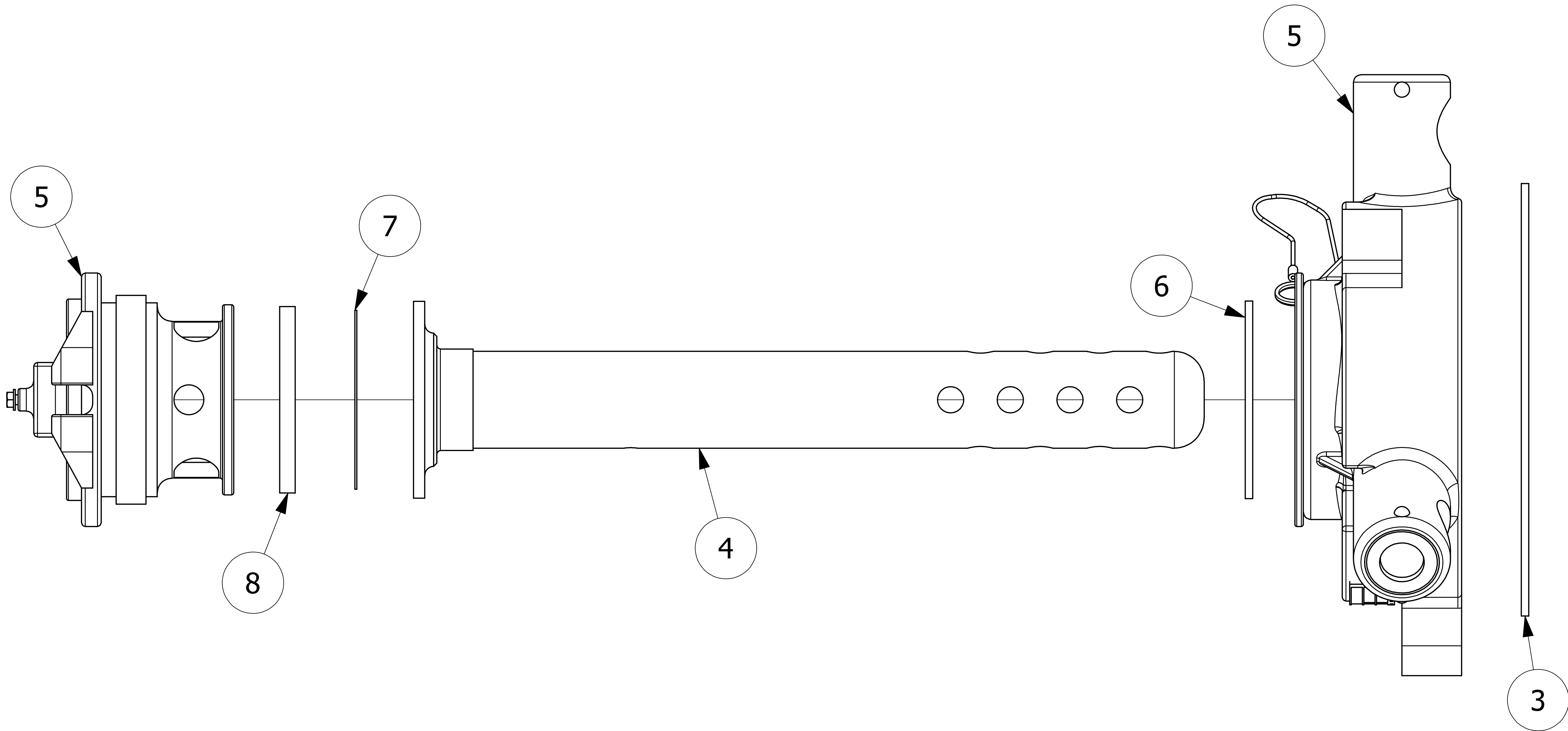



NO	PART NAME	PART #	REQ'D	MATERIAL
1	ID PLATE 3" X 3/4"	A15152	.5	ALUMINUM
2	DRIVE SCREW TYPE U #2 X 1/8"	DR218	2	18-8 SS
3	QUICK INSPECT FLANGE GASKET	FG5509	1	WHITE FDA PTFE
4	SURGE PROTECTOR	HSSPRD33	1	SALCO PE
5	QUICK INSPECT SAFETY VENT	QI261BSA	1	BLACK NORYL
6	QI RETAINER GASKET	QI261G9	1	WHITE FDA PTFE
7	QI RUPTURE DISK GASKET	QI261RDG9	1	WHITE FDA PTFE
8	RUPTURE DISC (SOLD SEPARATELY)			



- NOTES:
1. CUSTOMERS RESPONSIBILITY FOR COMPATIBILITY OF COMMODITY.
 2. AAR APPROVAL # PRD-162102.
 3. SEE DOCUMENT QAP5A-1 FOR MARKING PROCEDURE.
 4. FASTEN ID PLATE WITH DRIVE SCREWS.

C	JG	2-7-17	AAR APPROVAL # WAS SRD-063000
B	TAK	9-4-13	ADDED A15152, DR218 & QAP5A-1 NOTE
A	PJG	10-25-07	NEW PART ADDED TO SYSTEM
REV	BY	DATE	DESCRIPTION

UNLESS OTHERWISE SPECIFIED DIMENSIONAL TOLERANCES FRACTIONAL: $\pm 1/16$ X.XX: $\pm .03$ X.XXX: $\pm .015$ ANGULAR: $\pm 1^\circ$ DEBURR ALL SHARP EDGES. ALL MACHINED SURFACES TO HAVE A 125 RMS FINISH UNLESS NOTED OTHERWISE. THIRD ANGLE PROJECTION	DRAWN BY:	PJG	<div> SALCO PRODUCTS, INC.</div>		
	CHECKED BY:	WRB			
	PROTOTYPE BY:	PJG	PART NAME: QUICK INSPECT SAFETY VENT		
	PROTOTYPE DATE:	10/25/2007	MATERIAL: SEE BOM		
THIRD ANGLE PROJECTION	APPROVED FOR PRODUCTION BY:	PJG	PROJECT #:	WAG0469	SHEET #:
	PRODUCTION DATE:	10/25/2007	DRAWING #:	E24242	PART #:
			SCALE: 1:1		
			QI261HSP09A		