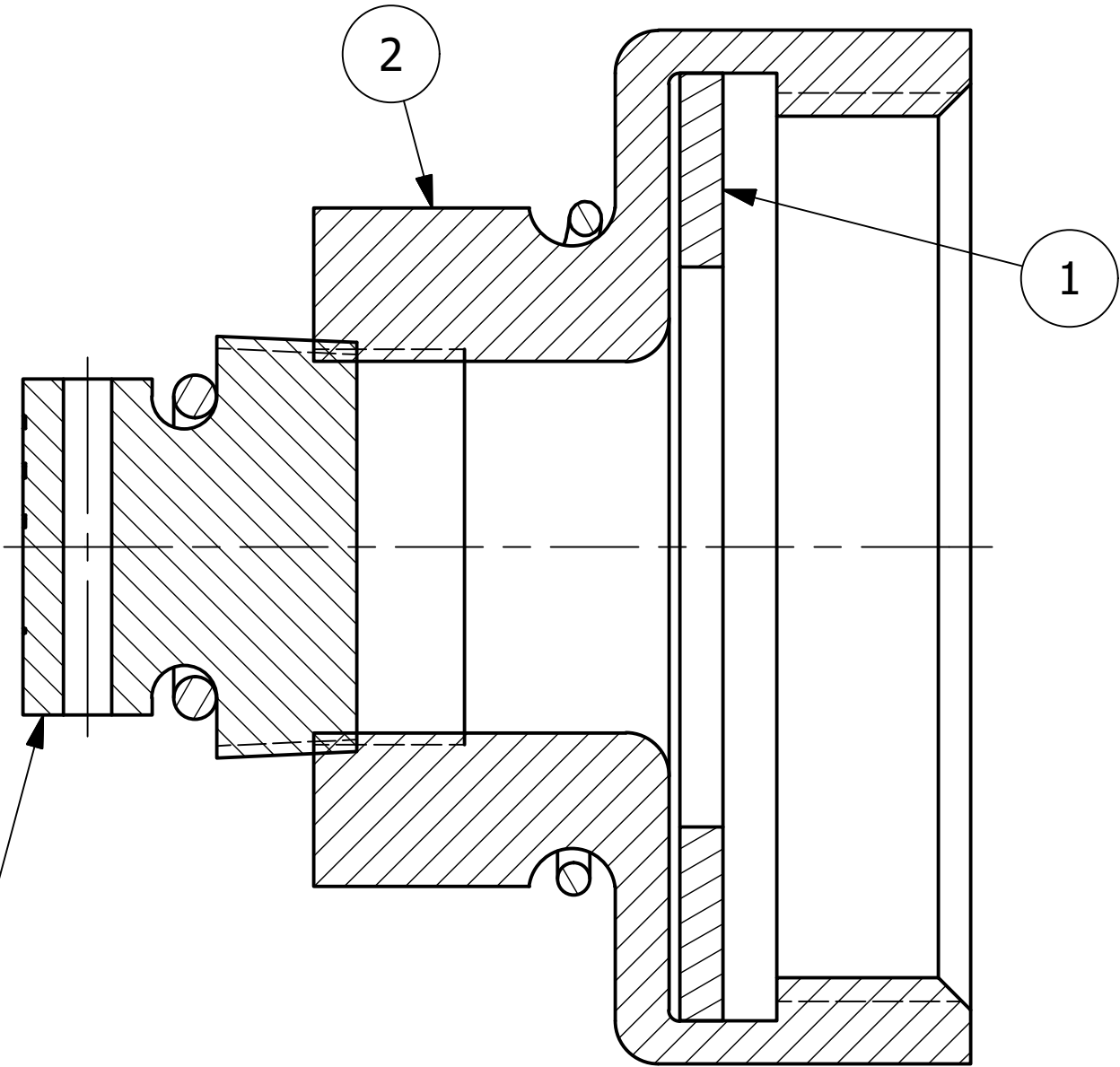
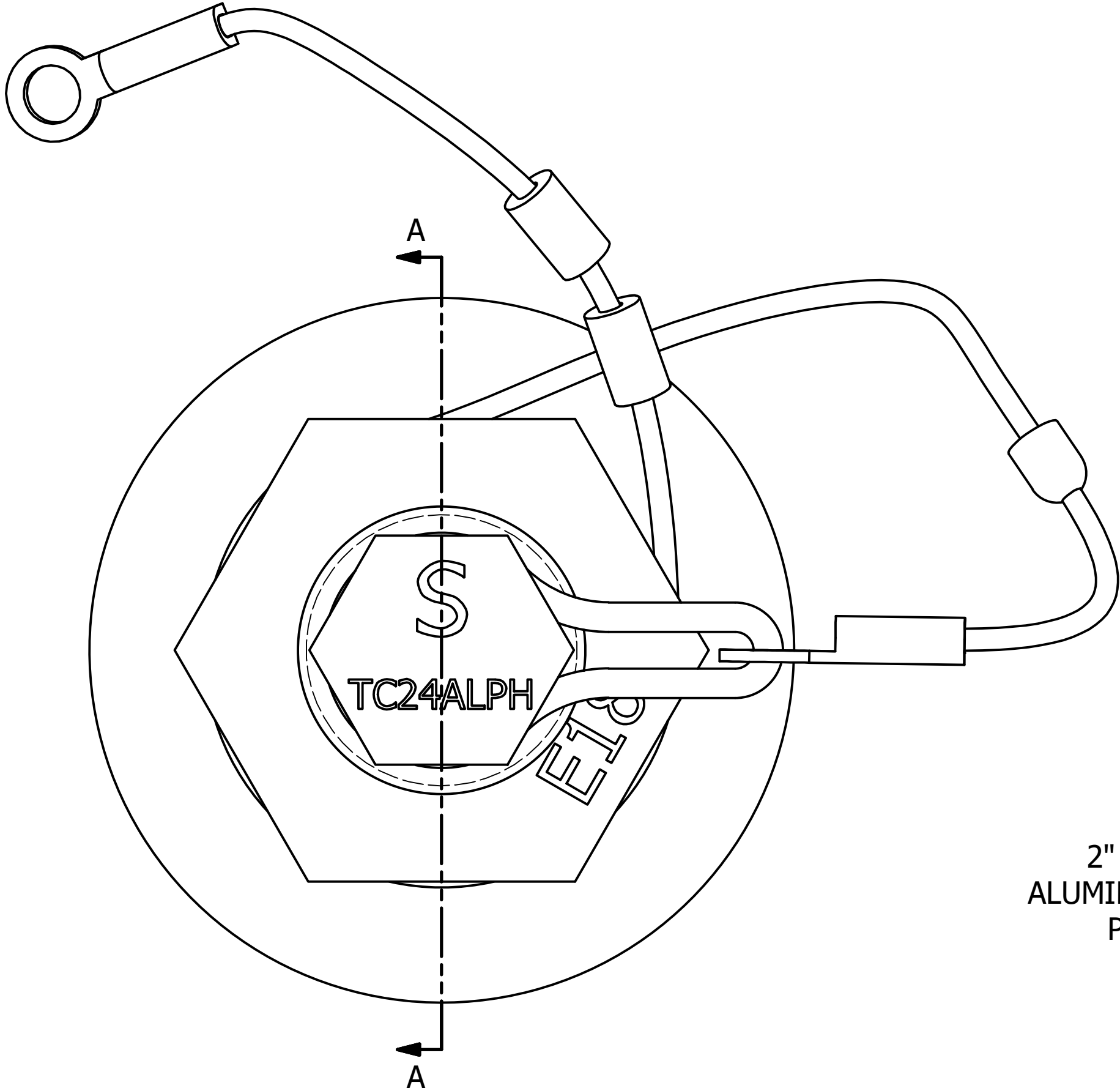


NO.	PART NAME	PART #	REQ'D	MATERIAL
1	GASKET 3 1/4"X5 1/2"	G3145502	1	FDA WHITE BUNA-N
2	BOTTOM OUTLET CAP 4"	TC44BCALA	1	ALUMINUM



NOTE:
5 1/4"-4 UN - 2B THREADS CONFORM TO ANSI B1.1 STANDARD
AND FIGURE E18 FROM AAR TANK CAR MANUAL.

C	CHL	2-27-19	UPDATED VIEW OF TC44BCALA
B	CHL	1-17-08	UPDATED TC44BCALA VIEW
A	CHL	9-18-07	NEW PART ADDED TO SYSTEM
REV	BY	DATE	DESCRIPTION

UNLESS OTHERWISE SPECIFIED DIMENSIONAL TOLERANCES FRACTIONAL: $\pm 1/16$ X.XX: $\pm .03$ X.XXX: $\pm .015$ ANGLE: $\pm 1^\circ$ DEBURR ALL SHARP EDGES. ALL MACHINED SURFACES TO HAVE A 125 RMS FINISH UNLESS NOTED OTHERWISE. THIRD ANGLE PROJECTION	DRAWN BY:	CHL
	CHECKED BY:	PJG
	PROTOTYPE BY:	CHL
	PROTOTYPE DATE:	7/9/2007
	APPROVED FOR PRODUCTION BY:	CHL
	PRODUCTION DATE:	9/18/2007

SALCO PRODUCTS, INC.			
PART NAME: BOTTOM OUTLET CAP 4"			
MATERIAL: SEE BOM			
PROJECT #:	040914	SHEET #:	1 OF 1
DRAWING #:	C23807	PART #:	TC44BCAL2A
		SCALE:	1:1