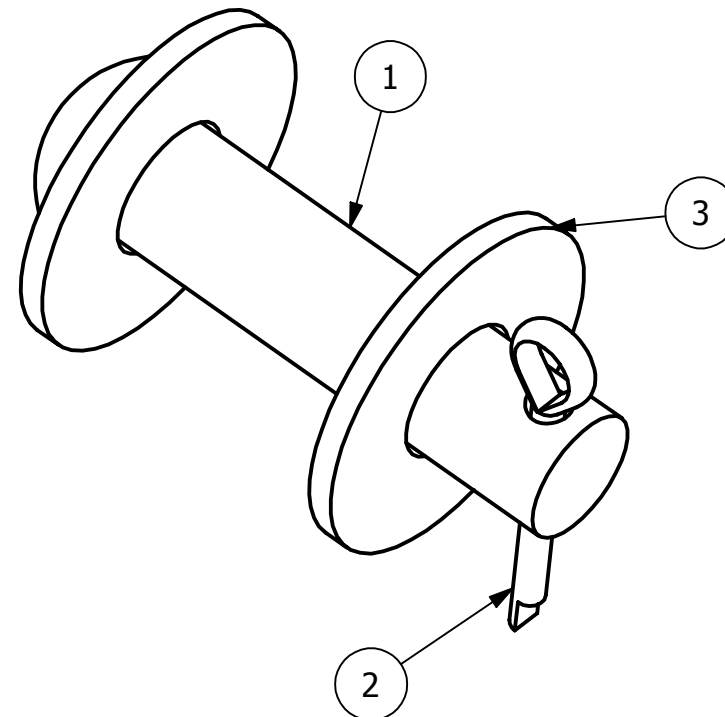
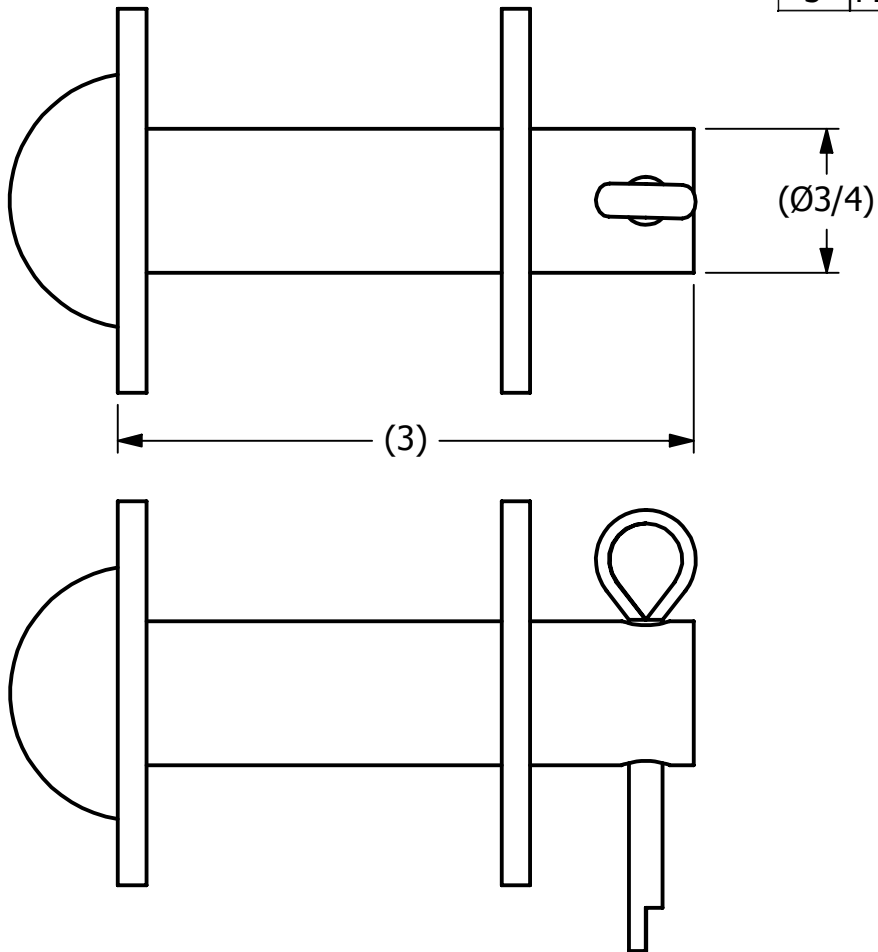


2

1

NO.	PART NAME	PART#	REQ'D	MATERIAL
1	BUTTON HEAD ROD	BHR343HC1	1	CS
2	COTTER PIN 3/16"X1 1/2"	CP31615C1	1	CS
3	FLAT WASHER 3/4" USS	WASH34	2	CS



A	WEB	7-17-17	UPDATED TO CURRENT DRAFTING STANDARDS, PART DESCRIPTION WAS BUTTON HEAD RIVET ASSEMBLY
REV	BY	DATE	DESCRIPTION

NOTE:
 3/4" BUTTON HEAD ROD WAS MADE TO FIT
 7/8" AND 3/4" EYEBOLTS. IT MAY BE USED
 WITH A 1" EYEBOLT IF THE CUSTOMER
 REQUESTS IT BUT IT IS NOT A
 RECOMMENDATION MADE BY SALCO.

<small>UNLESS OTHERWISE SPECIFIED DIMENSIONAL TOLERANCES FRACTIONAL: ±1/16 X.XX: ±.03 X.XXX: ±.015 ANGULAR: ±1° DEBURR ALL SHARP EDGES. ALL MACHINED SURFACES TO HAVE A 125 RMS FINISH UNLESS NOTED OTHERWISE. THIRD ANGLE PROJECTION</small>	DRAWN BY:	CHL
	CHECKED BY:	ACC
	PROTOTYPE BY:	CHL
	PROTOTYPE DATE:	1/12/2001
	APPROVED FOR PRODUCTION BY:	ACC
	PRODUCTION DATE:	1/12/2001

SALCO PRODUCTS, INC.		
PART NAME: BUTTON HEAD ROD ASSEMBLY		
MATERIAL: SEE BOM		
PROJECT #:	010105	SHEET #: 1 OF 1
SCALE:	1:1	
DRAWING #:	A15341	PART #:
		BHR343HC1A

2

1