

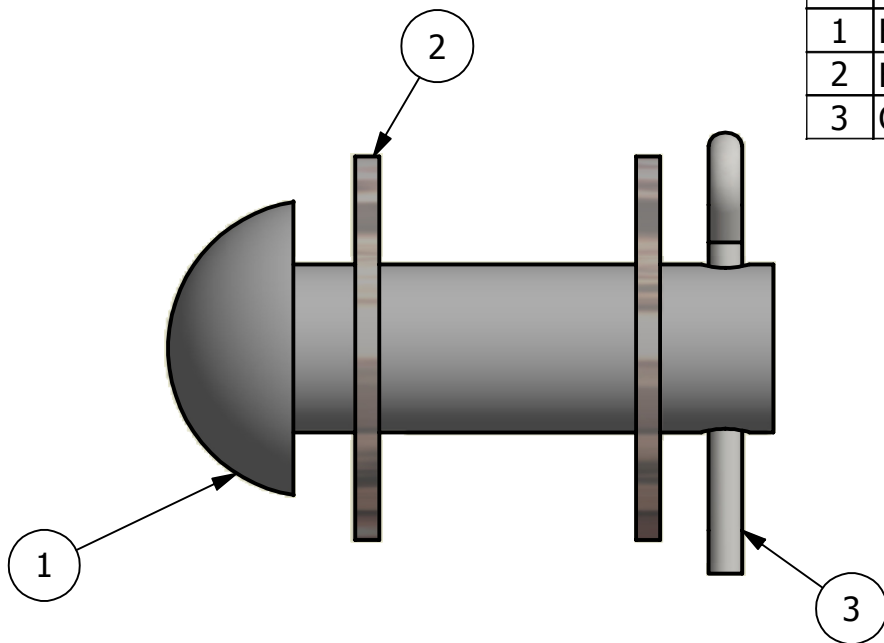
2



1

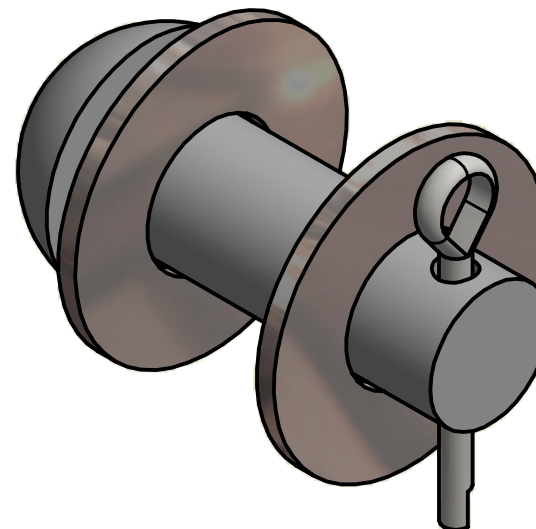
NO.	PART NAME	PART#	REQ'D	MATERIAL
1	BUTTON HEAD ROD	BHR7825HC1	1	CS
2	FLAT WASHER 7/8"	WASH78R	2	CS Z/P
3	COTTER PIN 3/16"X1 1/2"	CP31615C1	1	CS

B

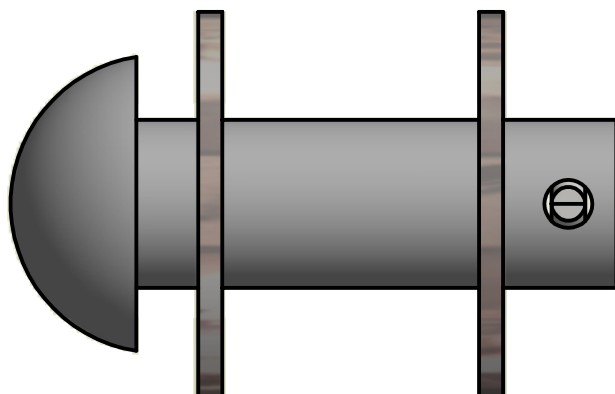


1

3



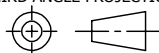
B



A

C	WEB	12-21-16	PART DESCRIPTION WAS BUTTON HEAD RIVET, UPDATED TO CURRENT CAD STANDARDS
B	WEB	10-11-00	REPLACED CP150 WITH CP31615C1
A	FOD	4-5-00	ADDED NOTE
REV	BY	DATE	DESCRIPTION

UNLESS OTHERWISE SPECIFIED
DIMENSIONAL TOLERANCES
FRACTIONAL: $\pm 1/16$
X.XX: $\pm .03$
X.XXX: $\pm .015$
ANGULAR: $\pm 1^\circ$
DEBURR ALL SHARP EDGES.
ALL MACHINED SURFACES TO
HAVE A 125 RMS FINISH
UNLESS NOTED OTHERWISE.



DRAWN BY:	FOD
CHECKED BY:	SAB
PROTOTYPE BY:	FOD
PROTOTYPE DATE:	7/28/1999
APPROVED FOR PRODUCTION BY:	
PRODUCTION DATE:	



PART NAME: BUTTON HEAD ROD ASSEMBLY		
MATERIAL: SEE BOM		
PROJECT #:	SHEET #: 1 OF 1	SCALE: 1:1
DRAWING #: A13640	PART #: BHR7825HC1A	

NOTE:
7/8" BUTTON HEAD ROD WAS MADE TO FIT 7/8"
AND 1" EYEBOLTS.

2



1