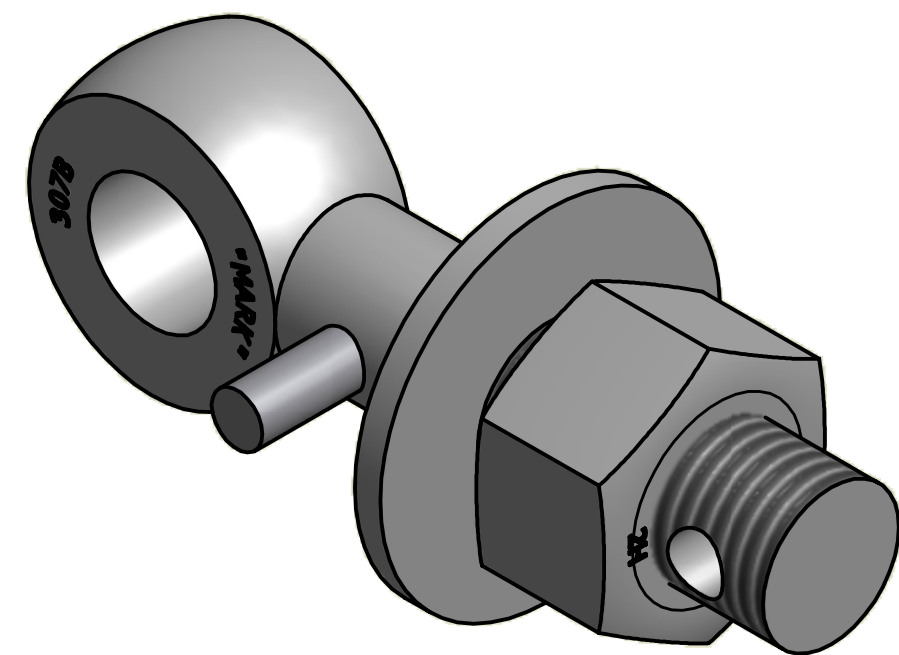
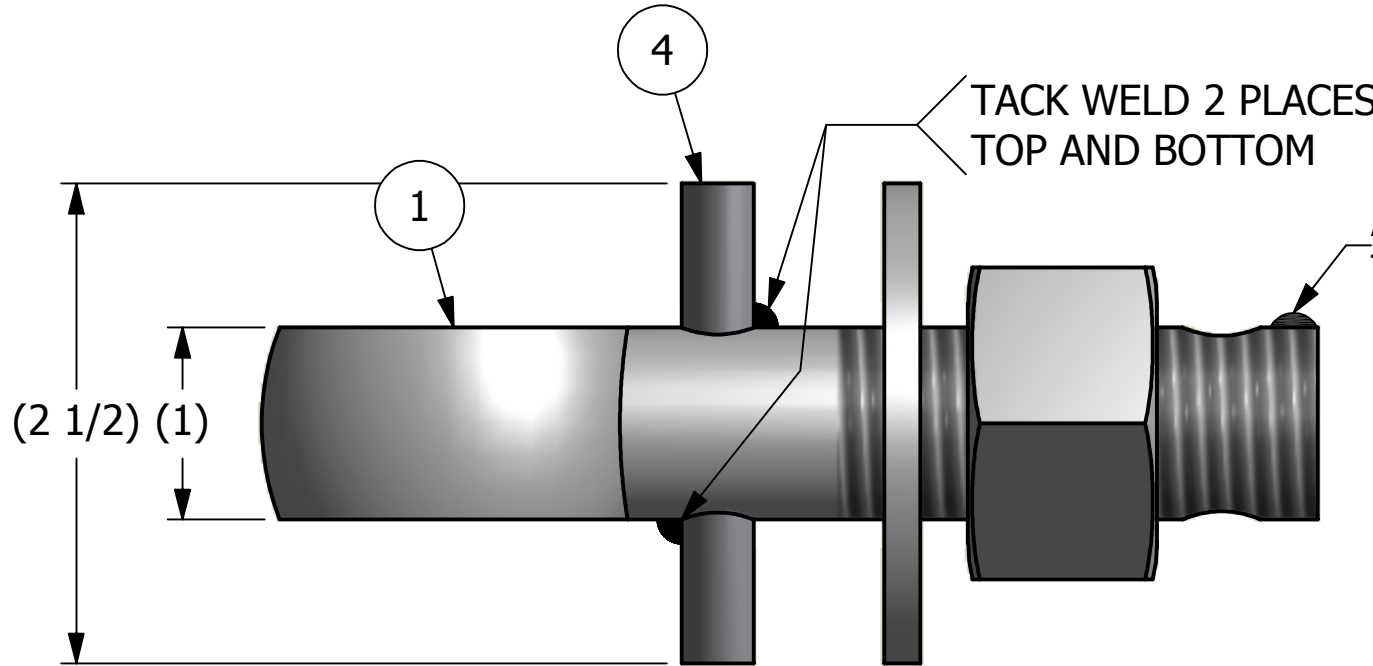
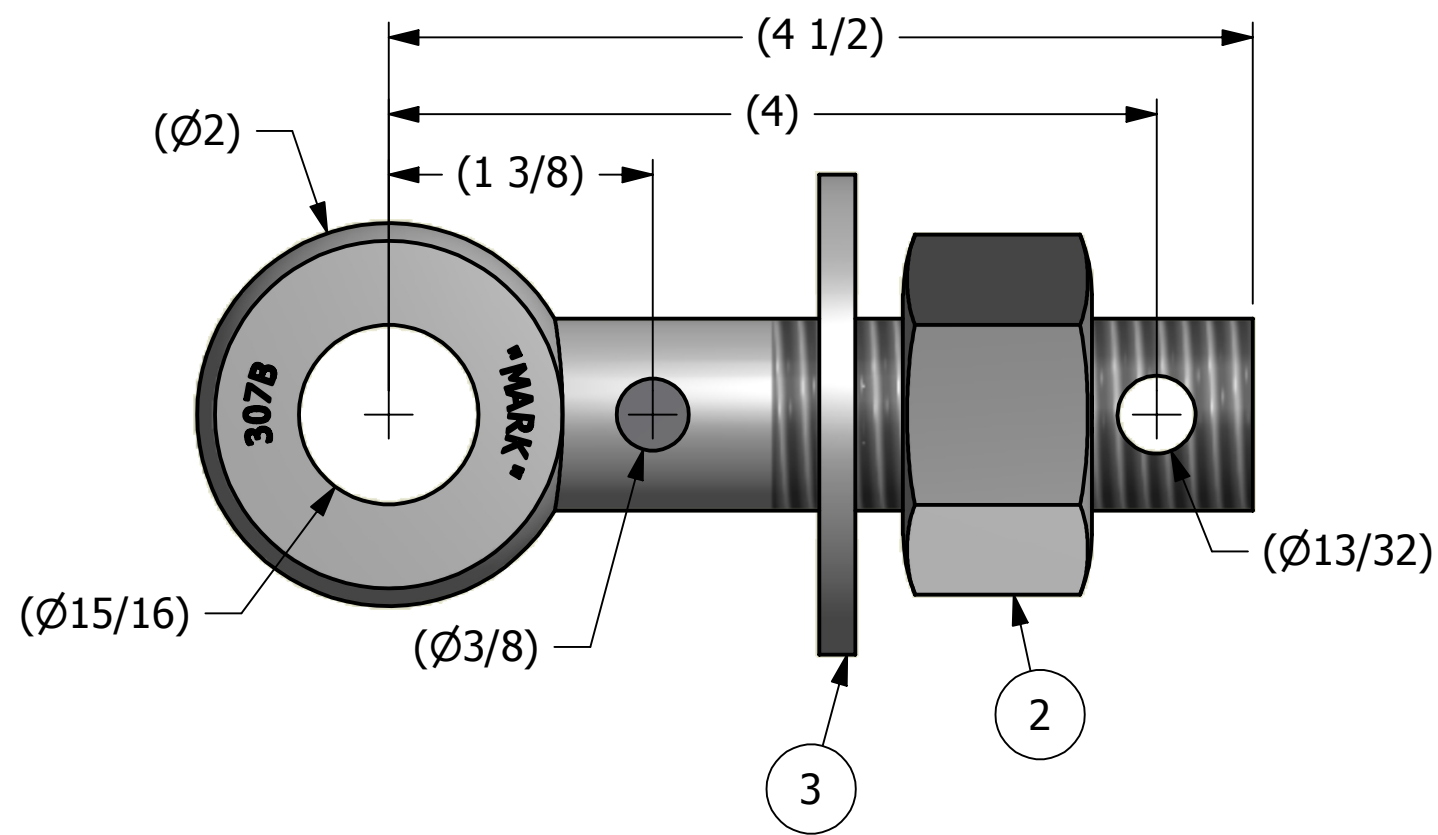


NO.	PART NAME	PART#	REQ'D	MATERIAL
1	EYEBOLT 1"X4 1/2"	EBR145HP	1	CARBON STEEL
2	HEAVY HEX NUT 1"-8	N1X	1	CARBON STEEL
3	FLAT WASHER 1"	WASH1P	1	CARBON STEEL
4	PIN 3/8"X2 1/2"	PIN375	1	CARBON STEEL



ISOMETRIC VIEW



UNLESS OTHERWISE SPECIFIED DIMENSIONAL TOLERANCES	
FRACTIONAL:	±1/16
X.XX:	±.03
X.XXX:	±.015
ANGULAR:	±1°
THIS PRINT, PROPERTY OF SALCO PRODUCTS INC., CONTAINS PROPRIETARY INFORMATION AND MUST NOT BE COPIED, REPRODUCED, OR USED DETRIMENTALLY TO OUR INTEREST.	
THIRD ANGLE PROJECTION	

DRAWN BY:	CHL
CHECKED BY:	SAB
PROTOTYPE BY:	CHL
PROTOTYPE DATE:	4/24/2001
APPROVED FOR PRODUCTION BY:	SAB
PRODUCTION DATE:	4/24/2001

A	CHL	4-7-09	CHANGED EYEBOLT MATERIAL
REV	BY	DATE	DESCRIPTION
<b>SALCO PRODUCTS, INC.</b>			
PART NAME: EYEBOLT ASSEMBLY 1"X5"			
MATERIAL: SEE BOM			
PROJECT #:	SHEET #: 1 OF 1	SCALE: 1:1	
DRAWING #:	PART #:		
<b>B15695</b>	<b>EB145XHAP</b>		