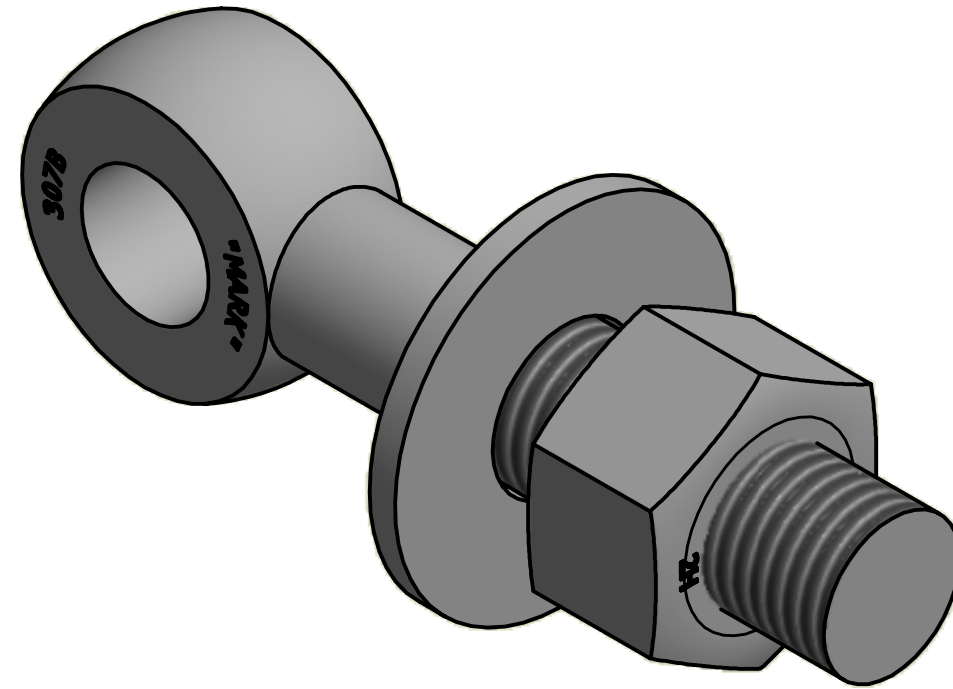
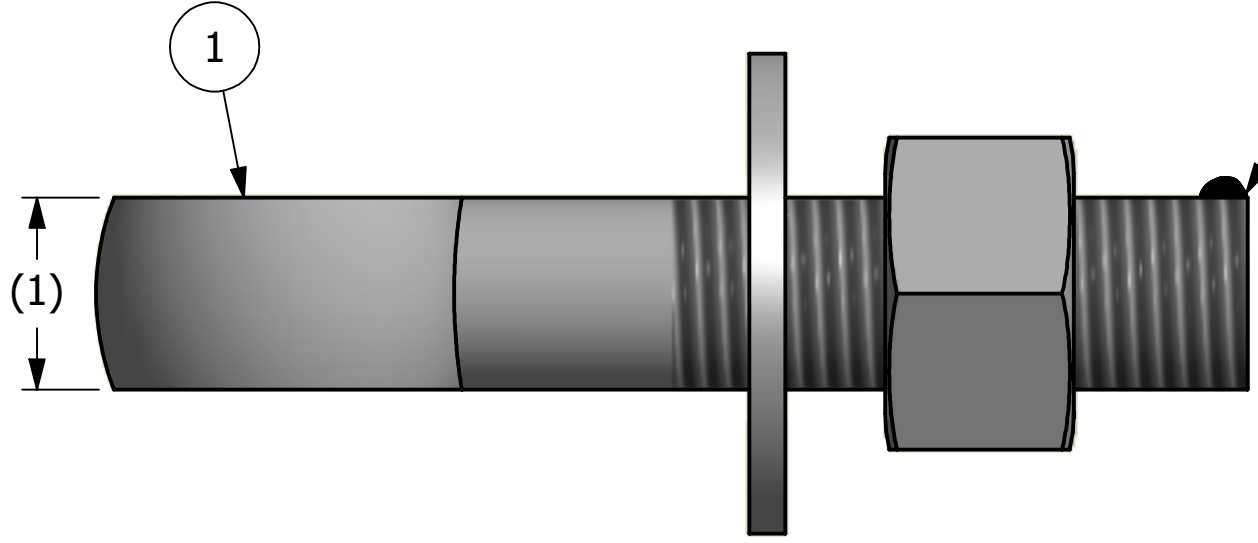
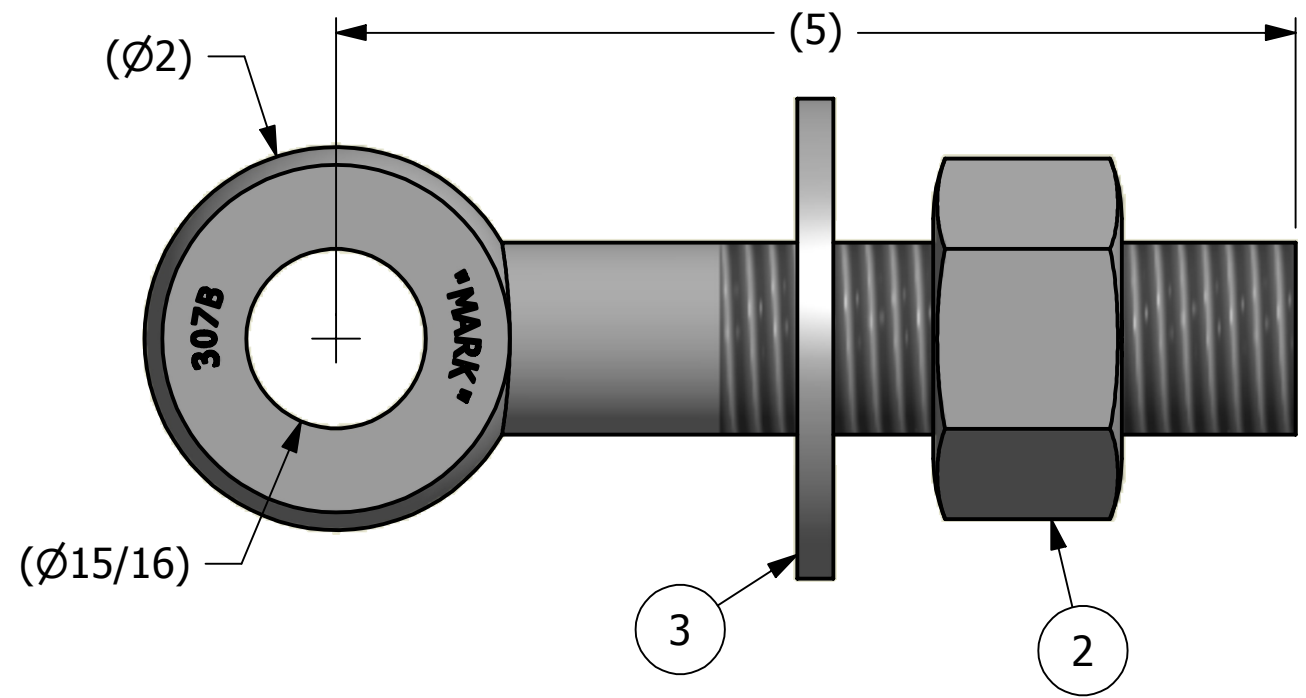


NO.	PART NAME	PART#	REQ'D	MATERIAL
1	EYEBOLT 1"X5"	EBR15	1	CARBON STEEL
2	HEAVY HEX NUT 1"-8	N1X	1	CARBON STEEL
3	FLAT WASHER 1"	WASH1P	1	CARBON STEEL



ISOMETRIC VIEW



NOTE:
 APPLY JET LUBE(PFPE GREASE) TO WORKING THREAD AREA,
 THE BOTTOM FACE OF THE NUT AND THE TOP FACE OF THE
 WASHER.

REV	BY	DATE	DESCRIPTION
B	CHL	8-21-13	CHANGED EYEBOLT MATERIAL
A	BRG	3-5-08	ADDED PART INTO SYSTEM

UNLESS OTHERWISE SPECIFIED DIMENSIONAL TOLERANCES		DRAWN BY:	CHL
FRACTIONAL:	±1/16	CHECKED BY:	ACC
X.XX:	±.03	PROTOTYPE BY:	CHL
X.XXX:	±.015	PROTOTYPE DATE:	1/2/2007
ANGULAR:	±1°	APPROVED FOR PRODUCTION BY:	ACC
THIS PRINT, PROPERTY OF SALCO PRODUCTS INC., CONTAINS PROPRIETARY INFORMATION AND MUST NOT BE COPIED, REPRODUCED, OR USED DETRIMENTALLY TO OUR INTEREST.		PRODUCTION DATE:	1/2/2007
THIRD ANGLE PROJECTION			

PART NAME: EYEBOLT ASSEMBLY 1"X5"			
MATERIAL: SEE BOM			
PROJECT #:	WAG0383	SHEET #:	1 OF 1
DRAWING #:		PART #:	
B22978		EB15XAL	
SCALE:		1:1	