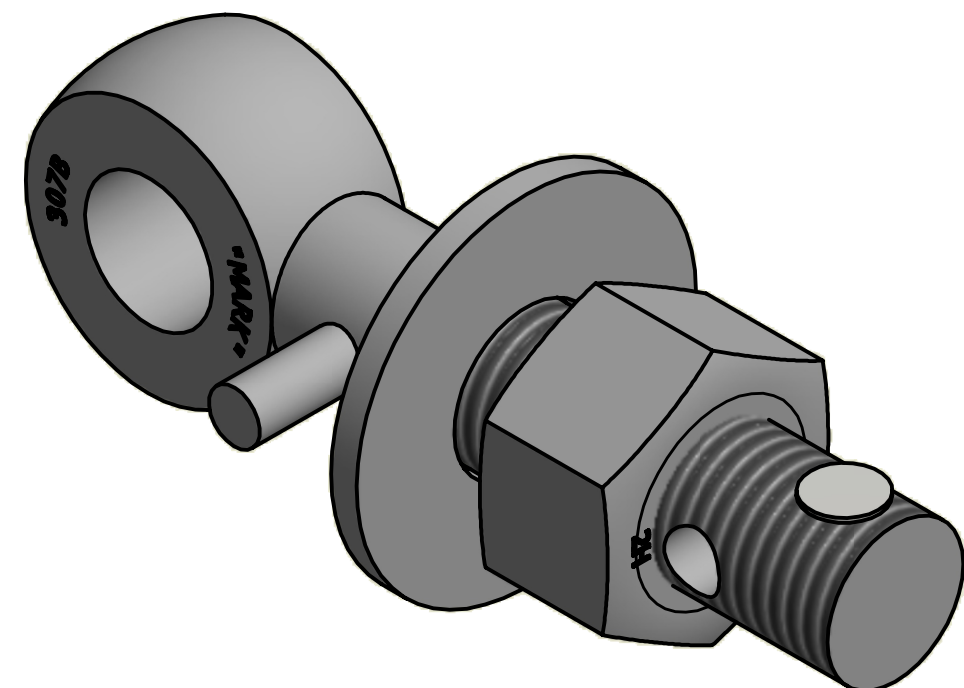


NO.	PART NAME	PART#	REQ'D	MATERIAL
1	EYEBOLT 1"X5"	EBR15HPR	1	CARBON STEEL
2	FLAT WASHER 1"	WASH1P	1	CARBON STEEL
3	HEAVY HEX NUT 1"-8	N1X	1	CARBON STEEL
4	HUCK RIVET 1/4"X13/16"	A16204	1	304 SS
5	PIN 3/8"X2 1/2"	PIN375	1	CARBON STEEL



ISOMETRIC VIEW

A	CHL	9-17-10	NEW PART ADDED TO NETWORK
REV	BY	DATE	DESCRIPTION

UNLESS OTHERWISE SPECIFIED DIMENSIONAL TOLERANCES	DRAWN BY:	VD
FRACTIONAL: ±1/16	CHECKED BY:	CHL
X.XX: ±.03	PROTOTYPE BY:	VD
X.XXX: ±.015	PROTOTYPE DATE:	1/11/2010
ANGULAR: ±1°	APPROVED FOR PRODUCTION BY:	CHL
THIS PRINT, PROPERTY OF SALCO PRODUCTS INC., CONTAINS PROPRIETARY INFORMATION AND MUST NOT BE COPIED, REPRODUCED, OR USED DETRIMENTALLY TO OUR INTEREST.	PRODUCTION DATE:	9/17/2010
THIRD ANGLE PROJECTION		

SALCO PRODUCTS, INC.

PART NAME:
EYEBOLT ASSEMBLY 1"X5" WITH RIVET

MATERIAL: **SEE BOM**

PROJECT #: **WAG0759** SHEET #: **1 OF 1** SCALE: **1:1**

DRAWING #: **B27953** PART #: **EB15XHA2P**

