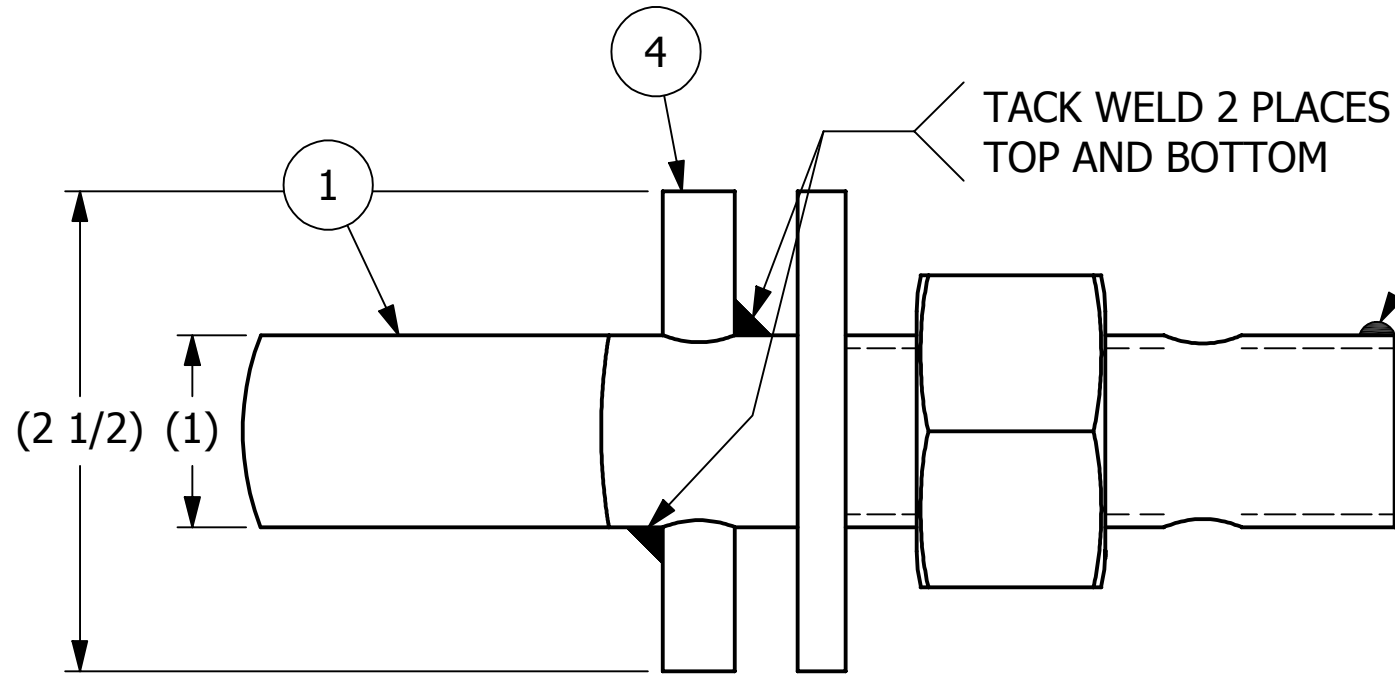
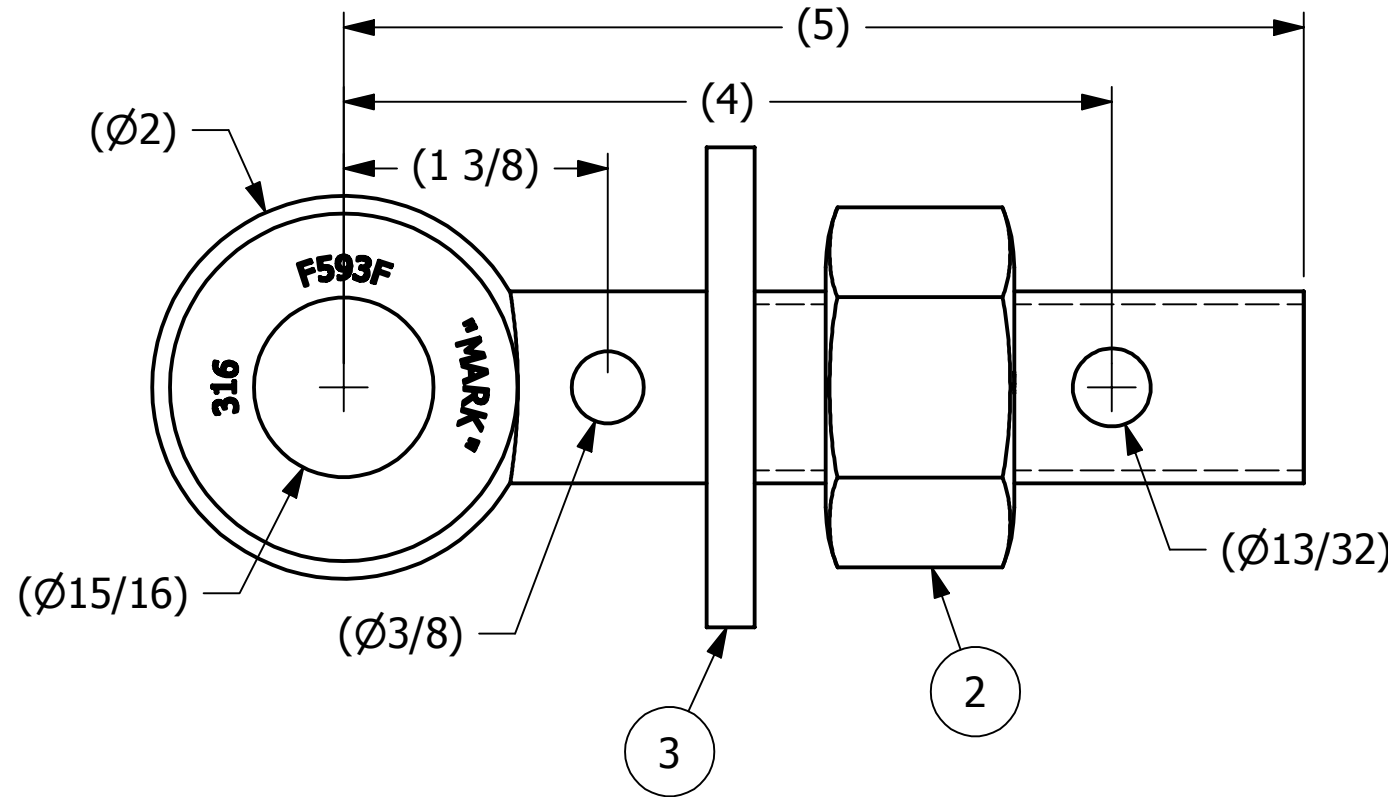
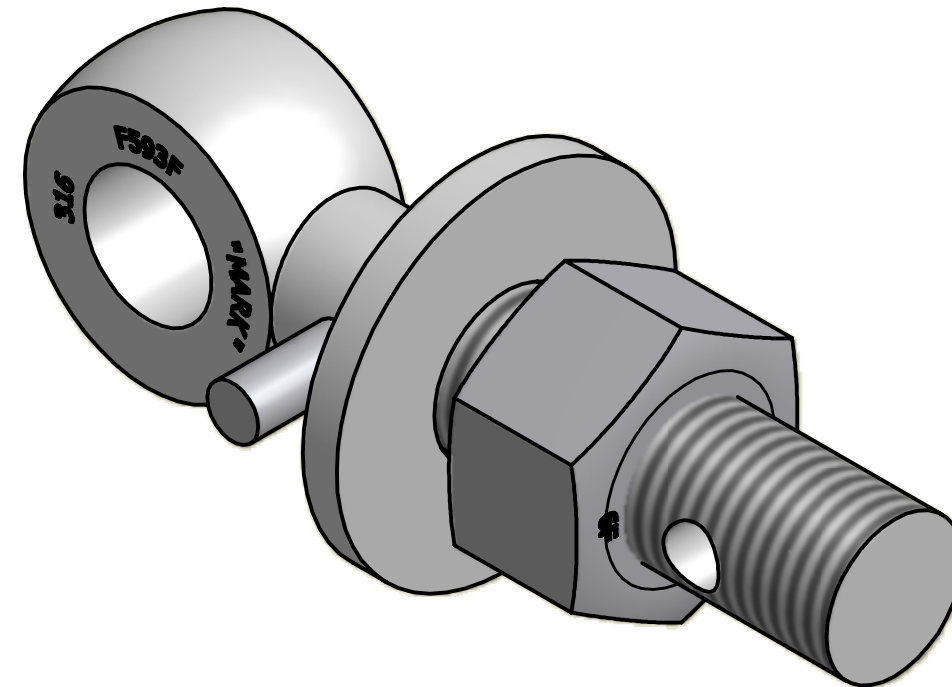


NO.	PART NAME	PART#	REQ'D	MATERIAL
1	EYEBOLT 1"X5"	EBR15HS6P	1	316SS
2	HEAVY HEX NUT 1"-8	N1XS6	1	416 SS
3	FLAT WASHER 1"	WASH1S6T	1	316 SS
4	PIN 3/8"X2 1/2"	PIN375SS	1	316 SS



APPLY A BEAD OF WELD TO THE TWO END THREADS AFTER INSTALLING WASHER AND NUT



A	CHL	4-13-07	NEW PART ADDED TO SYSTEM
REV	BY	DATE	DESCRIPTION

UNLESS OTHERWISE SPECIFIED DIMENSIONAL TOLERANCES		DRAWN BY:	CHL
FRACTIONAL:	±1/16	CHECKED BY:	ACC
X.XX:	±.03	PROTOTYPE BY:	CHL
X.XXX:	±.015	PROTOTYPE DATE:	1/29/2007
ANGULAR:	±1°	APPROVED FOR PRODUCTION BY:	ACC
THIS PRINT, PROPERTY OF SALCO PRODUCTS INC., CONTAINS PROPRIETARY INFORMATION AND MUST NOT BE COPIED, REPRODUCED, OR USED DETRIMENTALLY TO OUR INTEREST.		PRODUCTION DATE:	4/13/2007
THIRD ANGLE PROJECTION			

PART NAME: EYEBOLT ASSEMBLY 1"X5"		
MATERIAL: SEE BOM		
PROJECT #: WAG0389	SHEET #: 1 OF 1	SCALE: 1:1
DRAWING #: B23075	PART #: EB15XHA2S6P	