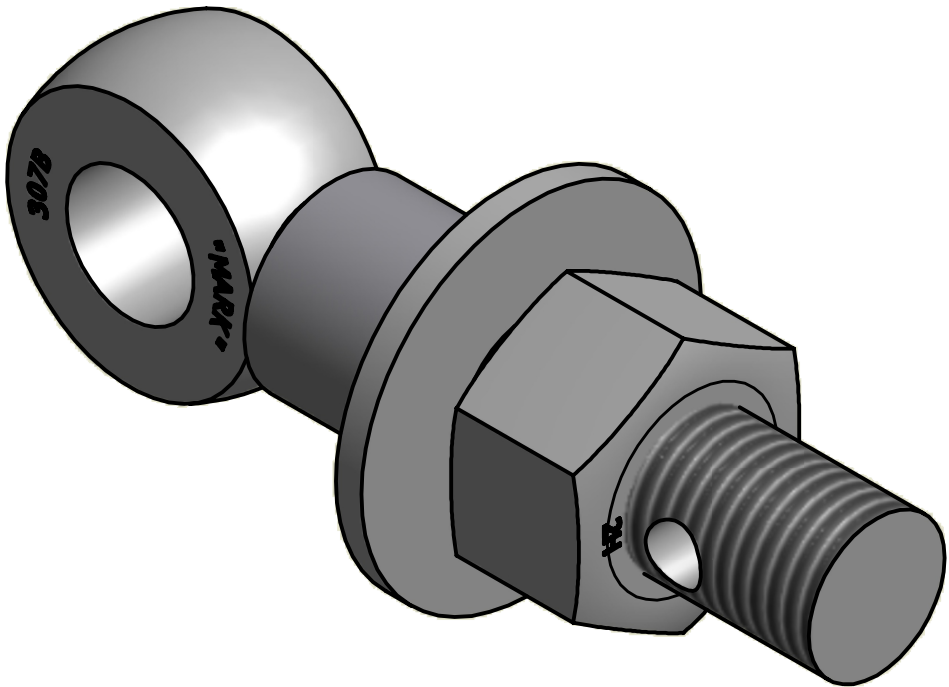
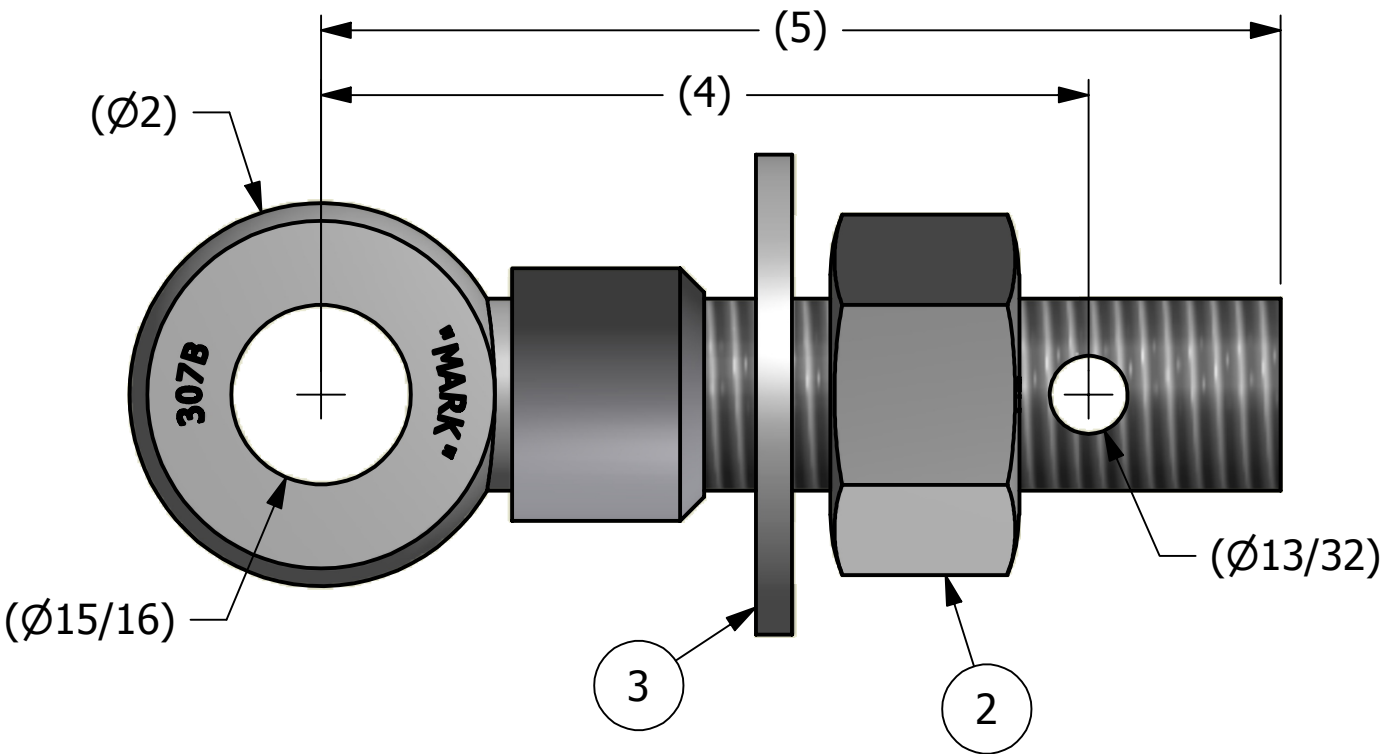
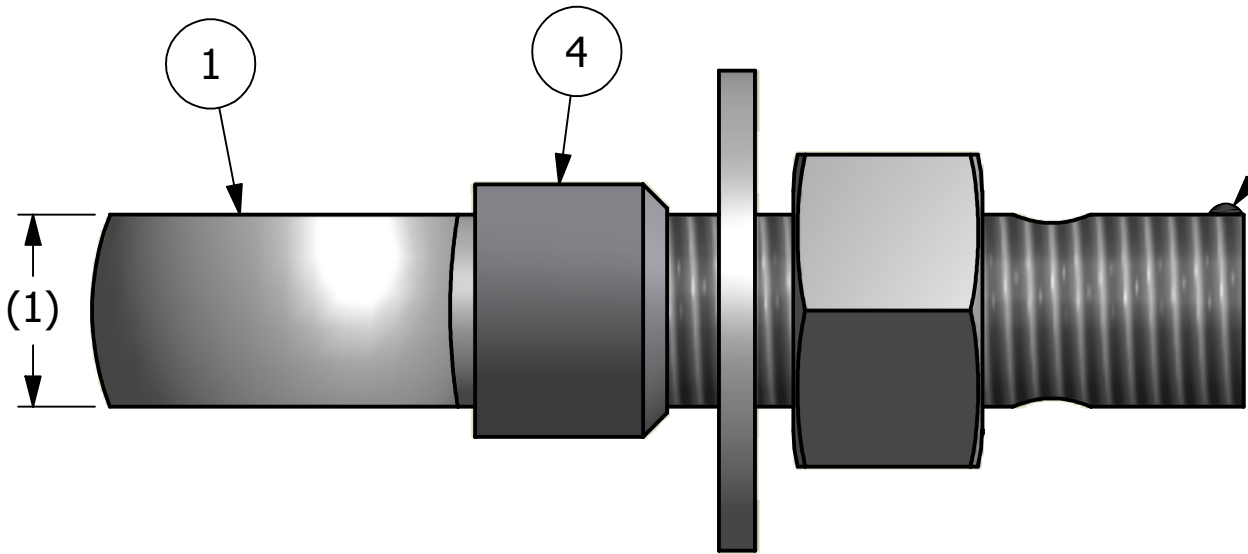


NO.	PART NAME	PART#	1	
			REQ'D	MATERIAL
			1	CARBON STEEL
			1	CARBON STEEL
			1	CARBON STEEL
1	EYEBOLT 1"X5"	EBR15H	1	CARBON STEEL
2	HEAVY HEX NUT 1"-8	N1X	1	CARBON STEEL
3	FLAT WASHER 1"	WASH1P	1	CARBON STEEL
4	EYEBOLT SAFETY COLLAR 1"	COLLAR13S4	1	304 SS



ISOMETRIC VIEW

NOTE:
APPLY JET LUBE(PFPE GREASE) TO WORKING THREAD AREA,
THE BOTTOM FACE OF THE NUT AND THE TOP FACE OF THE
WASHER.

UNLESS OTHERWISE SPECIFIED DIMENSIONAL TOLERANCES FRACTIONAL: ±1/16 X.XX: ±.03 X.XXX: ±.015 ANGULAR: ±1° <small>THIS PRINT, PROPERTY OF SALCO PRODUCTS INC., CONTAINS PROPRIETARY INFORMATION AND MUST NOT BE COPIED, REPRODUCED, OR USED DETRIMENTALLY TO OUR INTEREST.</small> THIRD ANGLE PROJECTION	DRAWN BY:	CHL
	CHECKED BY:	PJG
	PROTOTYPE BY:	CHL
	PROTOTYPE DATE:	9/1/2009
	APPROVED FOR PRODUCTION BY:	PJG
	PRODUCTION DATE:	10/26/2009

A	CHL	10-26-09	NEW PART ADDED TO SYSTEM	
REV	BY	DATE	DESCRIPTION	
<div><div></div><div>SALCO PRODUCTS, INC.</div></div>				
PART NAME: EYEBOLT ASSEMBLY 1"X5"				
MATERIAL: SEE BOM				
PROJECT #:		SHEET #:		SCALE:
WAG0722		1 OF 1		1:1
DRAWING #:		PART #:		
B27433		EB15XHACL		