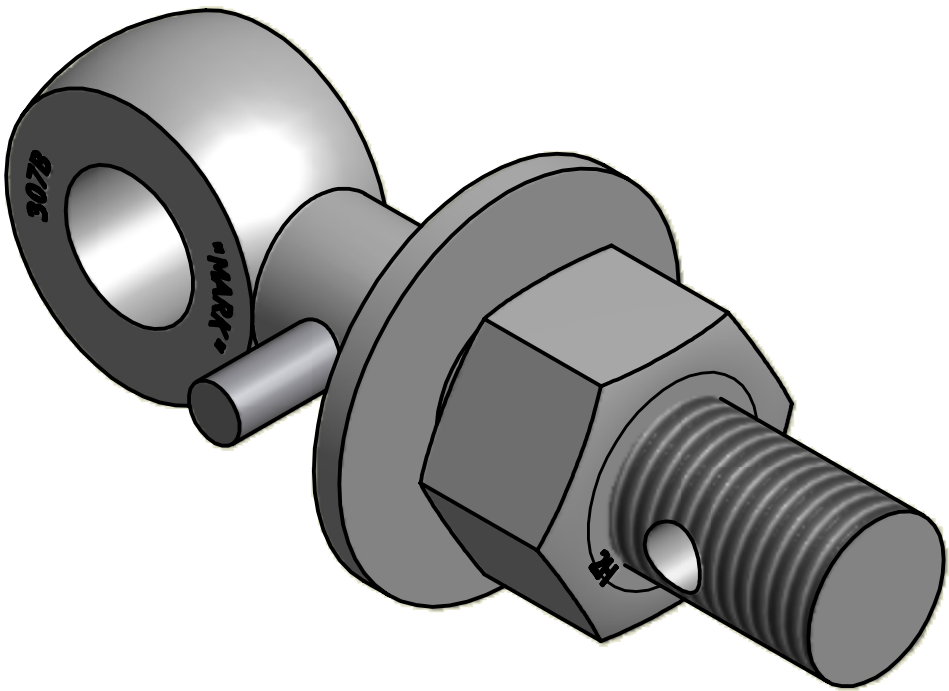


NO.	PART NAME	PART#	REQ'D	MATERIAL
1	EYEBOLT 1"X5"	EBR15HP	1	CARBON STEEL
2	HEAVY HEX NUT 1"-8	N1X	1	CARBON STEEL
3	FLAT WASHER 1"	WASH1P	1	CARBON STEEL
4	PIN 3/8"X2 1/2"	PIN375	1	CARBON STEEL



NOTE:
APPLY JET LUBE(PFPE GREASE) TO WORKING THREAD AREA,
THE BOTTOM FACE OF THE NUT AND THE TOP FACE OF THE
WASHER.

B	CHL	4-7-09	CHANGED EYEBOLT MATERIAL
A	BRG	3-5-08	ADDED PART INTO SYSTEM
REV	BY	DATE	DESCRIPTION
PART NAME: EYEBOLT ASSEMBLY 1"X5"			
MATERIAL: SEE BOM			
PROJECT #: WAG0383		SHEET #: 1 OF 1	SCALE: 1:1
DRAWING #: B22972		PART #: EB15XHAPL	

UNLESS OTHERWISE SPECIFIED DIMENSIONAL TOLERANCES FRACTIONAL: ±1/16 X.XX: ±.03 X.XXX: ±.015 ANGULAR: ±1° <small>THIS PRINT, PROPERTY OF SALCO PRODUCTS INC., CONTAINS PROPRIETARY INFORMATION AND MUST NOT BE COPIED, REPRODUCED, OR USED DETRIMENTALLY TO OUR INTEREST.</small> THIRD ANGLE PROJECTION	DRAWN BY:	CHL
	CHECKED BY:	ACC
	PROTOTYPE BY:	CHL
	PROTOTYPE DATE:	1/2/2007
	APPROVED FOR PRODUCTION BY:	ACC
PRODUCTION DATE:		1/2/2007