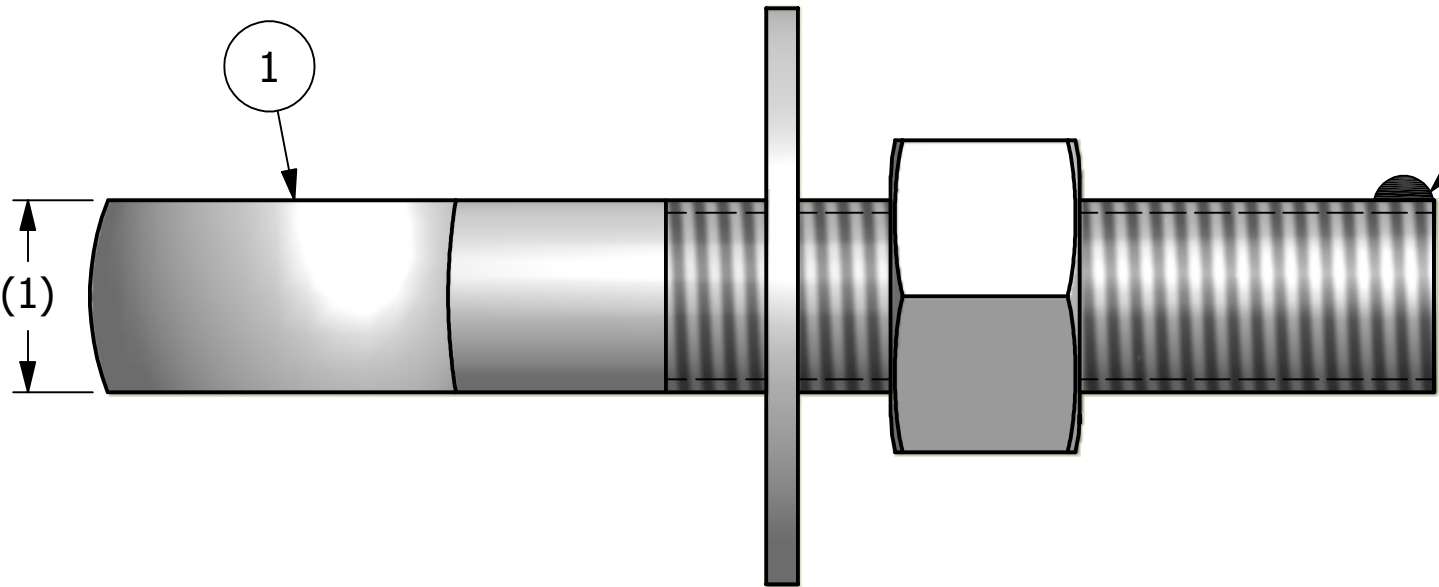
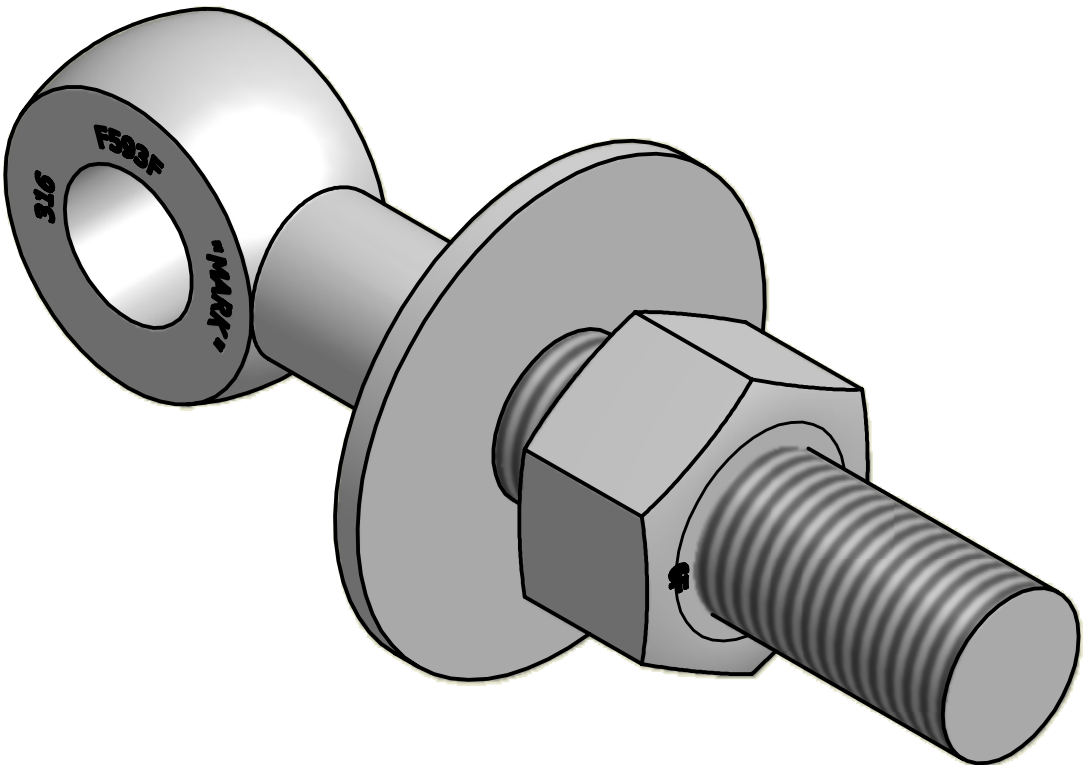


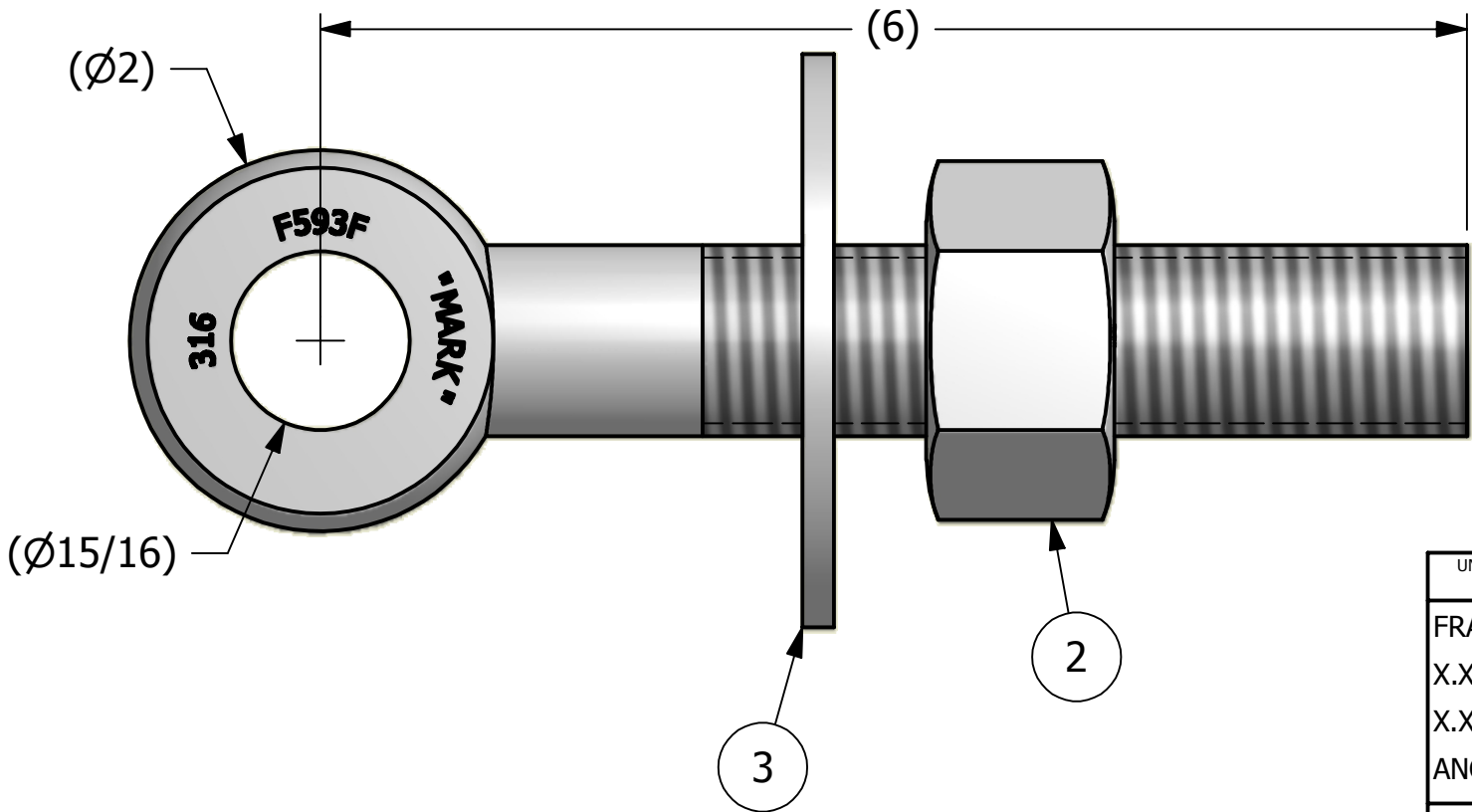
NO.	PART NAME	PART#	REQ'D	MATERIAL
1	EYEBOLT 1"X6"	EBR16S6	1	316SS
2	HEAVY HEX NUT 1"-8	N1XS6	1	416 SS
3	FLAT WASHER 1"	WASH13S4	1	304 SS




APPLY A BEAD OF WELD TO THE TWO END  
THREADS AFTER INSTALLING WASHER AND NUT.



ISOMETRIC VIEW



UNLESS OTHERWISE SPECIFIED DIMENSIONAL TOLERANCES	DRAWN BY:	CHL
FRACTIONAL: $\pm 1/16$	CHECKED BY:	ACC
X.XX: $\pm .03$	PROTOTYPE BY:	CHL
X.XXX: $\pm .015$	PROTOTYPE DATE:	2/24/2006
ANGULAR: $\pm 1^\circ$	APPROVED FOR PRODUCTION BY:	ACC
THIS PRINT, PROPERTY OF SALCO PRODUCTS INC., CONTAINS PROPRIETARY INFORMATION AND MUST NOT BE COPIED, REPRODUCED, OR USED DETRIMENTALLY TO OUR INTEREST.	PRODUCTION DATE:	6/1/2007
THIRD ANGLE PROJECTION		

A	CHL	6-1-07	NEW PART ADDED TO SYSTEM
REV	BY	DATE	DESCRIPTION
 <b>SALCO PRODUCTS, INC.</b>			
PART NAME: <b>EYEBOLT ASSEMBLY 1"X6"</b>			
MATERIAL: <b>SEE BOM</b>			
PROJECT #: <b>WAG0303</b>		SHEET #: <b>1 OF 1</b>	SCALE: <b>1:1</b>
DRAWING #: <b>B21612</b>		PART #: <b>EB16XAS6</b>	