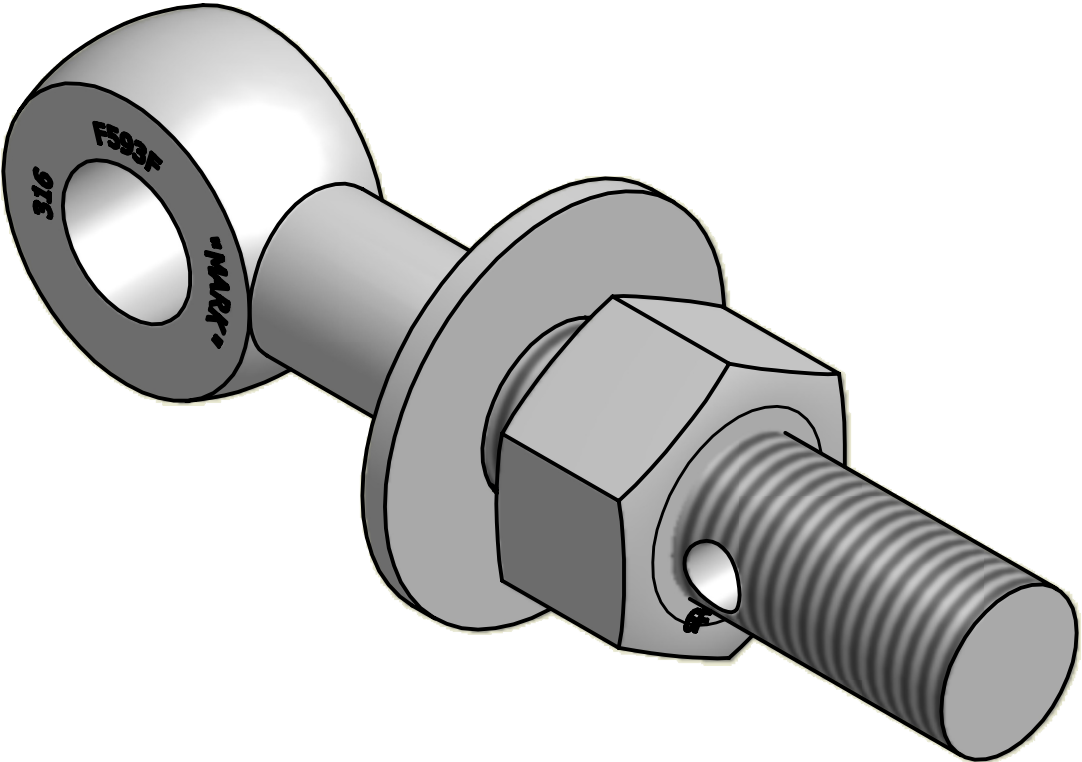


NO.	PART NAME	PART#	REQ'D	MATERIAL
1	EYEBOLT 1"X6"	EBR16HS6	1	316SS
2	HEAVY HEX NUT 1"-8	N1XS6	1	416 SS
3	FLAT WASHER 1" USS	WASH1S6	1	316 SS

APPLY A BEAD OF WELD TO THE TWO END
THREADS AFTER INSTALLING WASHER AND NUT.



ISOMETRIC VIEW

UNLESS OTHERWISE SPECIFIED DIMENSIONAL TOLERANCES FRACTIONAL: $\pm 1/16$ X.XX: $\pm .03$ X.XXX: $\pm .015$ ANGULAR: $\pm 1^\circ$ DEBURR ALL SHARP EDGES. ALL MACHINED SURFACES TO HAVE A 125 RMS FINISH UNLESS NOTED OTHERWISE. THIRD ANGLE PROJECTION	DRAWN BY:	FOD
	CHECKED BY:	SAB
	PROTOTYPE BY:	FOD
	PROTOTYPE DATE:	5/12/1999
	APPROVED FOR PRODUCTION BY:	SAB
	PRODUCTION DATE:	5/12/1999

A	CHL	10-25-10	REPLACED WASH1S4 W/WASH1S6
REV	BY	DATE	DESCRIPTION
 SALCO PRODUCTS, INC.			
PART NAME: EYEBOLT ASSEMBLY 1"X6"			
MATERIAL: SEE BOM			
PROJECT #:		SHEET #: 1 OF 1	SCALE: 1:1
DRAWING #:		PART #:	
B13429		EB16XHAS6	

THIS PRINT, PROPERTY OF SALCO PRODUCTS INC., CONTAINS PROPRIETARY INFORMATION
AND MUST NOT BE COPIED, REPRODUCED, OR USED DETRIMENTALLY TO OUR INTEREST.