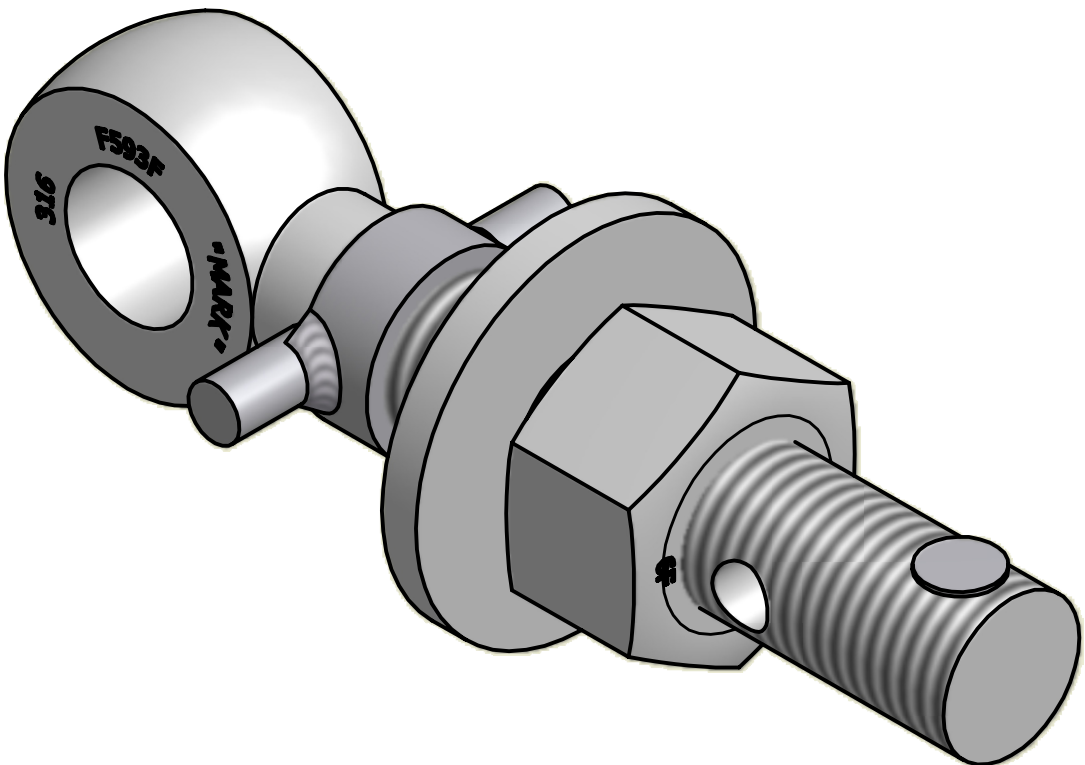



NO.	PART NAME	PART#	REQ'D	MATERIAL
1	EYEBOLT 1"X6"	EBR16HFTS6R	1	316SS
2	HEAVY HEX NUT 1"-8	N1XS6	1	416 SS
3	FLAT WASHER 1"	WASH1S6T	1	316 SS
4	COLLAR 1"	COLLAR1S4TP	1	304 SS
5	HUCK RIVET 1/4"X13/16"	A16204	1	304 SS



ISOMETRIC VIEW

UNLESS OTHERWISE SPECIFIED DIMENSIONAL TOLERANCES FRACTIONAL: $\pm 1/16$ X.XX: $\pm .03$ X.XXX: $\pm .015$ ANGULAR: $\pm 1^\circ$ DEBURR ALL SHARP EDGES. ALL MACHINED SURFACES TO HAVE A 125 RMS FINISH UNLESS NOTED OTHERWISE. THIRD ANGLE PROJECTION	DRAWN BY:	CHL
	CHECKED BY:	VD
	PROTOTYPE BY:	CHL
	PROTOTYPE DATE:	4/27/2010
	APPROVED FOR PRODUCTION BY:	VD
	PRODUCTION DATE:	6/30/2010

A	CHL	6-30-10	NEW PART ADDED TO SYSTEM
REV	BY	DATE	DESCRIPTION
 SALCO PRODUCTS, INC.			
PART NAME: EYEBOLT ASSEMBLY 1"X6"			
MATERIAL: SEE BOM			
PROJECT #: 100427		SHEET #: 1 OF 1	SCALE: 1:1
DRAWING #: B28595		PART #: EB16XHAS6TCP	