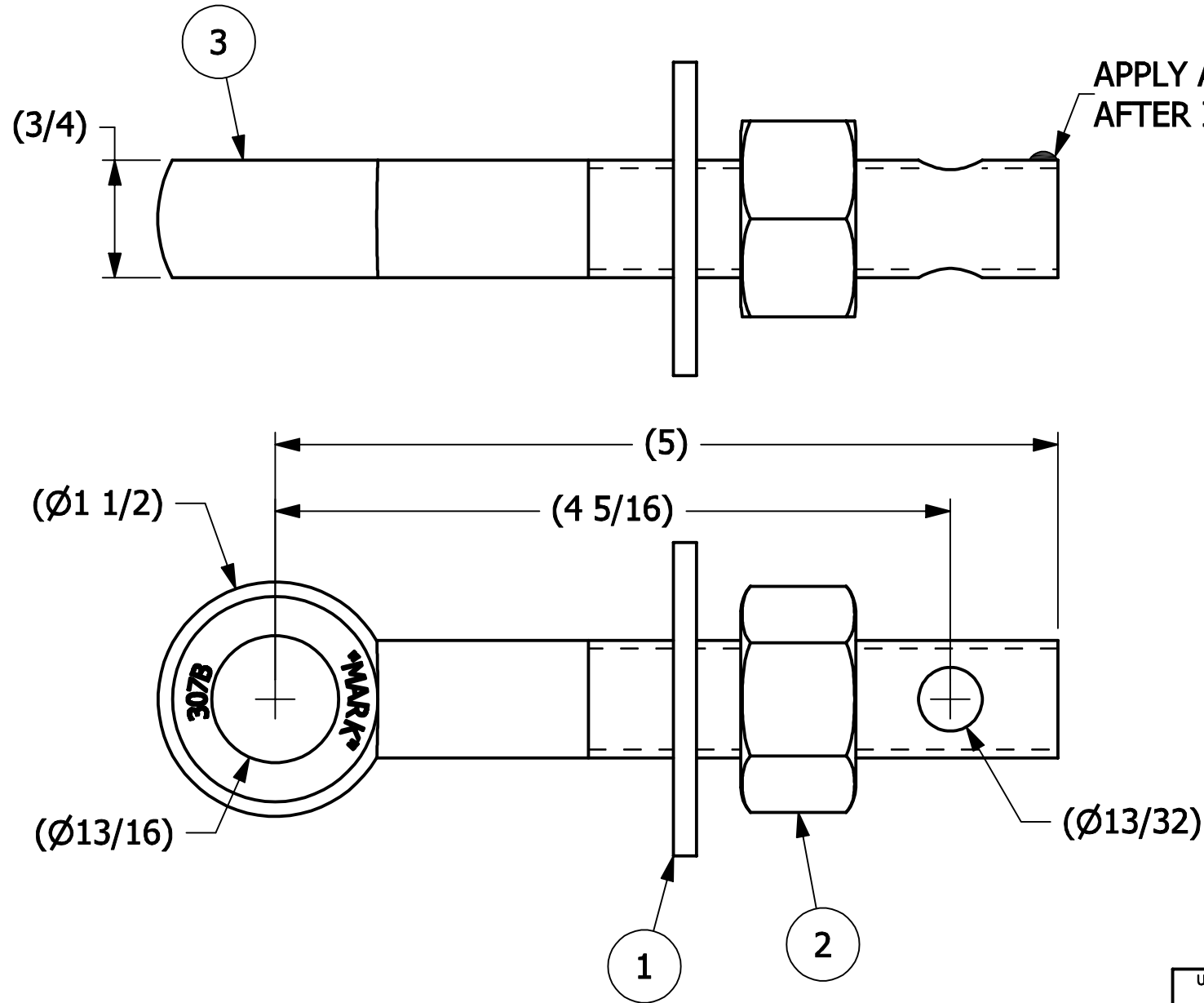
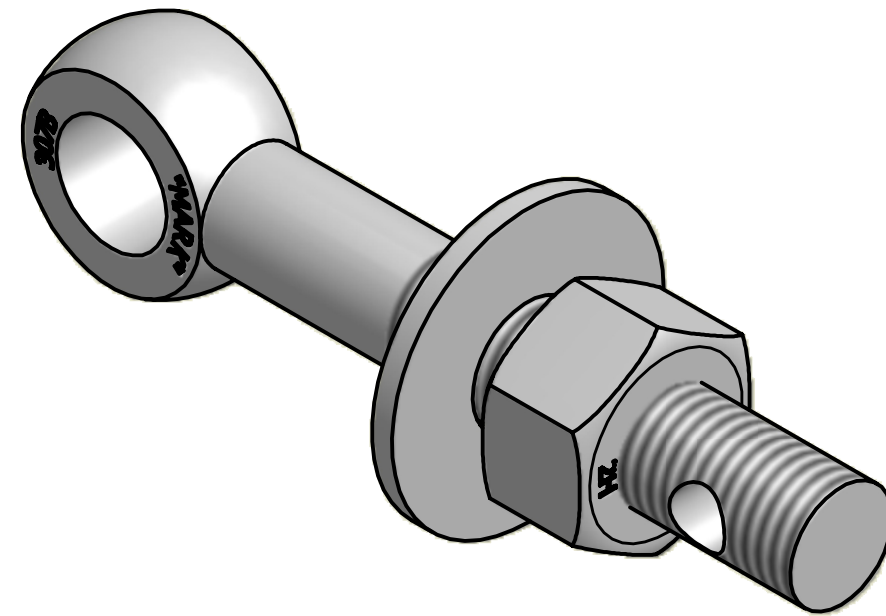


NO.	PART NAME	PART#	REQ'D	MATERIAL
1	FLAT WASHER 3/4" USS	WASH34	1	CARBON STEEL
2	HEAVY HEX NUT 3/4"-10	N34X	1	CARBON STEEL
3	EYEBOLT 3/4"X6"	EBR345H	1	CARBON STEEL



APPLY A BEAD OF WELD TO THE TWO END THREADS AFTER INSTALLING WASHER AND NUT.



A	CHL	6-12-09	NEW PART ADDED TO SYSTEM
REV	BY	DATE	DESCRIPTION
SALCO PRODUCTS, INC.			
PART NAME: EYEBOLT ASSEMBLY 3/4"X5"			
MATERIAL: SEE BOM			
PROJECT #: WAG0290		SHEET #: 1 OF 1	SCALE: 1:1
DRAWING #: B21336		PART #: EB345XHA	

UNLESS OTHERWISE SPECIFIED DIMENSIONAL TOLERANCES	DRAWN BY:	CHL
FRACTIONAL: ±1/16	CHECKED BY:	ACC
X.XX: ±.03	PROTOTYPE BY:	CHL
X.XXX: ±.015	PROTOTYPE DATE:	12/12/2005
ANGULAR: ±1°	APPROVED FOR PRODUCTION BY:	ACC
THIS PRINT, PROPERTY OF SALCO PRODUCTS INC., CONTAINS PROPRIETARY INFORMATION AND MUST NOT BE COPIED, REPRODUCED, OR USED DETRIMENTALLY TO OUR INTEREST.	PRODUCTION DATE:	6/12/2009
THIRD ANGLE PROJECTION		