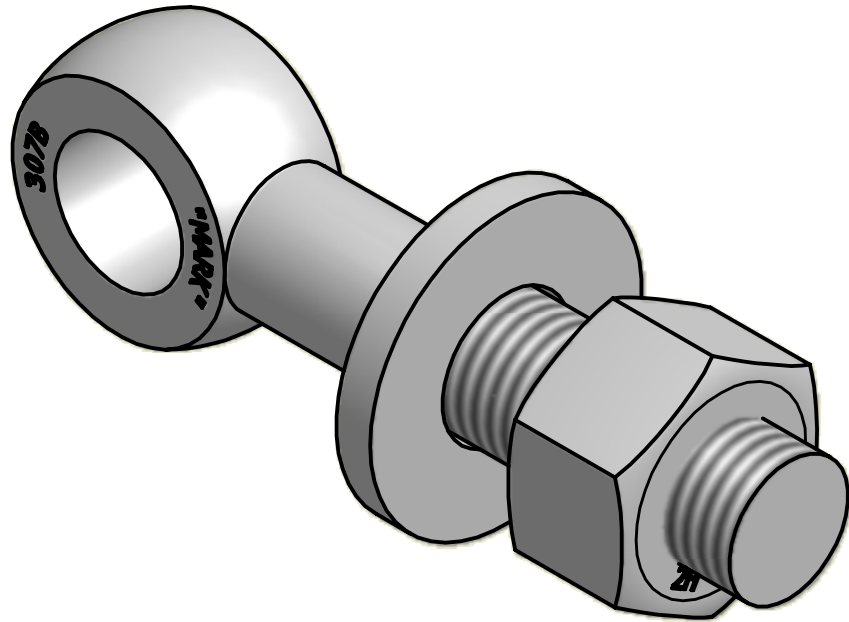
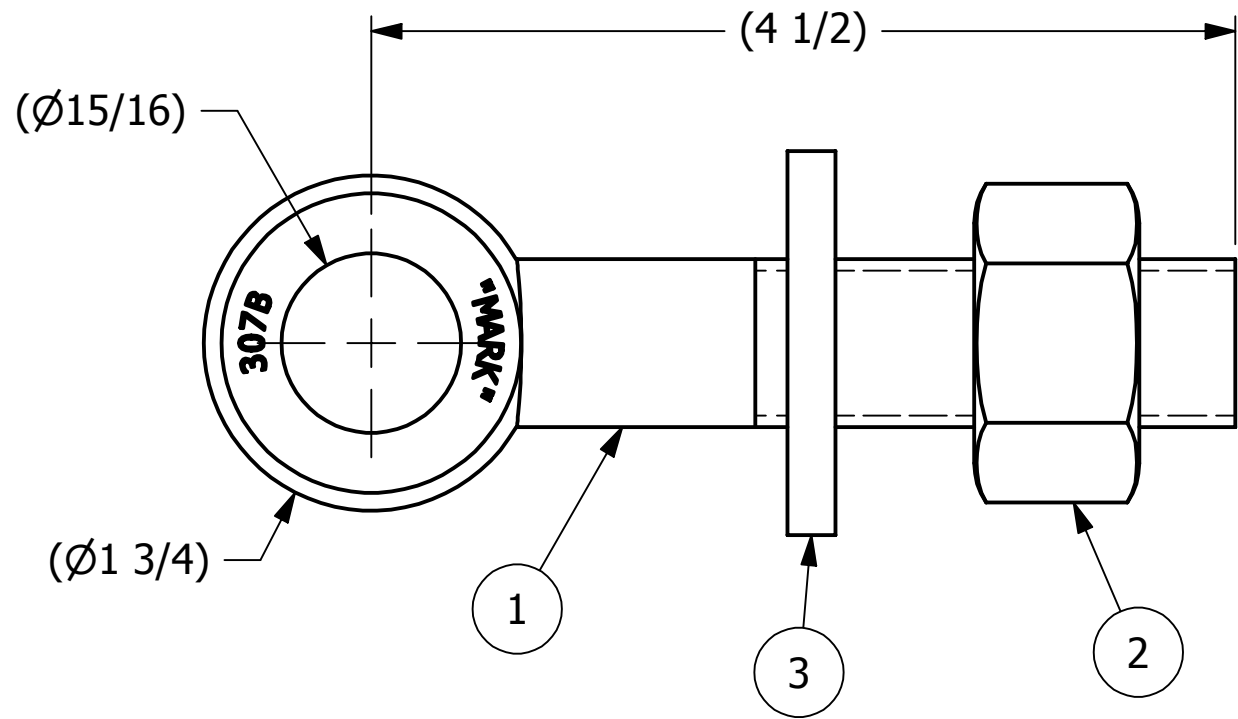
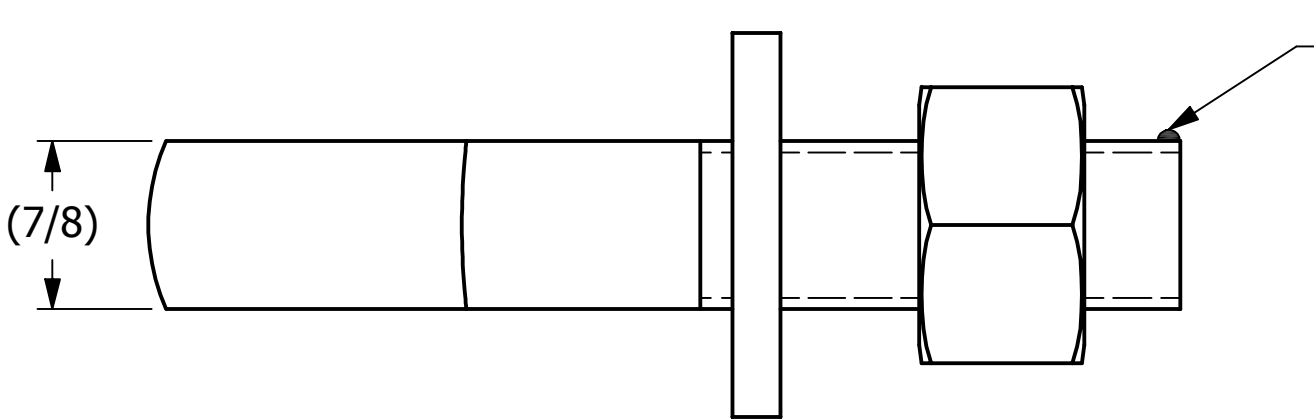


NO.	PART NAME	PART #	REQ'D	MATERIAL
1	EYEBOLT 7/8"X4 1/2"	EBR7845	1	CARBON STEEL
2	HEAVY HEX NUT 7/8"-9	N78X	1	CARBON STEEL
3	FLAT WASHER 7/8"	WASH78T	1	CARBON STEEL



ISOMETRIC VIEW

B	CHL	6-10-02	CHANGED MATERIAL OF WASH78T UPDATED DRAWING
A	FOD	8-5-99	UPDATED BOM, ITEM #1 WAS EB7845
REV	BY	DATE	DESCRIPTION
<div><div></div><div>SALCO PRODUCTS, INC.</div></div>			
PART NAME: EYEBOLT ASSEMBLY 7/8"X4 1/2"			
MATERIAL: SEE BOM			
PROJECT #:		SHEET #: 1 OF 1	SCALE: 1:1
DRAWING #: B13459		PART #: EB7845XA	

UNLESS OTHERWISE SPECIFIED DIMENSIONAL TOLERANCES FRACTIONAL: ±1/16 X.XX: ±.03 X.XXX: ±.015 ANGULAR: ±1° DEBURR ALL SHARP EDGES. ALL MACHINED SURFACES TO HAVE A 125 RMS FINISH UNLESS NOTED OTHERWISE. THIRD ANGLE PROJECTION	DRAWN BY:	FOD
	CHECKED BY:	SAB
	PROTOTYPE BY:	FOD
	PROTOTYPE DATE:	5/21/1999
	APPROVED FOR PRODUCTION BY:	SAB
	PRODUCTION DATE:	5/21/1999

THIS PRINT, PROPERTY OF SALCO PRODUCTS INC., CONTAINS PROPRIETARY INFORMATION AND MUST NOT BE COPIED, REPRODUCED, OR USED DETRIMENTALLY TO OUR INTEREST.