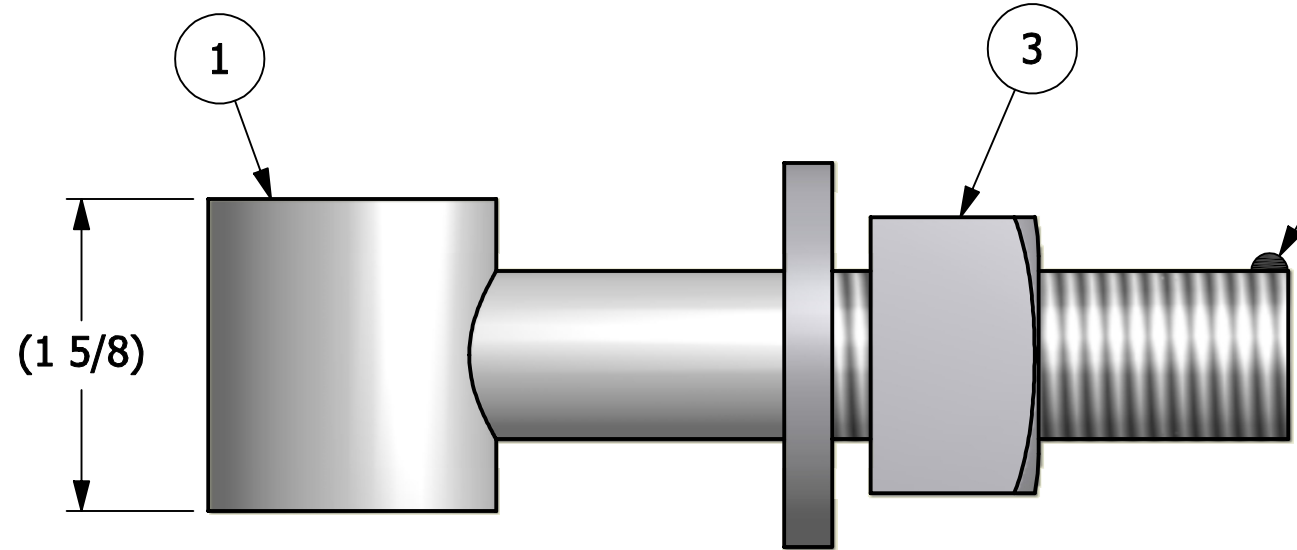
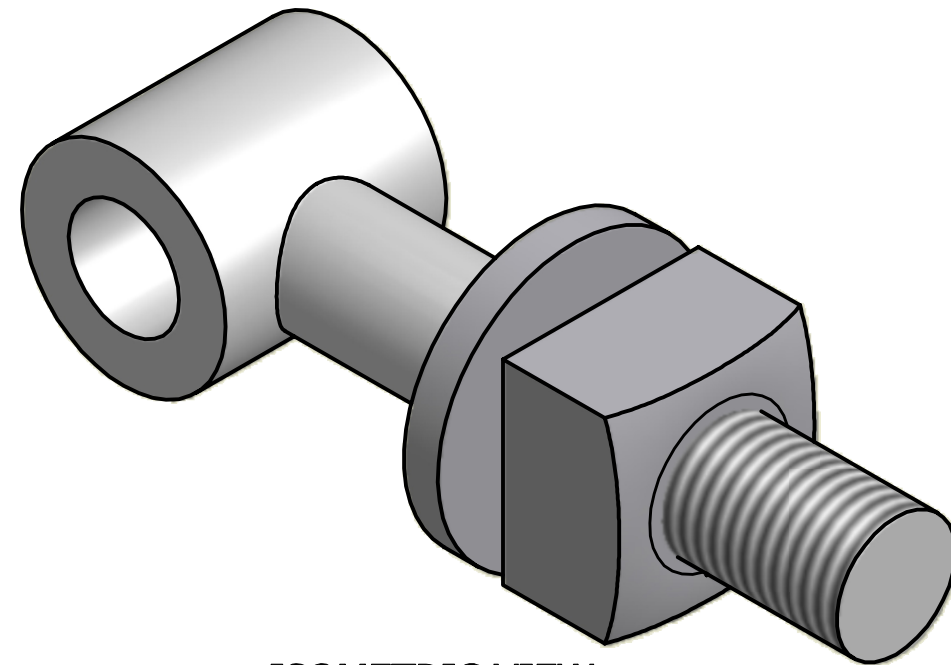


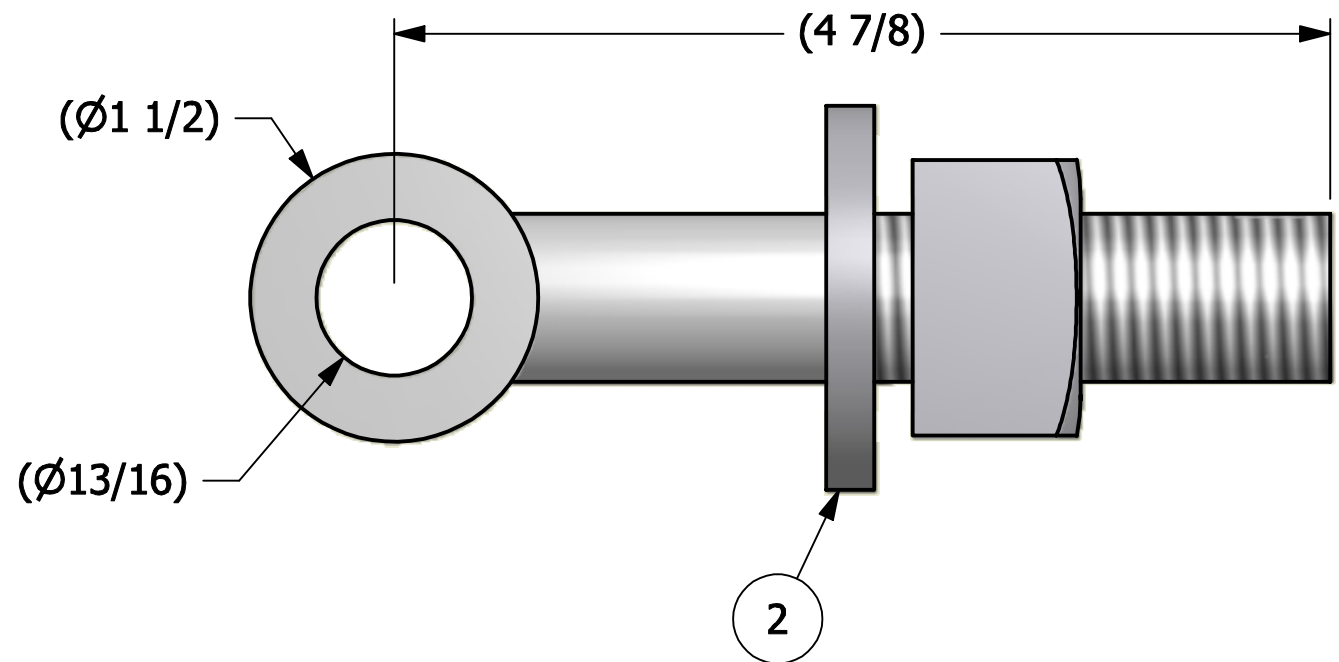
NO.	PART NAME	PART #	REQ'D	MATERIAL
1	EYEBOLT 7/8"X4 7/8"	EBR78478T	1	ASTM A307 GR B
2	FLAT WASHER 7/8"	WASH78T	1	CARBON STEEL
3	HEAVY SQUARE NUT 7/8" - 9	N78	1	CARBON STEEL



APPLY A BEAD OF WELD TO THE TWO END THREADS AFTER INSTALLING WASHER AND NUT.



ISOMETRIC VIEW



A	BRG	6-25-08	EBR78478T WAS 1045 STEEL
REV	BY	DATE	DESCRIPTION

UNLESS OTHERWISE SPECIFIED DIMENSIONAL TOLERANCES	DRAWN BY:	CHL
FRACTIONAL: ±1/16	CHECKED BY:	ACC
X.XX: ±.03	PROTOTYPE BY:	CHL
X.XXX: ±.015	PROTOTYPE DATE:	
ANGULAR: ±1°	APPROVED FOR PRODUCTION BY:	ACC
THIS PRINT, PROPERTY OF SALCO PRODUCTS INC., CONTAINS PROPRIETARY INFORMATION AND MUST NOT BE COPIED, REPRODUCED, OR USED DETRIMENTALLY TO OUR INTEREST.	PRODUCTION DATE:	7/23/2002
THIRD ANGLE PROJECTION		

SALCO PRODUCTS, INC.

PART NAME:
EYEBOLT ASSEMBLY 7/8"X4 7/8" SQ

MATERIAL: **SEE BOM**

PROJECT #: **020723** SHEET #: **1 OF 1** SCALE: **1:1**

DRAWING #: **B17129** PART #: **EB78478TA**