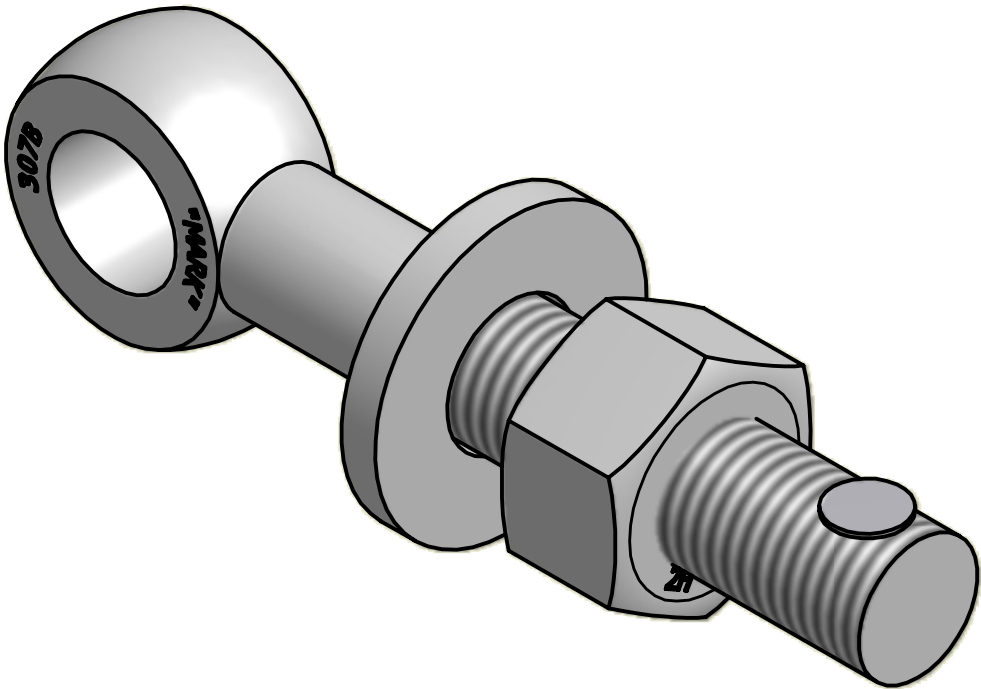
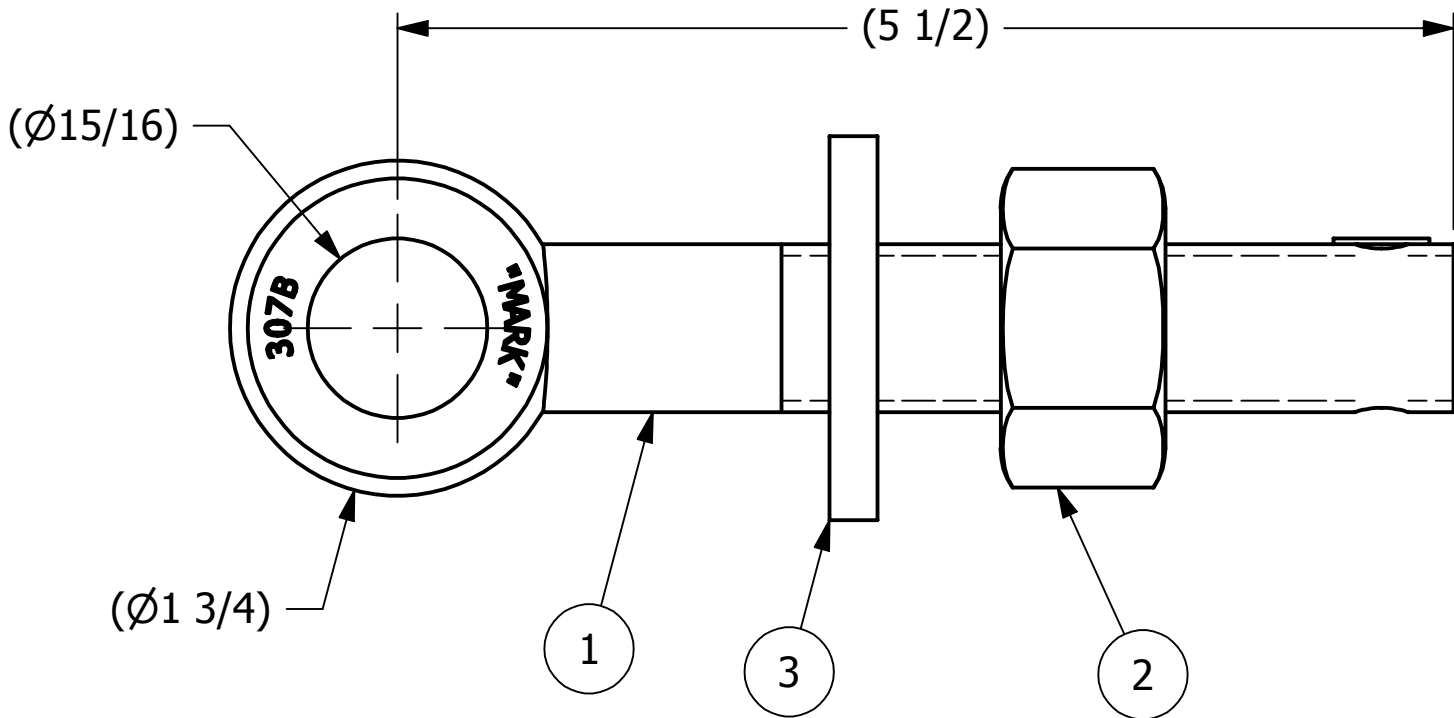
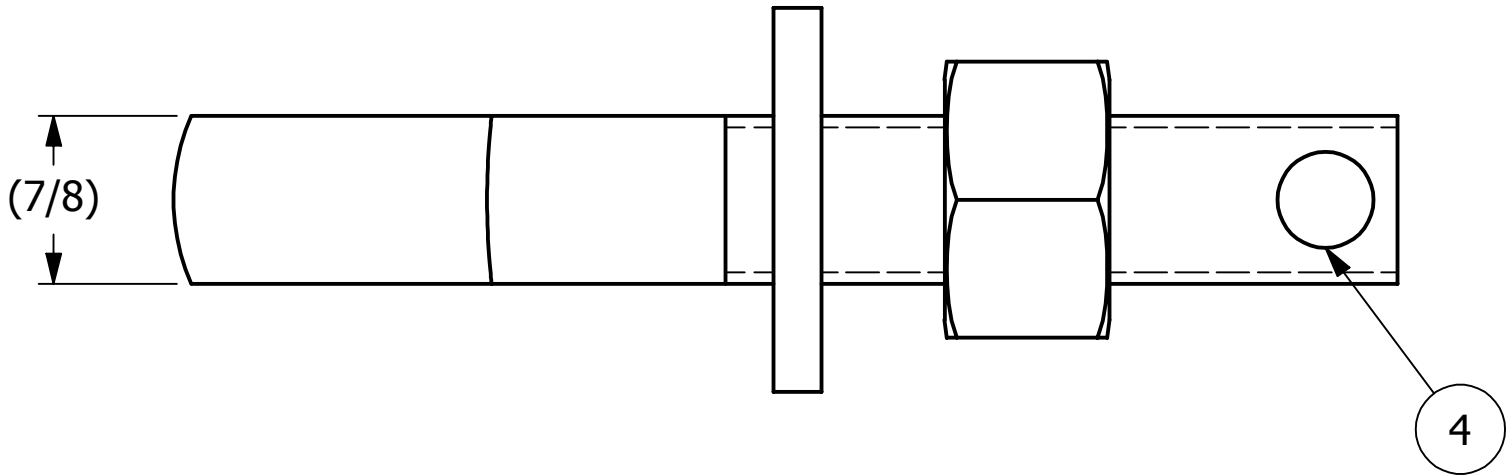




NO.	PART NAME	PART #	REQ'D	MATERIAL
1	EYEBOLT 7/8"X5 1/2"	EBR7855R	1	CARBON STEEL
2	HEAVY HEX NUT 7/8"-9	N78X	1	CARBON STEEL
3	FLAT WASHER 7/8"	WASH78T	1	CARBON STEEL
4	HUCK RIVET 1/4"X13/16"	A16204	1	304 SS



ISOMETRIC VIEW

C	CHL	6-10-02	CHANGED MATERIAL WASH78T FROM CS Z/P
B	CHL	11-26-01	REPLACED SN14S W/ A16204
A	FOD	8-5-99	UPDATED BOM, ITEM #1 WAS EB7855R
REV	BY	DATE	DESCRIPTION

UNLESS OTHERWISE SPECIFIED DIMENSIONAL TOLERANCES		DRAWN BY:	FOD	 SALCO PRODUCTS, INC.	
FRACTIONAL:	$\pm 1/16$	CHECKED BY:	SAB		
X.XX:	$\pm .03$	PROTOTYPE BY:	FOD		
X.XXX:	$\pm .015$	PROTOTYPE DATE:	5/26/1999	PART NAME: EYEBOLT ASSEMBLY 7/8"X5 1/2"	
ANGULAR:	$\pm 1^\circ$	APPROVED FOR PRODUCTION BY:	SAB	MATERIAL: SEE BOM	
DEBURR ALL SHARP EDGES. ALL MACHINED SURFACES TO HAVE A 125 RMS FINISH UNLESS NOTED OTHERWISE.		PRODUCTION DATE:	5/26/1999	PROJECT #:	SHEET #: 1 OF 1
THIRD ANGLE PROJECTION				DRAWING #:	SCALE: 1:1
				B13484	EB7855XA

THIS PRINT, PROPERTY OF SALCO PRODUCTS INC., CONTAINS PROPRIETARY INFORMATION
AND MUST NOT BE COPIED, REPRODUCED, OR USED DETRIMENTALLY TO OUR INTEREST.