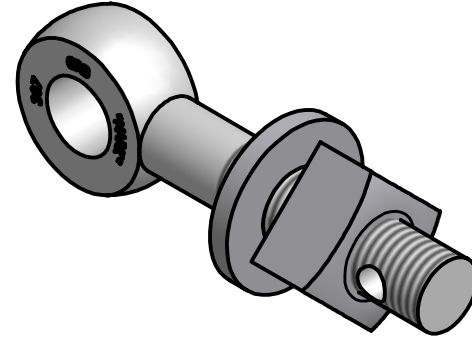
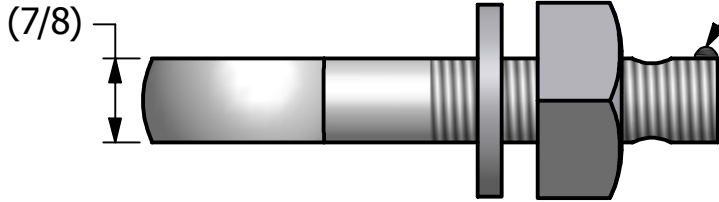


NO.	PART NAME	PART #	REQ'D	MATERIAL
1	EYEBOLT 7/8"X5"	EBR785H	1	1045 CS
2	HEAVY SQUARE NUT 7/8" - 9	N78	1	CARBON STEEL
3	FLAT WASHER 7/8" USS	WASH78T	1	CARBON STEEL

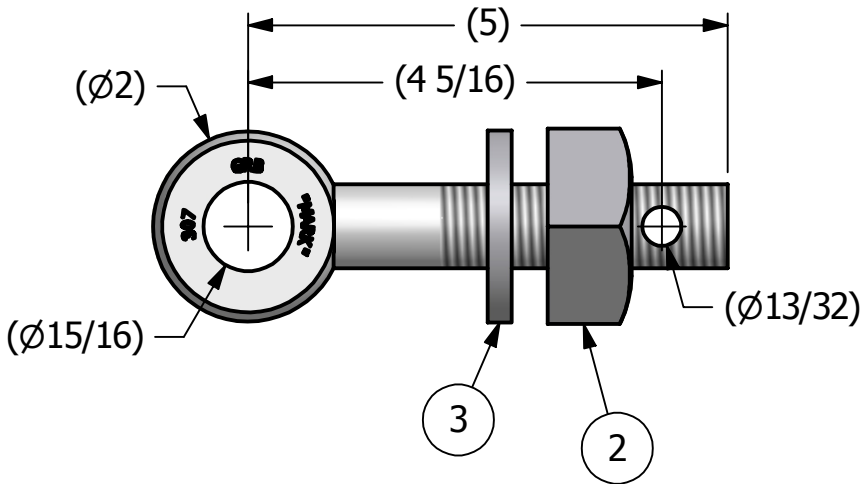
APPLY A BEAD OF WELD TO THE TWO END  
THREADS AFTER INSTALLING WASHER AND NUT.



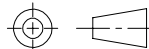
ISOMETRIC VIEW


NOTES:

1. APPLY JET LUBE(PFPE GREASE) TO WORKING THREAD AREA, THE BOTTOM FACE OF THE NUT AND THE TOP FACE OF THE WASHER, THEN APPLY THREAD PROTECTION.
2. BOLT STRENGTH EQUIVALENT TO ASTM A449 TYPE 1.
3. WASHER IS ASTM F436 HARDENED.



A	CHL	4-10-07	NEW PART ADDED TO SYSTEM
REV	BY	DATE	DESCRIPTION

<small>UNLESS OTHERWISE SPECIFIED DIMENSIONAL TOLERANCES</small> FRACTIONAL: ±1/16 X.XX: ±.03 X.XXX: ±.015 ANGULAR: ±1° <small>THIS PRINT, PROPERTY OF SALCO PRODUCTS INC, CONTAINS PROPRIETARY INFORMATION AND MUST NOT BE COPIED, REPRODUCED, OR USED DETRIMENTALLY TO OUR INTEREST.</small> <small>THIRD ANGLE PROJECTION</small> 	DRAWN BY:	AJB
	CHECKED BY:	ACC
	PROTOTYPE BY:	AJB
	PROTOTYPE DATE:	5/19/2006
	APPROVED FOR PRODUCTION BY:	ACC
PRODUCTION DATE:	4/10/2007	

 <b>SALCO PRODUCTS, INC.</b>		
PART NAME: EYEBOLT ASSEMBLY 7/8"X5		
MATERIAL: SEE B.O.M.		
PROJECT #:	WAG0325	SHEET #: 1 OF 1
SCALE:	1:2	
DRAWING #:	A21990	PART #:
		EB785HAL