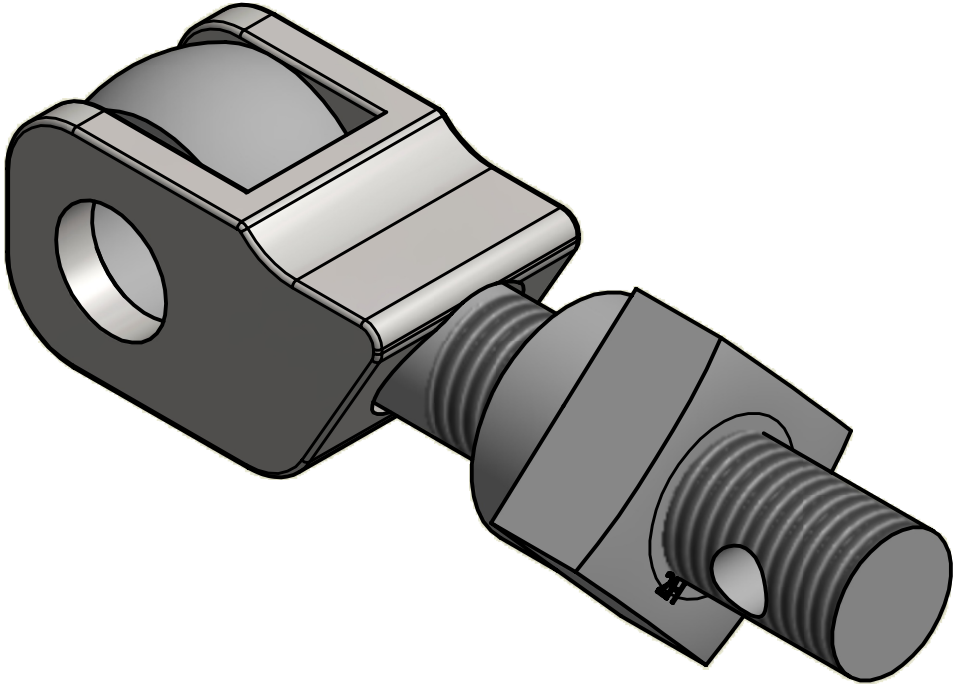
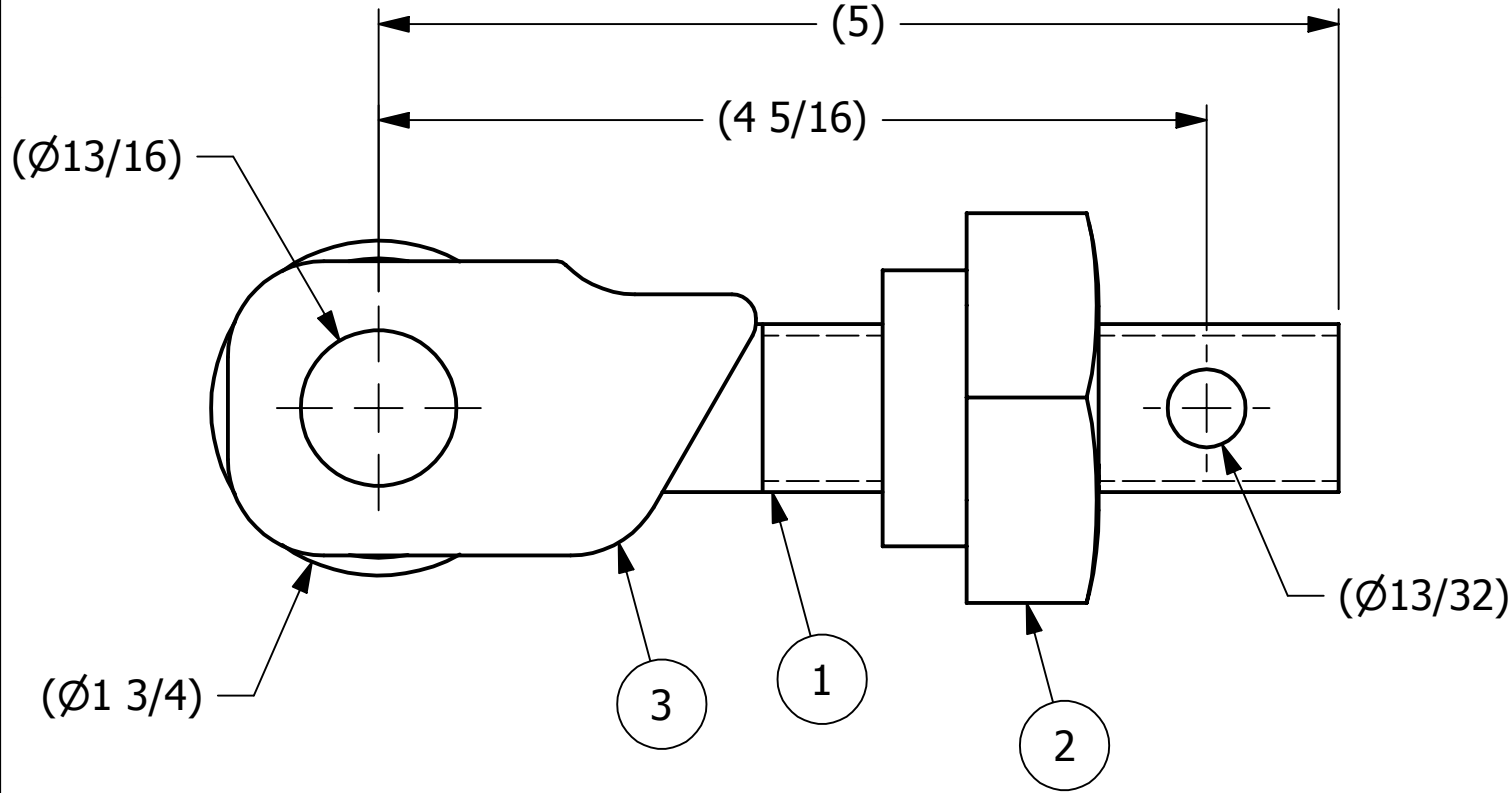
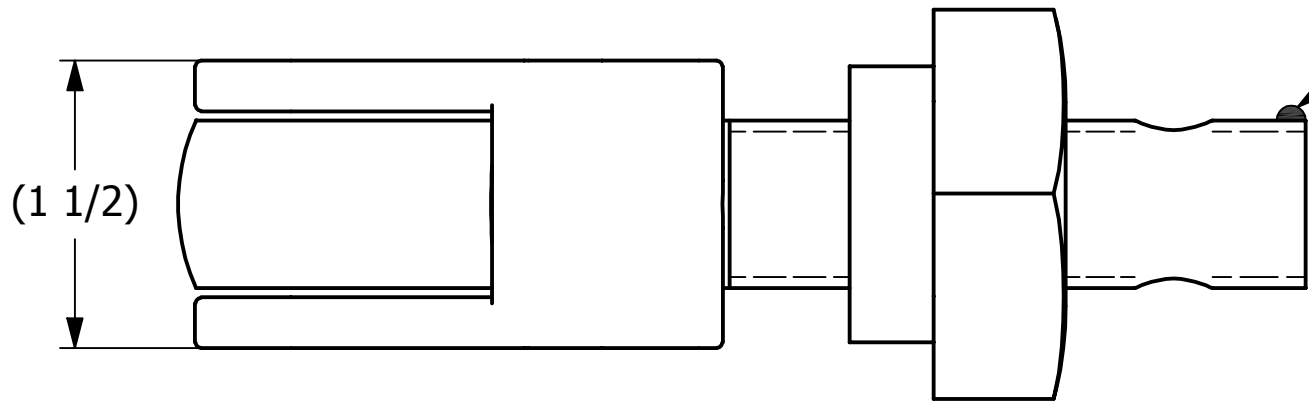



NO.	PART NAME	PART #	REQ'D	MATERIAL
1	EYEBOLT 7/8"X5"	EBR785H	1	CARBON STEEL
2	HEAVY SQUARE FERRULE NUT 7/8"-9	N78SN	1	CARBON STEEL
3	EYEBOLT SAFETY CATCH 7/8"	DEB275SC	1	316 SS

APPLY A BEAD OF WELD TO THE TWO END
THREADS AFTER INSTALLING SAFETY CATCH AND NUT.



B	JJK	4-17-14	UPDATED EYEBOLT OD
A	FOD	8-5-99	UPDATED BOM, ITEM #1 WAS EB785H
REV	BY	DATE	DESCRIPTION
			
PART NAME: EYEBOLT ASSEMBLY 7/8"X5"			
MATERIAL: SEE BOM			
PROJECT #:		SHEET #: 1 OF 1	SCALE: 1:1
DRAWING #:		PART #:	
B13493		EB785HASC	

UNLESS OTHERWISE SPECIFIED DIMENSIONAL TOLERANCES FRACTIONAL: ±1/16 X.XX: ±.03 X.XXX: ±.015 ANGULAR: ±1° DEBURR ALL SHARP EDGES. ALL MACHINED SURFACES TO HAVE A 125 RMS FINISH UNLESS NOTED OTHERWISE. THIRD ANGLE PROJECTION	DRAWN BY:	FOD
	CHECKED BY:	SAB
	PROTOTYPE BY:	FOD
	PROTOTYPE DATE:	5/27/1999
	APPROVED FOR PRODUCTION BY:	SAB
	PRODUCTION DATE:	5/27/1999

THIS PRINT, PROPERTY OF SALCO PRODUCTS INC., CONTAINS PROPRIETARY INFORMATION
AND MUST NOT BE COPIED, REPRODUCED, OR USED DETRIMENTALLY TO OUR INTEREST.