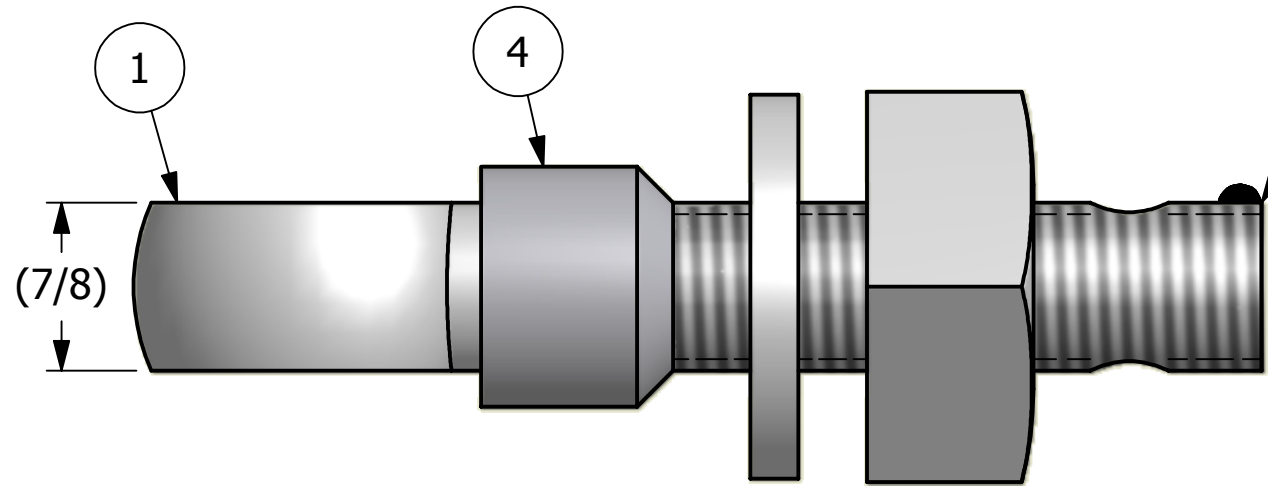
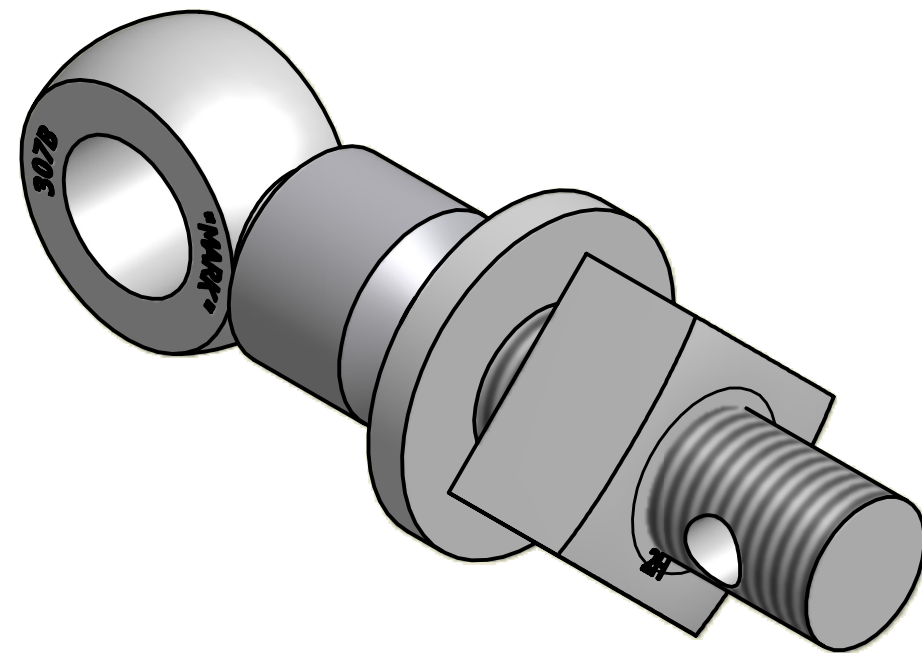


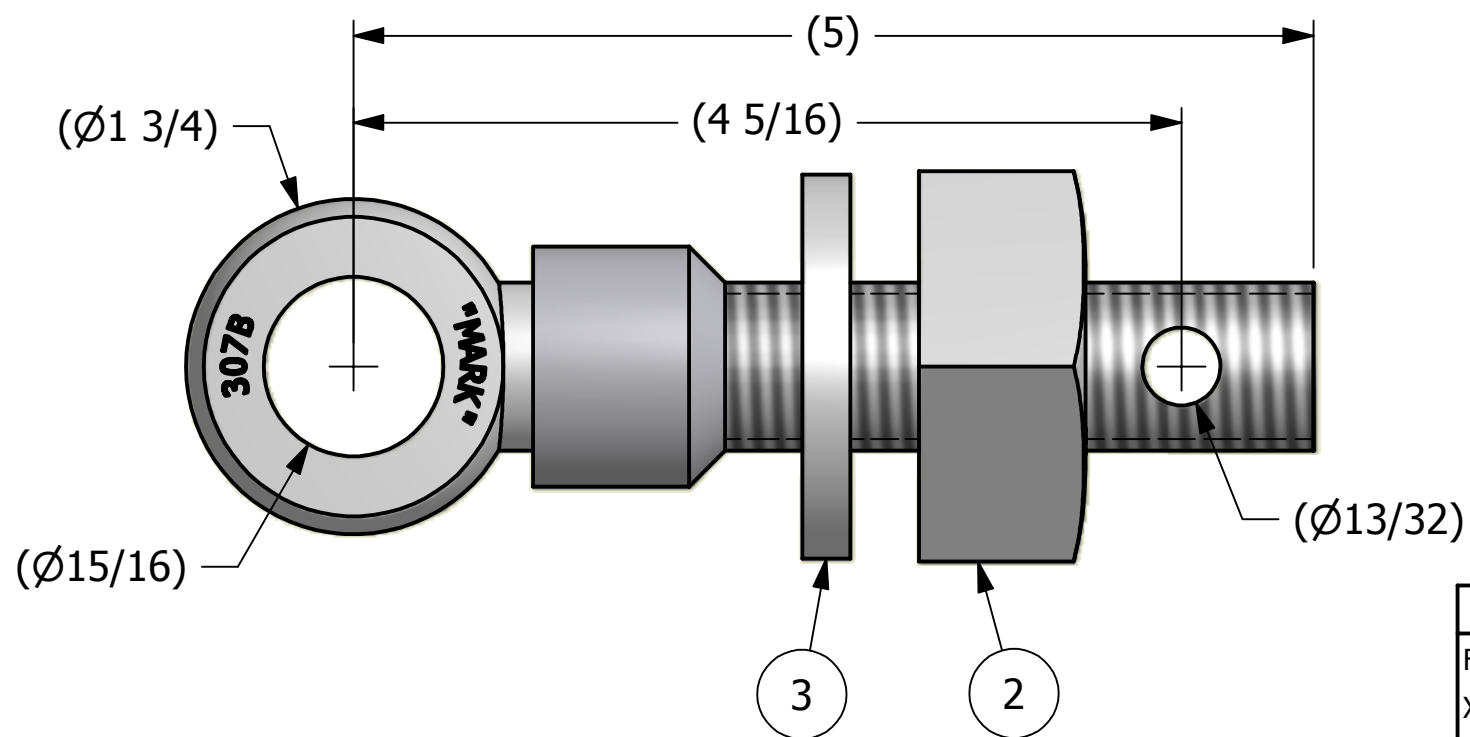
NO.	PART NAME	PART #	REQ'D	MATERIAL
1	EYEBOLT 7/8"X5"	EBR785HFT	1	CARBON STEEL
2	HEAVY SQUARE NUT 7/8"-9	N78	1	CARBON STEEL
3	FLAT WASHER 7/8"	WASH78T	1	CARBON STEEL
4	EYEBOLT SAFETY COLLAR 7/8"	COLLAR78S3T3	1	303 SS



APPLY A BEAD OF WELD TO THE TWO END THREADS AFTER INSTALLING WASHER AND NUT



ISOMETRIC VIEW



REV	BY	DATE	DESCRIPTION
B	CHL	9-20-10	REPLACED COLLAR78S4T3 W/COLLAR78S3T3
A	CHL	1-4-08	NEW PART ADDED TO SYSTEM

NOTE:
APPLY JET LUBE(PFPE GREASE) TO WORKING THREAD AREA,
THE BOTTOM FACE OF THE NUT AND THE TOP FACE OF THE
WASHER.

UNLESS OTHERWISE SPECIFIED DIMENSIONAL TOLERANCES	DRAWN BY:	CHL
FRACTIONAL: ±1/16	CHECKED BY:	PJG
X.XX: ±.03	PROTOTYPE BY:	CHL
X.XXX: ±.015	PROTOTYPE DATE:	10/5/2007
ANGULAR: ±1°	APPROVED FOR PRODUCTION BY:	PJG
THIS PRINT, PROPERTY OF SALCO PRODUCTS INC., CONTAINS PROPRIETARY INFORMATION AND MUST NOT BE COPIED, REPRODUCED, OR USED DETRIMENTALLY TO OUR INTEREST.	PRODUCTION DATE:	1/4/2008
THIRD ANGLE PROJECTION		

SALCO PRODUCTS, INC.		
PART NAME: EYEBOLT ASSEMBLY 7/8"X5"		
MATERIAL: SEE BOM		
PROJECT #: WAG0471	SHEET #: 1 OF 1	SCALE: 1:1
DRAWING #: B24231	PART #: EB785HFTATC3L	