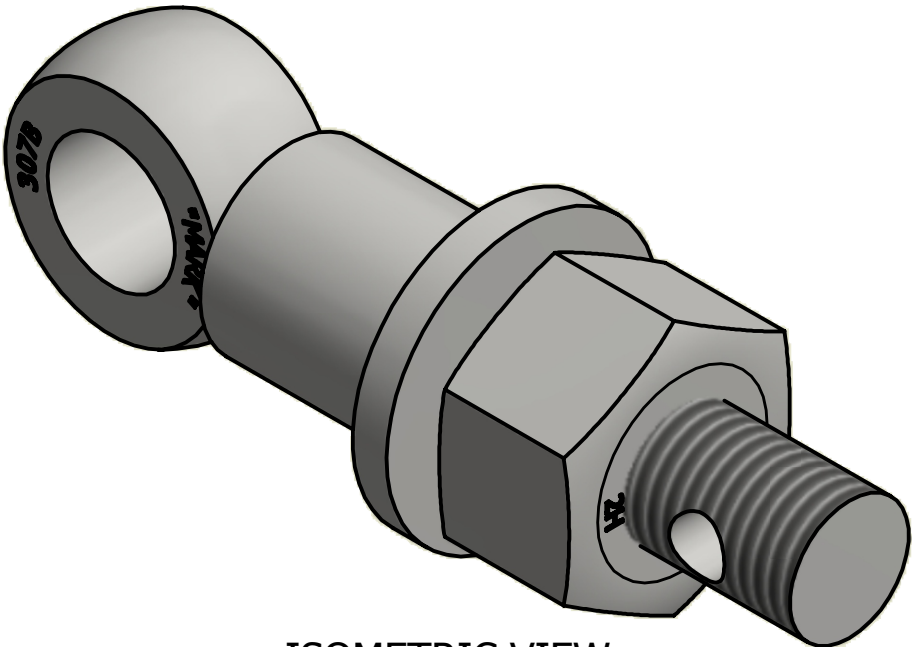



NO.	PART NAME	PART #	REQ'D	MATERIAL
1	EYEBOLT 7/8"X5"	EBR785H	1	CARBON STEEL
2	HEAVY HEX NUT 7/8"-9	N78XS	1	CARBON STEEL
3	FLAT WASHER 7/8"	WASH78T	1	CARBON STEEL
4	SAFETY COLLAR 1"	COLLAR1	1	CARBON STEEL

APPLY A BEAD OF WELD TO THE TWO END THREADS
AFTER INSTALLING COLLAR, WASHER AND NUT.



B	JJK	5-9-14	UPDATED EYEBOLT OD
A	CHL	9-20-10	DRAWING ADDED TO NETWORK
REV	BY	DATE	DESCRIPTION

UNLESS OTHERWISE SPECIFIED DIMENSIONAL TOLERANCES FRACTIONAL: ±1/16 X.XX: ±.03 X.XXX: ±.015 ANGULAR: ±1° <small>THIS PRINT, PROPERTY OF SALCO PRODUCTS INC., CONTAINS PROPRIETARY INFORMATION AND MUST NOT BE COPIED, REPRODUCED, OR USED DETRIMENTALLY TO OUR INTEREST.</small> THIRD ANGLE PROJECTION	DRAWN BY:	CHL	 SALCO PRODUCTS, INC.	
	CHECKED BY:	VD		
	PROTOTYPE BY:	CHL	PART NAME: EYEBOLT ASSEMBLY 7/8"X5"	
	PROTOTYPE DATE:	10/29/2009	MATERIAL: SEE BOM	
	APPROVED FOR PRODUCTION BY:	VD	PROJECT #: WAG0742	SHEET #: 1 OF 1
	PRODUCTION DATE:	9/20/2010	DRAWING #: B27688	PART #: EB785X2HAC