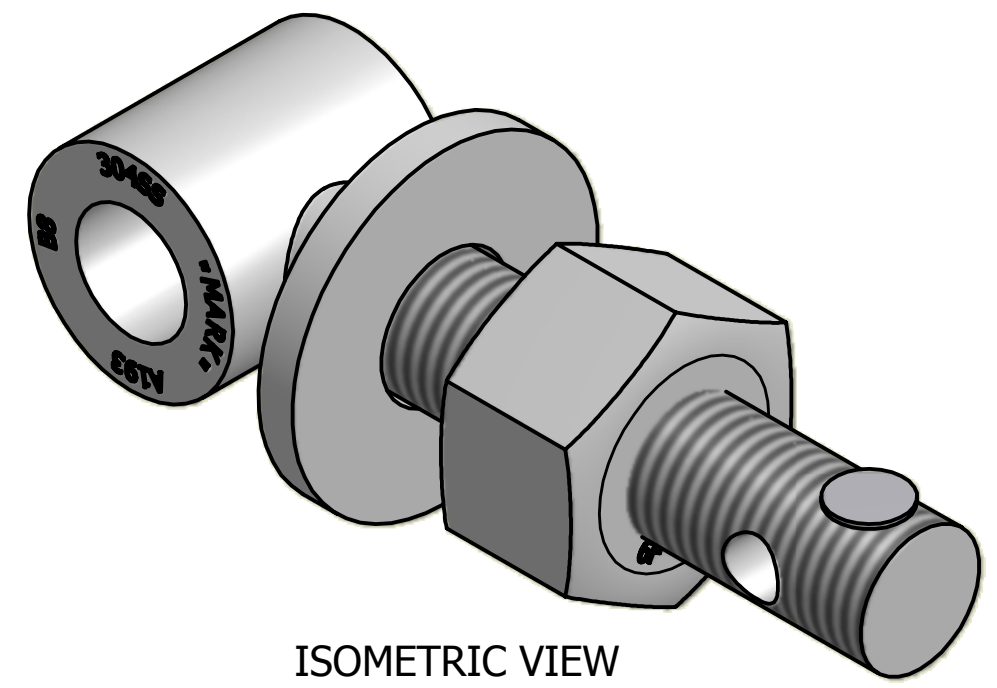
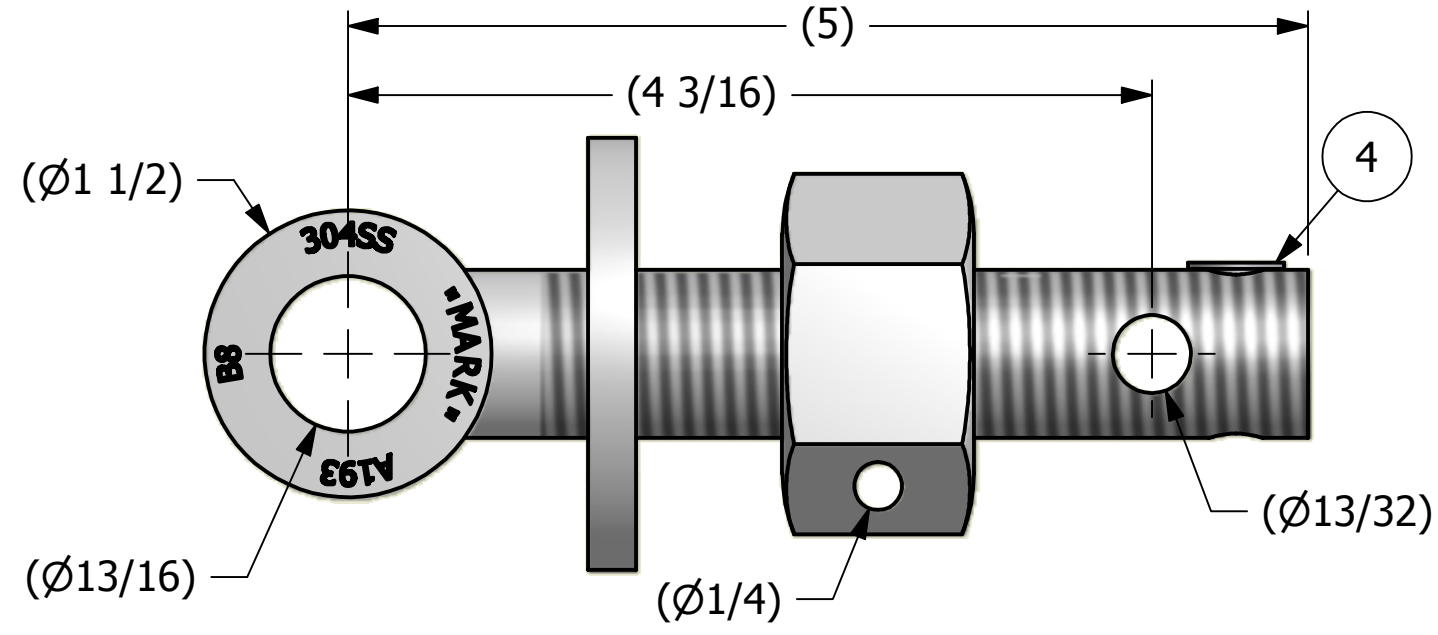
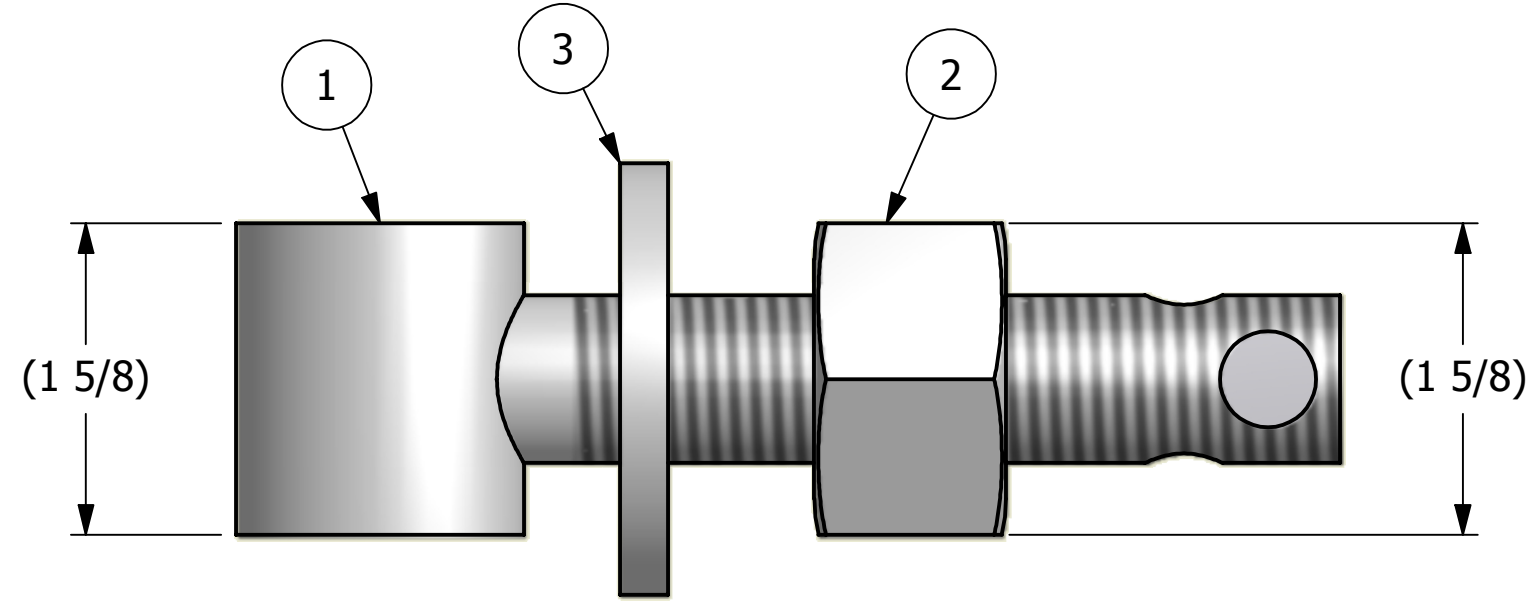


NO.	PART NAME	PART#	REQ'D	MATERIAL
1	EYEBOLT 7/8"X5"	EBR785TH2S4R	1	304 SS
2	HEAVY HEX NUT 7/8"-9	N78XS6SH	1	416 SS
3	FLAT WASHER 7/8"	WASH78S4T	1	304 SS
4	HUCK RIVET 1/4"X13/16"	A16204	1	304 SS



ISOMETRIC VIEW

A	CHL	9-20-10	DRAWING ADDED TO NETWORK
REV	BY	DATE	DESCRIPTION

UNLESS OTHERWISE SPECIFIED DIMENSIONAL TOLERANCES	DRAWN BY:	CHL
FRACTIONAL: ±1/16	CHECKED BY:	PJG
X.XX: ±.03	PROTOTYPE BY:	CHL
X.XXX: ±.015	PROTOTYPE DATE:	5/21/2009
ANGULAR: ±1°	APPROVED FOR PRODUCTION BY:	
THIS PRINT, PROPERTY OF SALCO PRODUCTS INC., CONTAINS PROPRIETARY INFORMATION AND MUST NOT BE COPIED, REPRODUCED, OR USED DETRIMENTALLY TO OUR INTEREST.	PRODUCTION DATE:	
THIRD ANGLE PROJECTION		

**SALCO PRODUCTS, INC.**

PART NAME: **EYEBOLT ASSEMBLY 7/8"X5"**

MATERIAL: **SEE BOM**

PROJECT #: **WAG0682** SHEET #: **1 OF 1** SCALE: **1:1**

DRAWING #: **B26918** PART #: **EB785X2TH2HAS4**