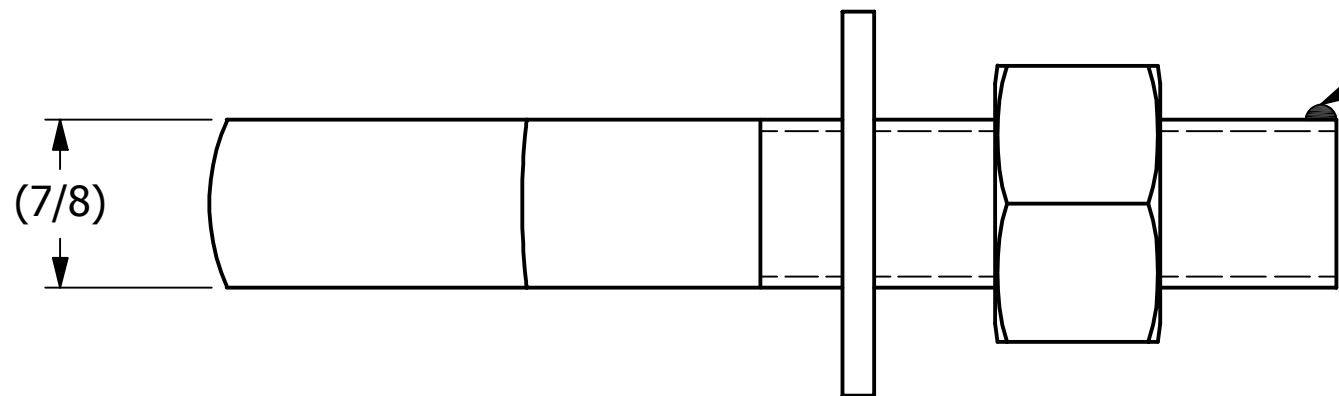
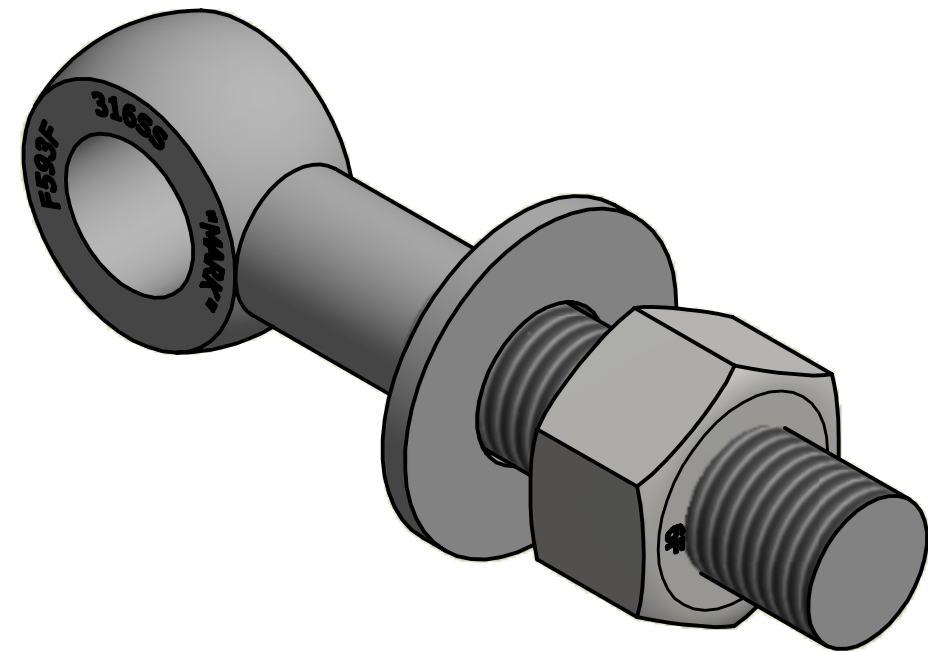


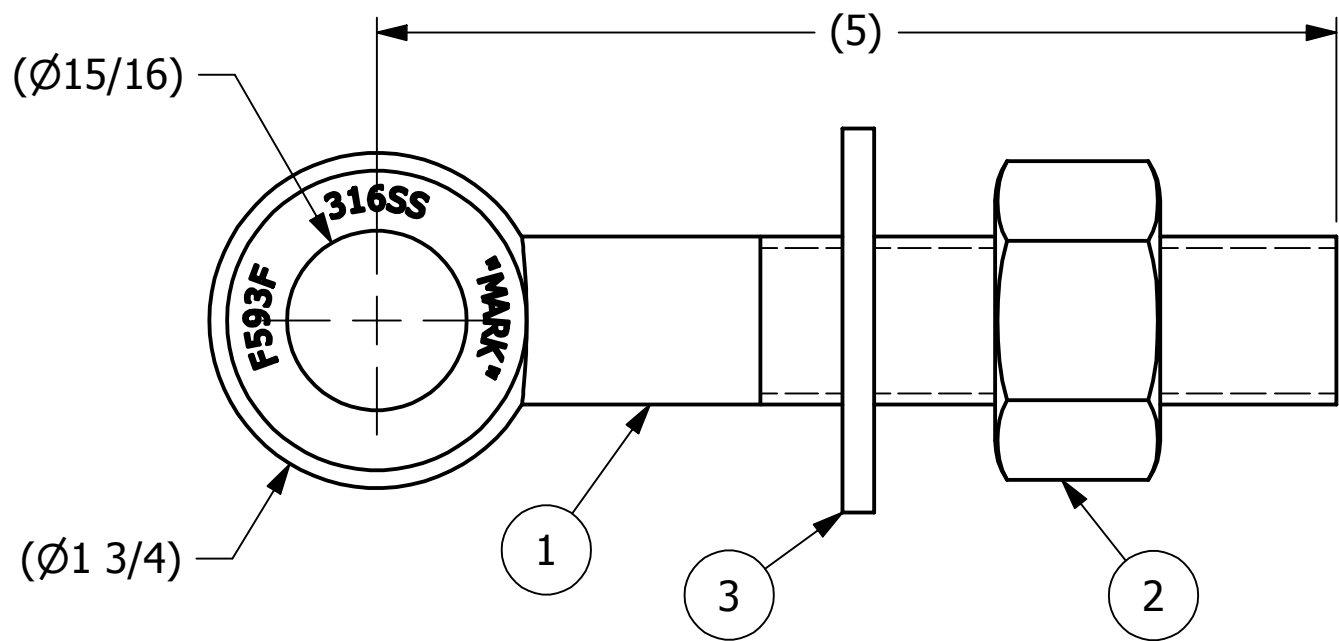
NO.	PART NAME	PART #	REQ'D	MATERIAL
1	EYEBOLT 7/8"X5"	EBR785S6	1	316 SS
2	HEAVY HEX NUT 7/8"-9	N78XS6	1	416 SS
3	FLAT WASHER 7/8" SAE	WASH78S6	1	316 SS



APPLY A BEAD OF WELD TO THE TWO END THREADS AFTER INSTALLING WASHER AND NUT.



ISOMETRIC VIEW



B	JJK	4-21-14	UPDATED EYEBOLT OD
A	FOD	8-5-99	UPDATED BOM, ITEM #1 WAS EB785S6
REV	BY	DATE	DESCRIPTION

UNLESS OTHERWISE SPECIFIED DIMENSIONAL TOLERANCES FRACTIONAL: ±1/16 X.XX: ±.03 X.XXX: ±.015 ANGULAR: ±1° DEBURR ALL SHARP EDGES. ALL MACHINED SURFACES TO HAVE A 125 RMS FINISH UNLESS NOTED OTHERWISE.	DRAWN BY:	FOD
	CHECKED BY:	SAB
	PROTOTYPE BY:	FOD
	PROTOTYPE DATE:	5/28/1999
	APPROVED FOR PRODUCTION BY:	SAB
THIRD ANGLE PROJECTION	PRODUCTION DATE:	5/28/1999

SALCO PRODUCTS, INC.

PART NAME:
EYEBOLT ASSEMBLY 7/8" X 5"

MATERIAL: **SEE BOM**

PROJECT #: SHEET #: **1 OF 1** SCALE: **1:1**

DRAWING #: **B13496** PART #: **EB785XAS6**

THIS PRINT, PROPERTY OF SALCO PRODUCTS INC., CONTAINS PROPRIETARY INFORMATION AND MUST NOT BE COPIED, REPRODUCED, OR USED DETRIMENTALLY TO OUR INTEREST.