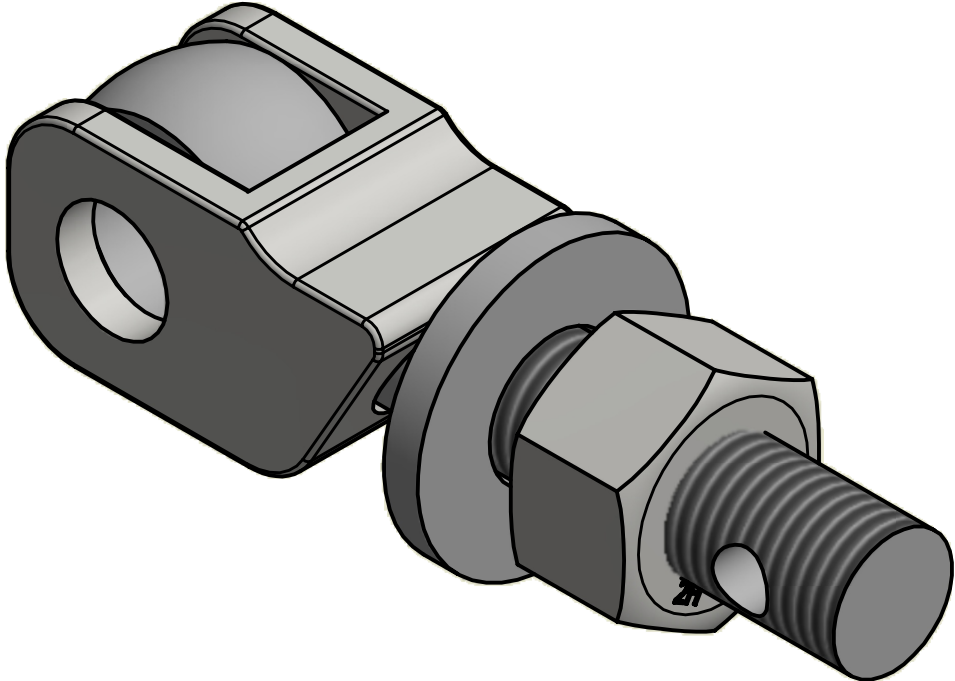



2		1		
NO.	PART NAME	PART #	REQ'D	MATERIAL
1	EYEBOLT 7/8"X5"	EBR785H	1	CARBON STEEL
2	HEAVY HEX NUT 7/8"-9	N78X	1	CARBON STEEL
3	EYEBOLT SAFETY CATCH 7/8"	DEB275SC	1	316 SS
4	FLAT WASHER 7/8"	WASH78T	1	CARBON STEEL



B	JJK	4-21-14	UPDATED EYEBOLT OD
A	CHL	6-10-02	CHANGED MATERIAL WASH78T WAS CS Z/P
REV	BY	DATE	DESCRIPTION

UNLESS OTHERWISE SPECIFIED DIMENSIONAL TOLERANCES FRACTIONAL: ±1/16 X.XX: ±.03 X.XXX: ±.015 ANGULAR: ±1° DEBURR ALL SHARP EDGES. ALL MACHINED SURFACES TO HAVE A 125 RMS FINISH UNLESS NOTED OTHERWISE. THIRD ANGLE PROJECTION	DRAWN BY:	CHL
	CHECKED BY:	ACC
	PROTOTYPE BY:	CHL
	PROTOTYPE DATE:	1/11/2001
	APPROVED FOR PRODUCTION BY:	ACC
	PRODUCTION DATE:	1/11/2001

 SALCO PRODUCTS, INC.			
PART NAME: EYEBOLT ASSEMBLY 7/8"X5"			
MATERIAL: SEE BOM			
PROJECT #: 010109		SHEET #: 1 OF 1	SCALE: 1:1
DRAWING #: B15329		PART #: EB785XHASC	