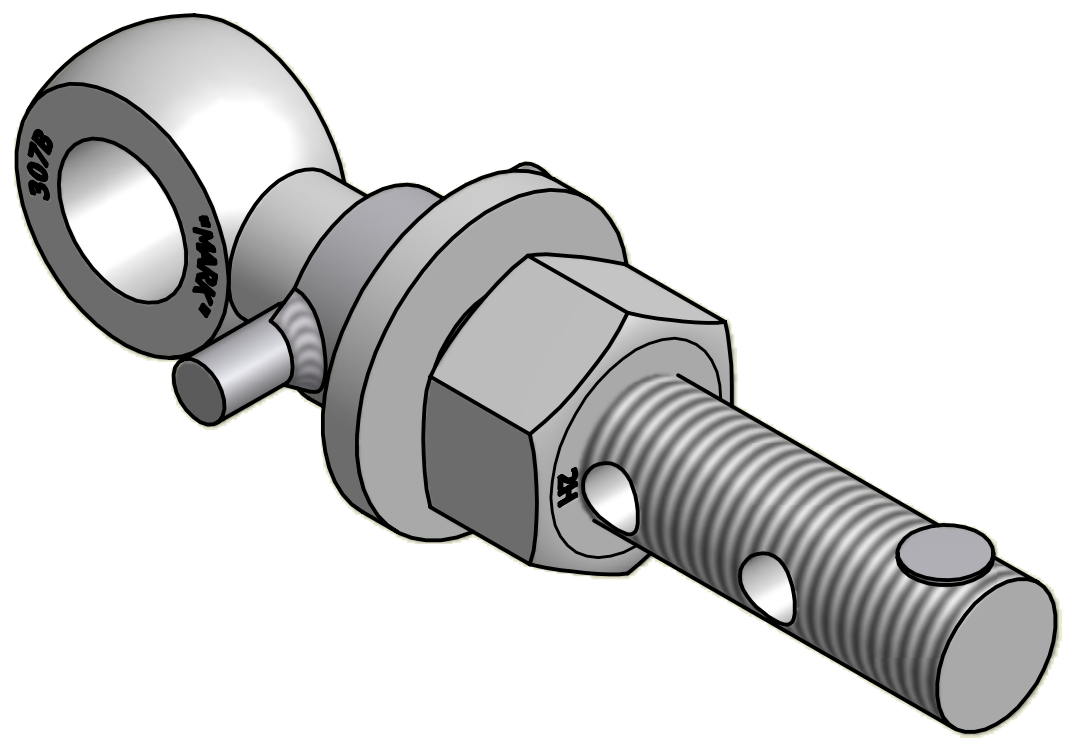
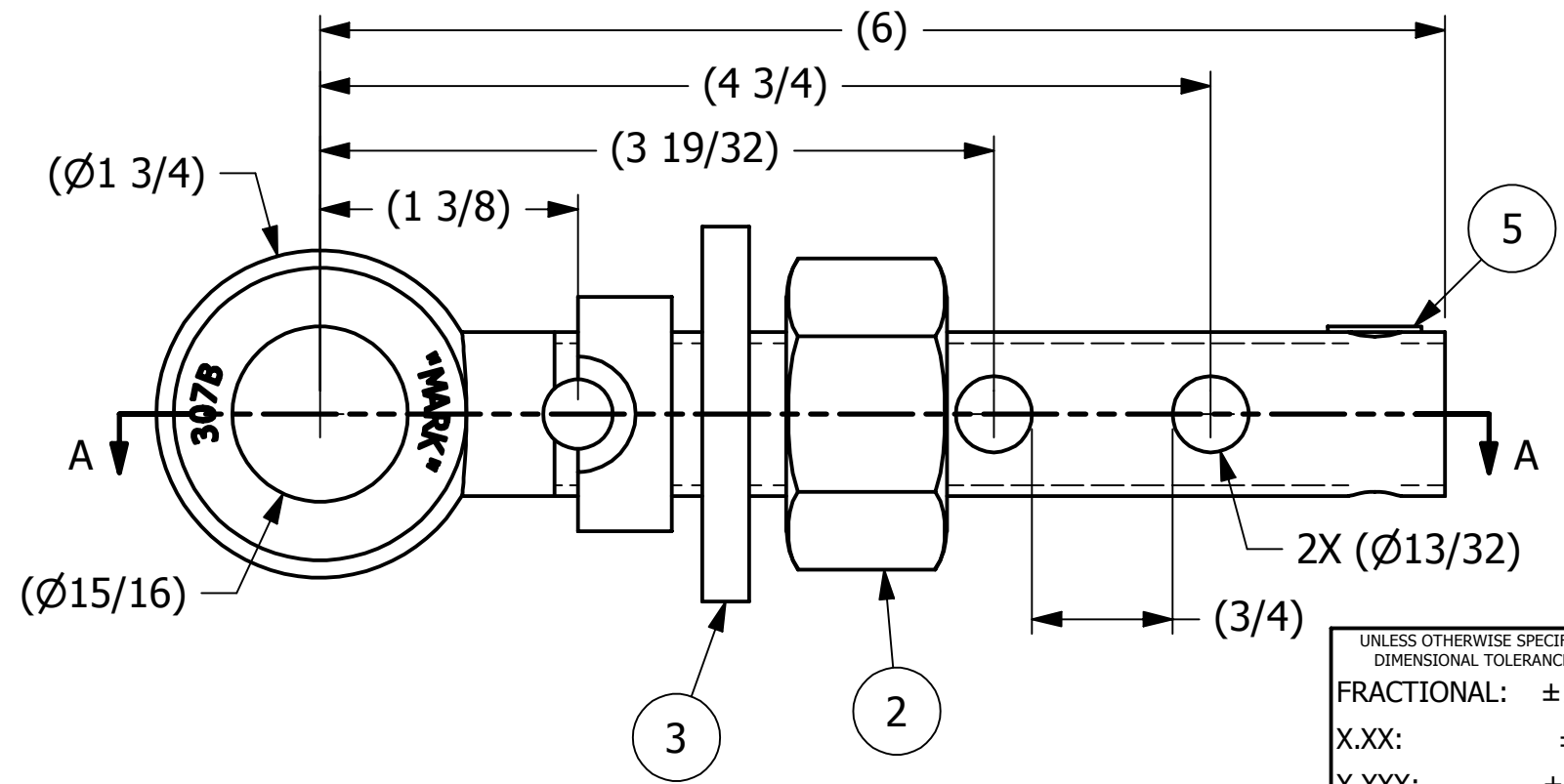


NO.	PART NAME	PART#	REQ'D	MATERIAL
1	EYEBOLT 7/8"X6"	EBR7862HFTR	1	CARBON STEEL
2	HEAVY HEX NUT 7/8"-9	N78X	1	CARBON STEEL
3	FLAT WASHER 7/8"	WASH78T	1	CARBON STEEL
4	COLLAR 7/8"	COLLAR78S4TP	1	304 SS
5	HUCK RIVET 1/4"X13/16"	A16204	1	304 SS

SECTION A-A



ISOMETRIC VIEW

UNLESS OTHERWISE SPECIFIED  
DIMENSIONAL TOLERANCES

FRACTIONAL: ±1/16  
X.XX: ±.03  
X.XXX: ±.015  
ANGULAR: ±1°  
DEBURR ALL SHARP EDGES.  
ALL MACHINED SURFACES TO  
HAVE A 125 RMS FINISH UNLESS  
NOTED OTHERWISE.

THIRD ANGLE PROJECTION

DRAWN BY: CHL  
CHECKED BY: VD  
PROTOTYPE BY: CHL  
PROTOTYPE DATE: 6/15/2010  
APPROVED FOR PRODUCTION BY: VD  
PRODUCTION DATE: 6/30/2010

A	CHL	6-30-10	NEW PART ADDED TO SYSTEM
REV	BY	DATE	DESCRIPTION
<b>SALCO PRODUCTS, INC.</b>			
PART NAME: EYEBOLT ASSEMBLY 7/8"X6"			
MATERIAL: SEE BOM			
PROJECT #: 100427		SHEET #: 1 OF 1	SCALE: 1:1
DRAWING #: B28934		PART #: EB786X2HATCP	

THIS PRINT, PROPERTY OF SALCO PRODUCTS INC., CONTAINS PROPRIETARY INFORMATION AND MUST NOT BE COPIED, REPRODUCED, OR USED DETRIMENTALLY TO OUR INTEREST.