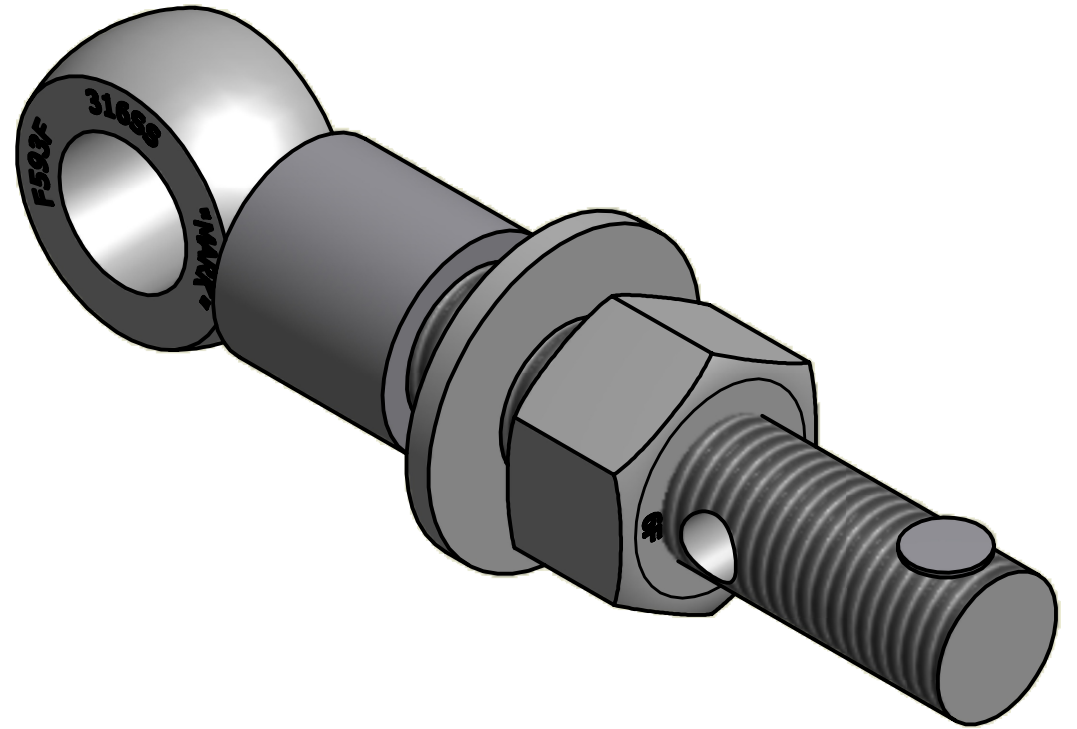


NO.	PART NAME	PART #	REQ'D	MATERIAL
1	EYEBOLT 7/8"X6"	EBR786HS6R	1	316 SS
2	HEAVY HEX NUT 7/8"-9	N78XS6	1	416 SS
3	FLAT WASHER 7/8" SAE	WASH78S6	1	316 SS
4	SAFETY COLLAR 1 1/4"	COLLAR1S6	1	316 SS
5	HUCK RIVET 1/4"X13/16"	A16204	1	304 SS



ISOMETRIC VIEW

C	TAK	8-20-12	REPLACED N78XS6S WITH N78XS6
B	CHL	6-11-08	REPLACED COLLAR1S4 W/COLLAR1S6
A	CHL	11-26-01	REPLACED SN14S W/A16204
REV	BY	DATE	DESCRIPTION
 SALCO PRODUCTS, INC.			
PART NAME: EYEBOLT ASSEMBLY 7/8"X6"			
MATERIAL: SEE BOM			
PROJECT #:		SHEET #: 1 OF 1	SCALE: 1:1
DRAWING #:		PART #:	
B13513		EB786XHAS6C	

UNLESS OTHERWISE SPECIFIED DIMENSIONAL TOLERANCES	DRAWN BY:	FOD
FRACTIONAL: $\pm 1/16$	CHECKED BY:	SAB
X.XX: $\pm .03$	PROTOTYPE BY:	FOD
X.XXX: $\pm .015$	PROTOTYPE DATE:	4/7/1999
ANGULAR: $\pm 1^\circ$	APPROVED FOR PRODUCTION BY:	SAB
THIS PRINT, PROPERTY OF SALCO PRODUCTS INC., CONTAINS PROPRIETARY INFORMATION AND MUST NOT BE COPIED, REPRODUCED, OR USED DETRIMENTALLY TO OUR INTEREST.	PRODUCTION DATE:	6/7/1999
THIRD ANGLE PROJECTION		
