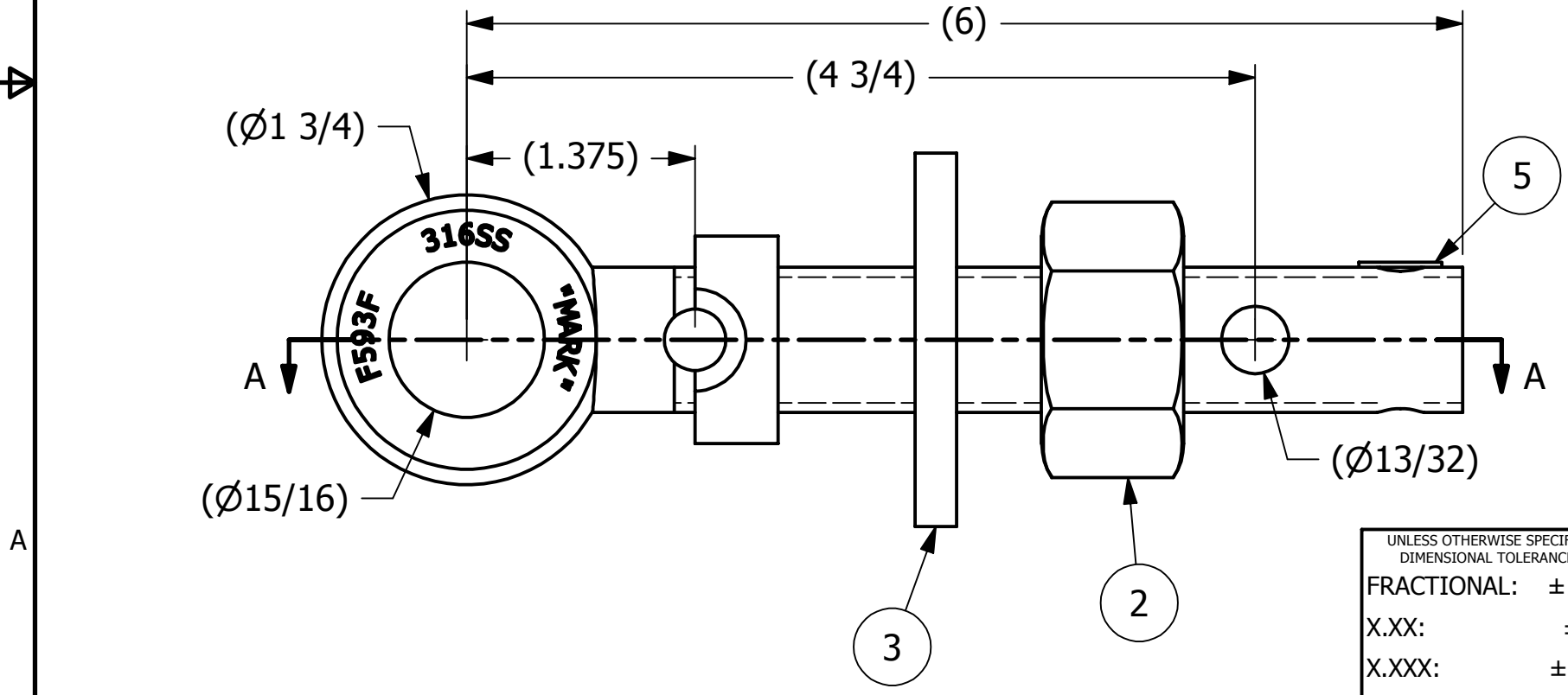
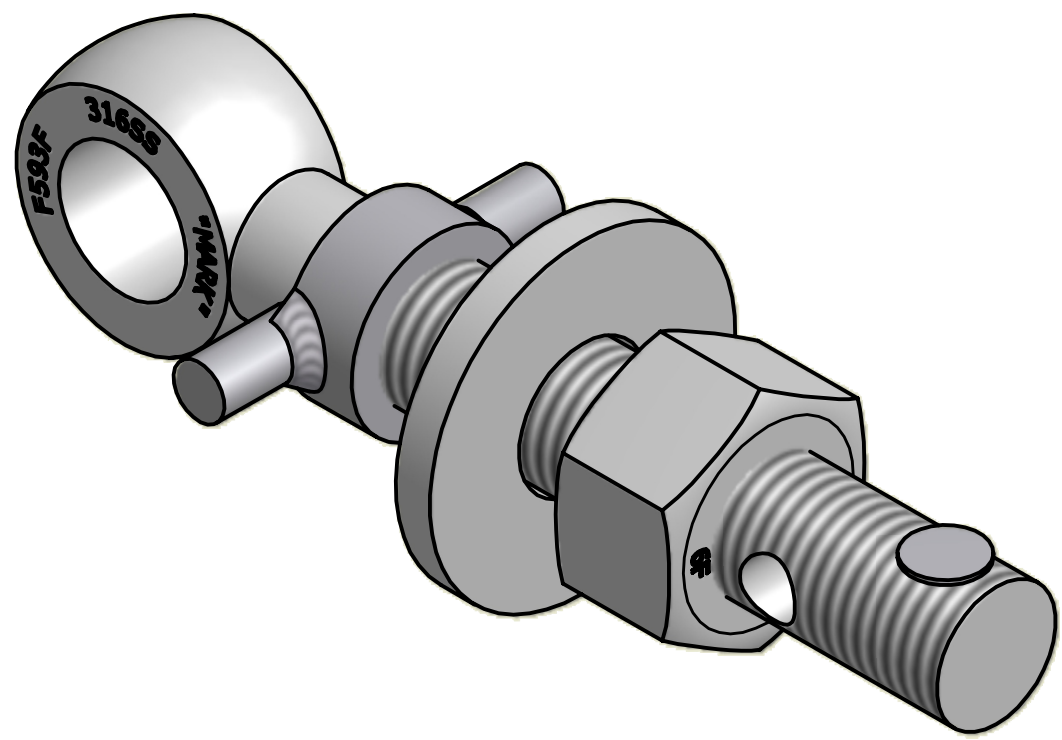



2		1		
NO.	PART NAME	PART#	REQ'D	MATERIAL
1	EYEBOLT 7/8"X6"	EBR786HFTS6R	1	316 SS
2	HEAVY HEX NUT 7/8"-9	N78XS6	1	416 SS
3	FLAT WASHER 7/8"	WASH78S4T	1	304 SS
4	COLLAR 7/8"	COLLAR78S4TP	1	304 SS
5	HUCK RIVET 1/4"X13/16"	A16204	1	304 SS



ISOMETRIC VIEW

UNLESS OTHERWISE SPECIFIED
DIMENSIONAL TOLERANCES
FRACTIONAL: $\pm 1/16$
X.XX: $\pm .03$
X.XXX: $\pm .015$
ANGULAR: $\pm 1^\circ$
DEBURR ALL SHARP EDGES.
ALL MACHINED SURFACES TO
HAVE A 125 RMS FINISH UNLESS
NOTED OTHERWISE.
THIRD ANGLE PROJECTION

DRAWN BY:	CHL
CHECKED BY:	VD
PROTOTYPE BY:	CHL
PROTOTYPE DATE:	5/4/2010
APPROVED FOR PRODUCTION BY:	VD
PRODUCTION DATE:	6/30/2010

A	CHL	6-30-10	NEW PART ADDED TO SYSTEM
REV	BY	DATE	DESCRIPTION
 SALCO PRODUCTS, INC.			
PART NAME: EYEBOLT ASSEMBLY 7/8"X6"			
MATERIAL: SEE BOM			
PROJECT #: 100427		SHEET #: 1 OF 1	SCALE: 1:1
DRAWING #: B28639		PART #: EB786XHAS6TCP	