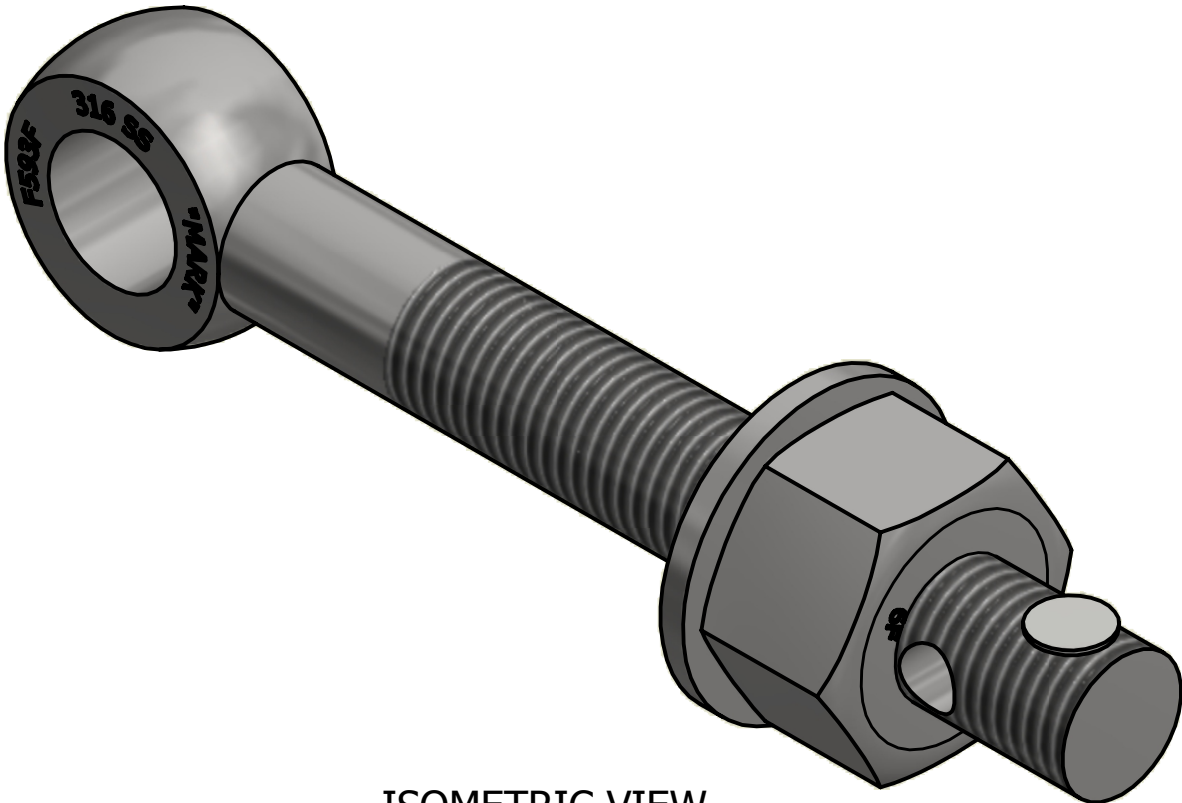
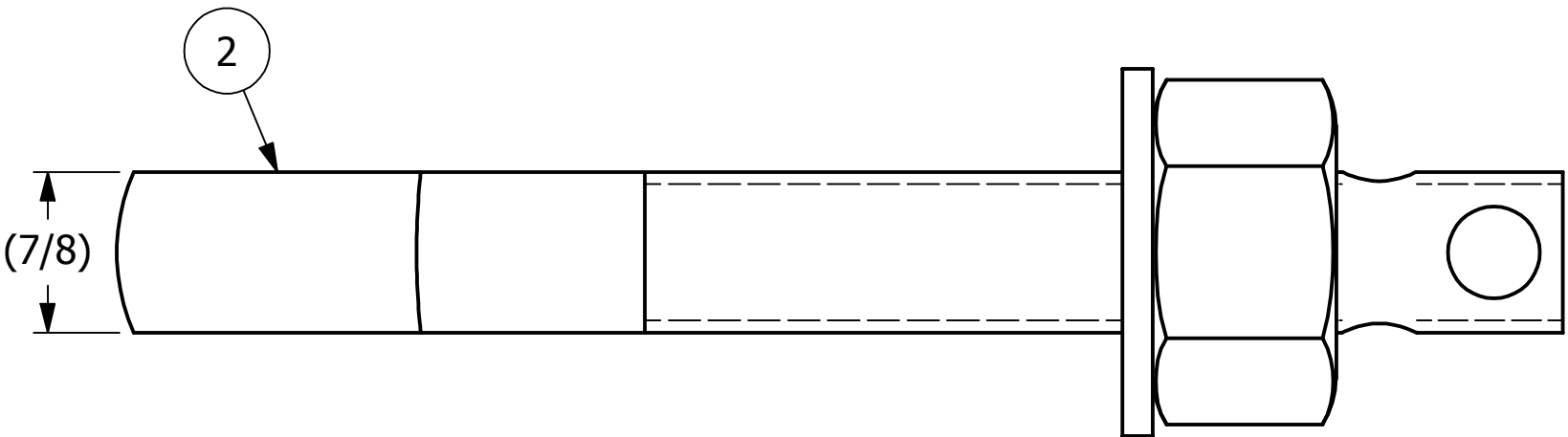
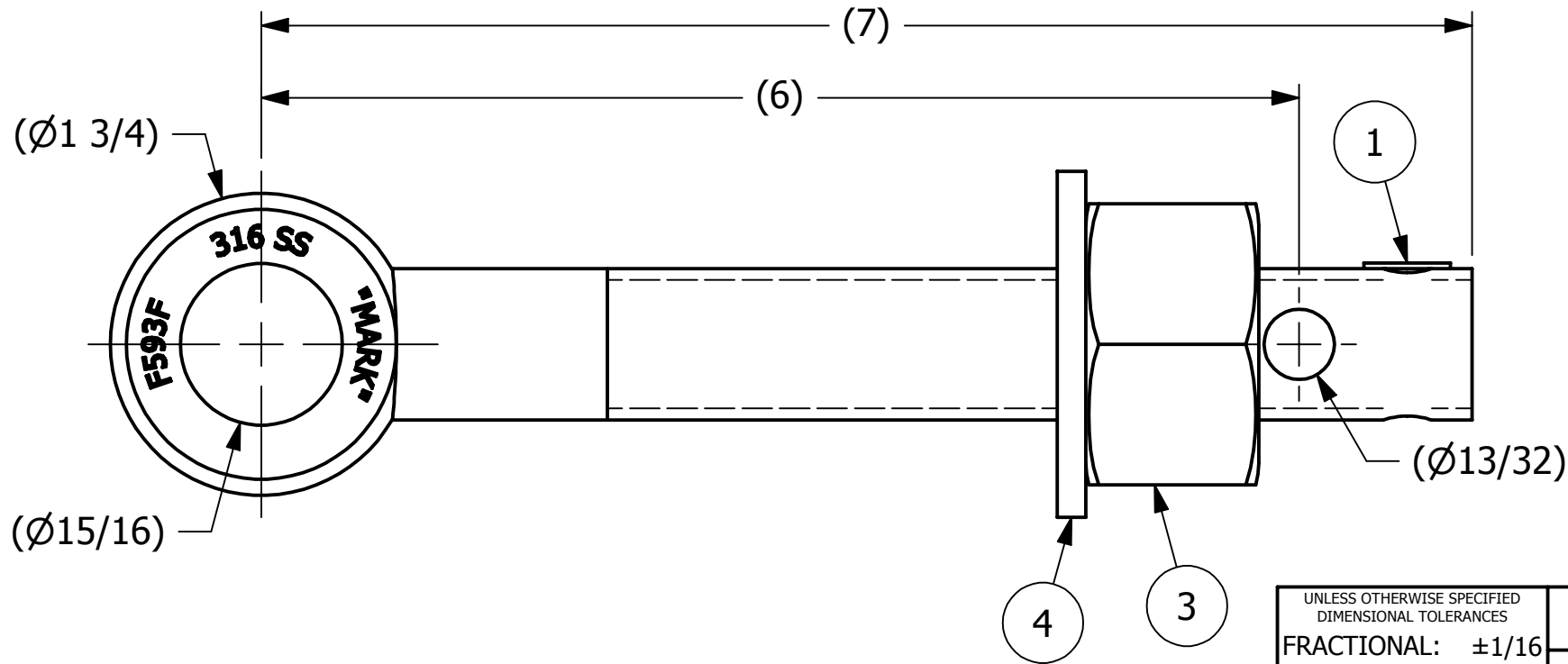


2		1		
NO	PART NAME	PART#	REQ'D	MATERIAL
1	HUCK RIVET 1/4"X13/16"	A16204	1	304 SS
2	EYEBOLT 7/8"X7"	EBR787HS6R	1	316 SS
3	HEAVY HEX NUT 7/8"-9	N78XS6S	1	416 SS
4	FLAT WASHER 7/8" SAE	WASH78S6	1	316 SS



ISOMETRIC VIEW



B	JG	6-15-16	WASH78S6 WAS WASH78S4
A	CHL	11-26-01	REPLACED SN14S W/ A16204
REV	BY	DATE	DESCRIPTION

UNLESS OTHERWISE SPECIFIED DIMENSIONAL TOLERANCES FRACTIONAL: $\pm 1/16$ X.XX: $\pm .03$ X.XXX: $\pm .015$ ANGULAR: $\pm 1^\circ$ DEBURR ALL SHARP EDGES. ALL MACHINED SURFACES TO HAVE A 125 RMS FINISH UNLESS NOTED OTHERWISE. THIRD ANGLE PROJECTION	DRAWN BY:	FOD
	CHECKED BY:	SAB
	PROTOTYPE BY:	FOD
	PROTOTYPE DATE:	6/8/2000
	APPROVED FOR PRODUCTION BY:	SAB
	PRODUCTION DATE:	6/8/2000

PART NAME: EYEBOLT ASSEMBLY 7/8"X7"		
MATERIAL: SEE BOM		
PROJECT #:	SHEET #: 1 OF 1	SCALE: 1:1
DRAWING #:	PART #:	
B14700	EB787XHAS6	