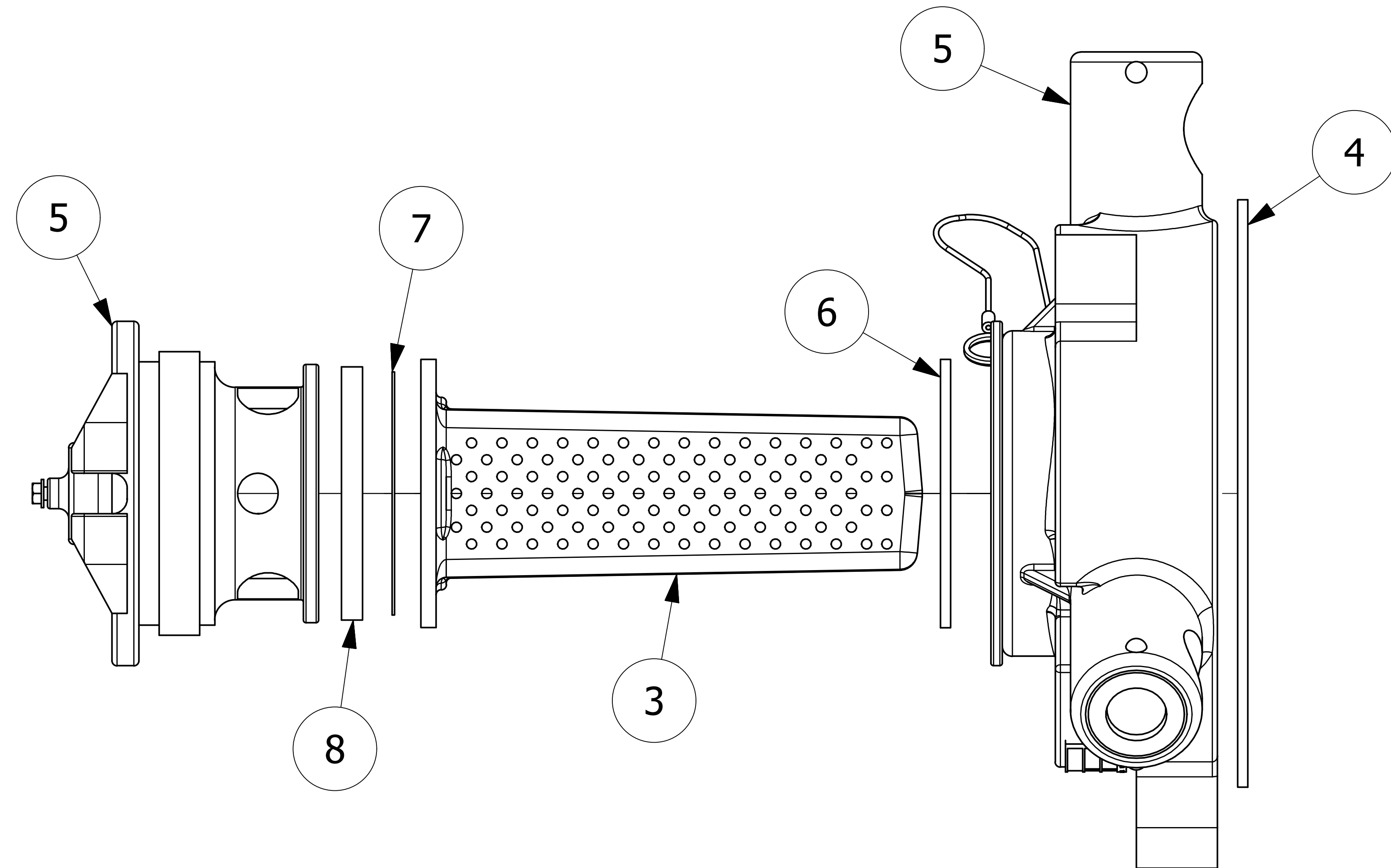


| NO. | PART NAME                      | PART #    | REQ'D | MATERIAL          |
|-----|--------------------------------|-----------|-------|-------------------|
| 1   | ID PLATE 3" X 3/4"             | A15152    | .5    | ALUMINUM          |
| 2   | DRIVE SCREW TYPE U #2 X 1/8"   | DR218     | 2     | 18-8 SS           |
| 3   | SURGE PROTECTOR                | DSP3313   | 1     | NORYL             |
| 4   | QUICK INSPECT FLANGE GASKET    | FG550N    | 1     | WHITE FDA NITRILE |
| 5   | QUICK INSPECT SAFETY VENT      | QI261BSA  | 1     | BLACK NORYL       |
| 6   | QI RETAINER GASKET             | QI261G2   | 1     | WHITE FDA NITRILE |
| 7   | QI RUPTURE DISK GASKET         | QI261RDG2 | 1     | WHITE FDA NITRILE |
| 8   | RUPTURE DISC (SOLD SEPARATELY) |           |       |                   |



- NOTES:
1. CUSTOMERS RESPONSIBILITY FOR COMPATIBILITY OF COMMODITY.
  2. AAR APPROVAL # PRD-162102.
  3. SEE DOCUMENT Q-2.14 FOR MARKING PROCEDURE.
  4. FASTEN ID PLATE WITH DRIVE SCREWS.

|     |     |          |   |
|-----|-----|----------|---|
| N   | TAK | 1/26/21  | REPLACED QAP5A-1 W/ Q-2.14; UPDATED TITLE BLOCK |
| M   | JG  | 1/20/17  | AAR APPROVAL # WAS SRD-063000                   |
| L   | TAK | 8/26/13  | ADDED A15152, DR218 & QAP5A-1 NOTE              |
| K   | CHL | 11/20/09 | CHANGED PART# WAS QI261A                        |
| J   | ACC | 8/10/06  | UPDATED DESCRIPTION AND AAR APPROVAL#           |
| I   | MRC | 8/31/00  | REMOVED CHART, UPDATED TO CURRENT STANDARDS     |
| REV | BY  | DATE     | DESCRIPTION                                     |

|  |                             |          |
|--|-----------------------------|----------|
| UNLESS OTHERWISE SPECIFIED DIMENSIONAL TOLERANCES FRACTIONAL: ±1/16                            | DRAWN BY:                   | CLH      |
| X.XX: ±.03   | CHECKED BY:                 | ACC      |
| X.XXX: ±.015   | PROTOTYPE DATE:             | 2/9/1998 |
| ANGULAR: ±1°   | APPROVED FOR PRODUCTION BY: | CLH      |
| DEBURR ALL SHARP EDGES. ALL MACHINED SURFACES TO HAVE A 125 RMS FINISH UNLESS NOTED OTHERWISE. | PRODUCTION DATE:            | 2/9/1998 |
| THIRD ANGLE PROJECTION   | SIZE:                       | E        |
|  | DRAWING #:                  | 8565     |

**SALCO PRODUCTS, INC.**

**QUICK INSPECT SAFETY VENT**

MATERIAL: **SEE BOM**

PROJECT #: **RD940810** SHEET #: **1 OF 1** SCALE: **1 : 1**

PART #: **QI26102A**