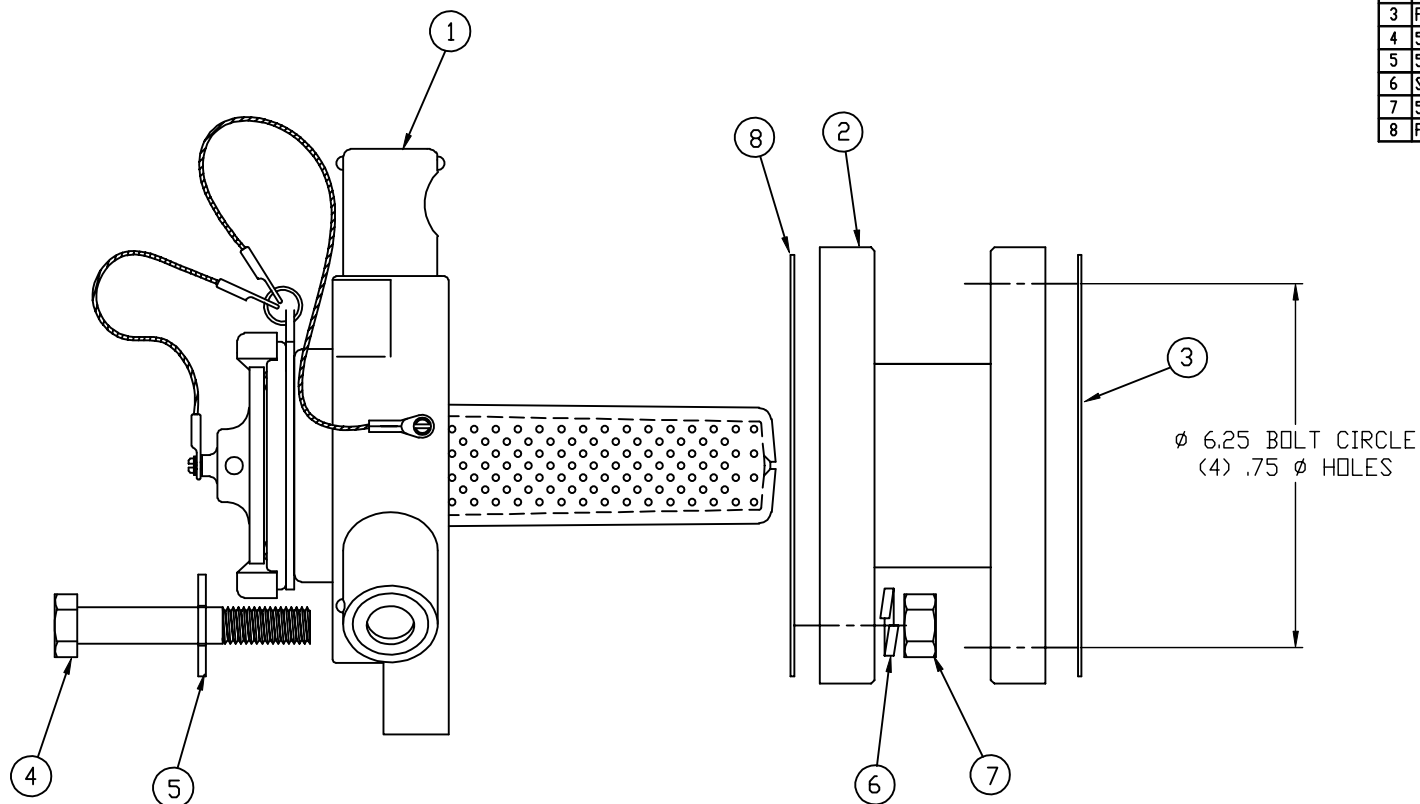



NO	PART NAME	PART #	REQ	MATERIAL
1	SAFETY VENT HOUSING	QI2613A	1	SEE BOM
2	FLANGE ADAPTOR	QI625F	1	316 SS
3	FLANGE GASKET	FG7E	1	BLACK EPDM
4	5/8"-11 X 4" HHCS	SV584FBS	3	18-8 SS
5	5/8" SAE PLAIN WASHER	SV58WS	3	18-8 SS
6	SPLIT LOCK WASHER	SV58SLW	3	18-8 SS
7	5/8"-11 HEX NUT	SV58N	3	CS Z/P
8	FLANGE GASKET	FG50E	0	BLACK EPDM



# GENERAL NOTES:

1. MOUNTING FLANGE TO AAR SPECIFICATION E11B.
2. APPROXIMATE TOTAL HEIGHT (BOTTOM OF FLANGE TO TOP OF COMBINATION UNIT) = 8 3/8"
3. SURGE PROTECTOR MATERIAL IS WHITE NORYL
4. CUSTOMER RESPONSIBILITY FOR COMAPTIBILITY OF COMMODITY
5. RUPTURE DISK PRESSURE INDICATED BY CUSTOMER
6. AAR APPROVAL NO. SRD-063000

G	WRB	12/28/06	ADDED AAR APPROVAL NOTE
F	MRC	9/15/00	DRAWING WAS A CHART, DWG # WAS D8893
REV	BY	DATE	DESCRIPTION
			<div><div></div><div><b>SALCO PRODUCTS, INC.</b></div><div>2D</div></div>
UNLESS OTHERWISE SPECIFIED DIMENSIONAL TOLERANCES			
FRACTIONAL	±1/16	DRAWN BY: CLH	CHKD BY: SCALE: 1:1 APPROVAL DATE: 2/10/98
X.XX	±0.03	MATERIAL: SEE BOM	
X.XXX	±0.015	PART NAME: QI SAFETY VENT HOUSING W/6.25 MOUNTING FLANGE ASSEMBLY & BLACK EPDM GASKETS	
ANGULAR	±1°		
THIS DRAWING IS THE PROPERTY OF SALCO PRODUCTS INC. IT IS TO BE USED FOR THE PURPOSES SPECIFIED AND NOT BE COPIED, REPRODUCED, OR USED IN ANY MANNER WITHOUT THE WRITTEN PERMISSION OF SALCO PRODUCTS INC.			
THIRD ANGLE PROJECTION		PROJECT # 940801	APPROVED FOR PRODUCTION: CLH
		DRAWING # D15006	PART # QIF6253A