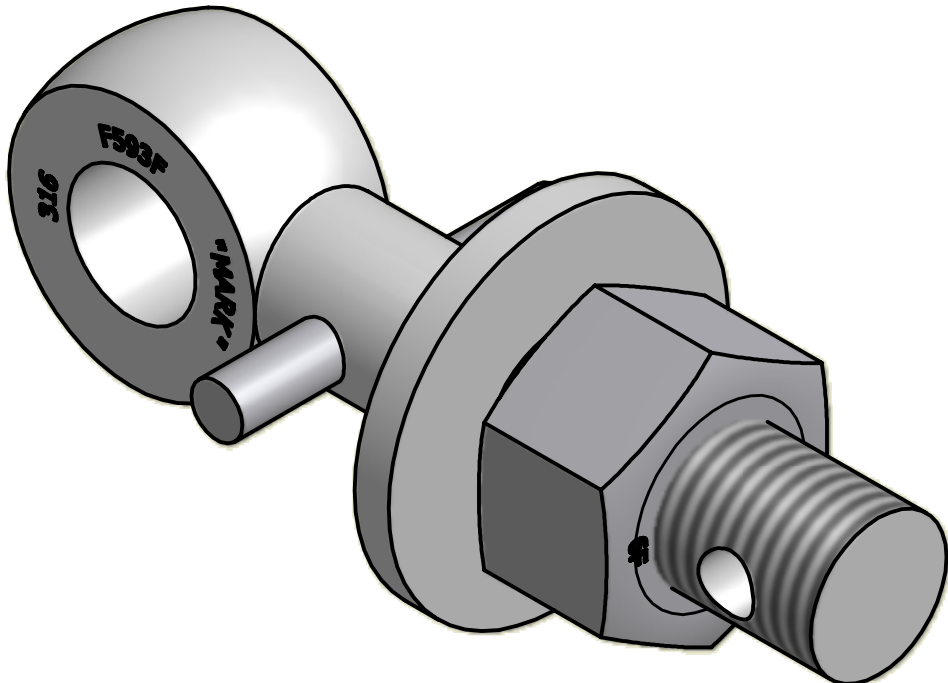



NO.	PART NAME	PART #	REQ'D	MATERIAL
1	EYEBOLT 1"X5"	EBR15H2S6P	1	316SS
2	HEAVY HEX NUT 1"-8	N1XS6	1	416 SS
3	FLAT WASHER 1"	WASH1S6T	1	316 SS
4	PIN 3/8"X2 1/2"	PIN375SS	1	316 SS



ISOMETRIC VIEW

UNLESS OTHERWISE SPECIFIED DIMENSIONAL TOLERANCES		DRAWN BY:	CHL	A CHL 4-13-07 NEW PART ADDED TO SYSTEM	
FRACTIONAL: ±1/16		CHECKED BY:	PJG	REV BY DATE DESCRIPTION	
X.XX: ±.03		PROTOTYPE BY:	CHL	 PART NAME: EYEBOLT ASSEMBLY 1"X5"	
X.XXX: ±.015		PROTOTYPE DATE:	3/21/2007		
ANGULAR: ±1°		APPROVED FOR PRODUCTION BY:	PJG	MATERIAL: SEE BOM	
THIS PRINT, PROPERTY OF SALCO PRODUCTS INC., CONTAINS PROPRIETARY INFORMATION AND MUST NOT BE COPIED, REPRODUCED, OR USED DETRIMENTALLY TO OUR INTEREST.		PRODUCTION DATE:	4/13/2007	PROJECT #: WAG0389	SHEET #: 1 OF 1
		THIRD ANGLE PROJECTION		DRAWING #: B23339	PART #: EB15XH2A2S6P