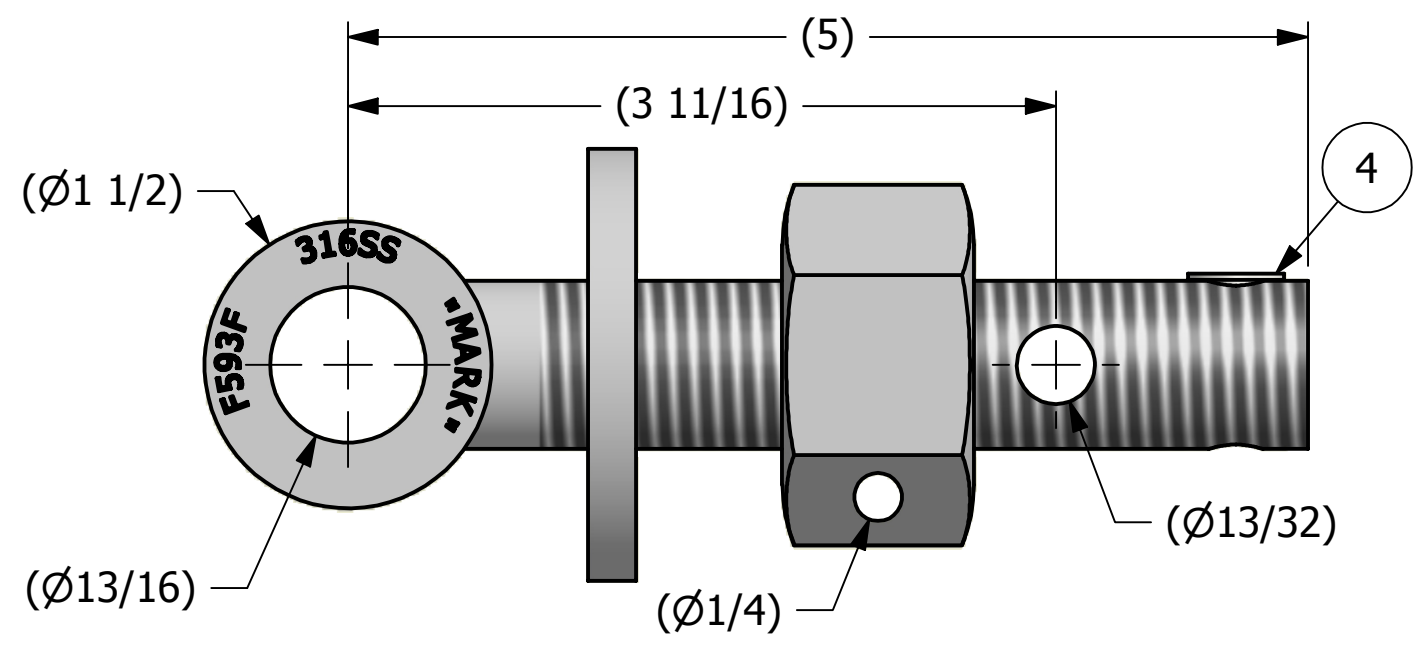
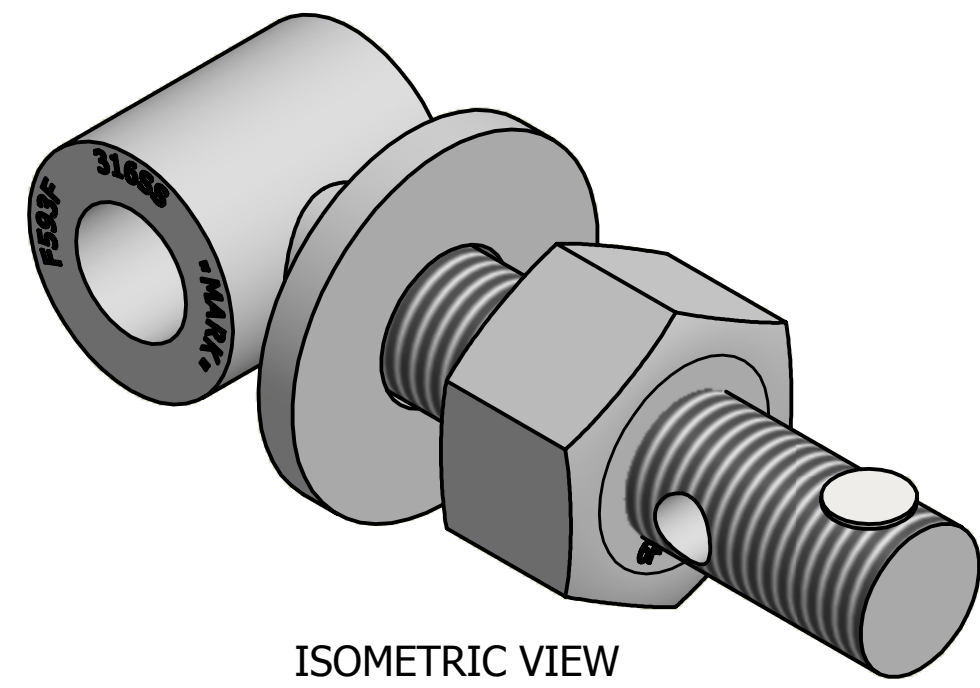
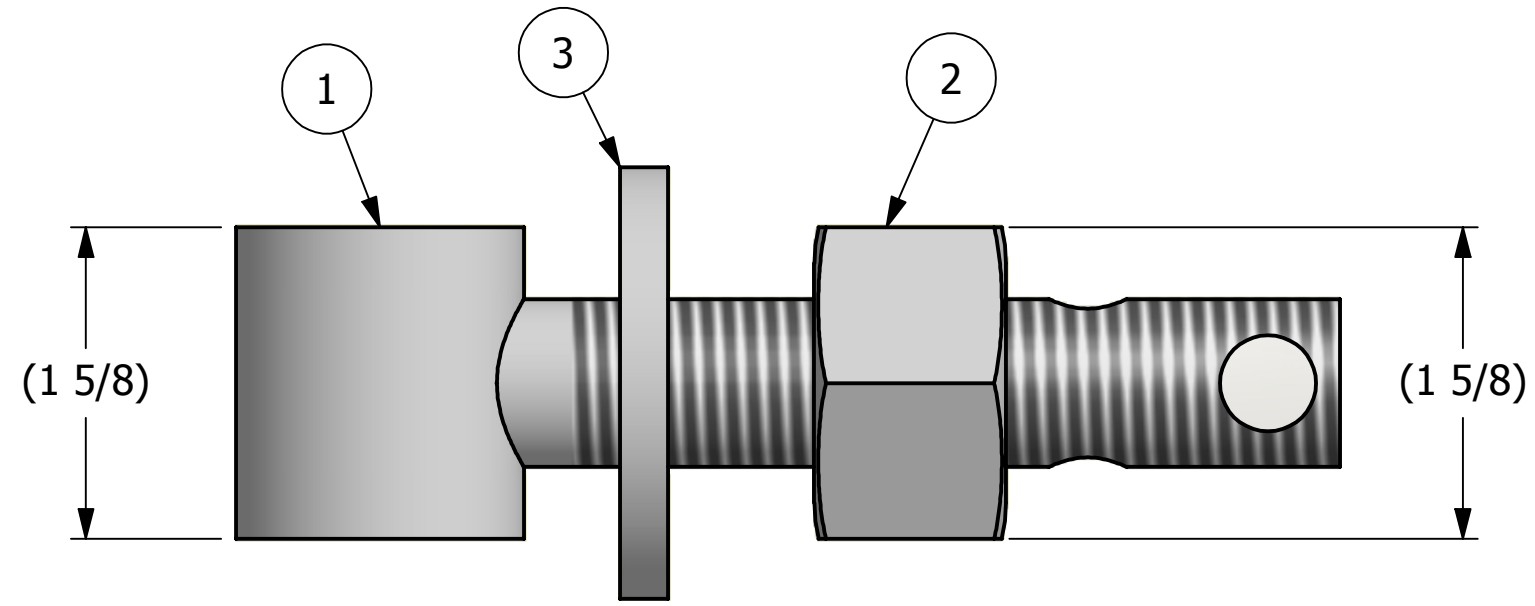


NO.	PART NAME	PART#	REQ'D	MATERIAL
1	EYEBOLT 7/8"X5"	EBR785THS6R	1	316 SS
2	HEAVY HEX NUT 7/8"-9	N78XS6SH	1	416 SS
3	FLAT WASHER 7/8"	WASH78S4T	1	304 SS
4	HUCK RIVET 1/4"X13/16"	A16204	1	304 SS



A	WRB	3-23-12	NEW PART ADDED TO SYSTEM
REV	BY	DATE	DESCRIPTION
SALCO PRODUCTS, INC.			
PART NAME: EYEBOLT ASSEMBLY 7/8"X5"			
MATERIAL: SEE BOM			
PROJECT #: 120316		SHEET #: 1 OF 1	SCALE: 1:1
DRAWING #: B32789		PART #: EB785X2THHAS6	

UNLESS OTHERWISE SPECIFIED DIMENSIONAL TOLERANCES	DRAWN BY:	GDS
FRACTIONAL: $\pm 1/16$	CHECKED BY:	WRB
X.XX: $\pm .03$	PROTOTYPE BY:	GDS
X.XXX: $\pm .015$	PROTOTYPE DATE:	3/23/2012
ANGULAR: $\pm 1^\circ$	APPROVED FOR PRODUCTION BY:	WRB
THIS PRINT, PROPERTY OF SALCO PRODUCTS INC., CONTAINS PROPRIETARY INFORMATION AND MUST NOT BE COPIED, REPRODUCED, OR USED DETRIMENTALLY TO OUR INTEREST.	PRODUCTION DATE:	3/23/2012
THIRD ANGLE PROJECTION		

Technical drawing of an eyebolt assembly with dimensions and callouts. The drawing includes a side view, an end view, and an isometric view. Dimensions are provided in inches, including diameters and lengths. Callouts 1 through 5 identify the eye, nut, washer, rivet, and nut respectively. The drawing is framed by dimension lines labeled A, B, and 4.