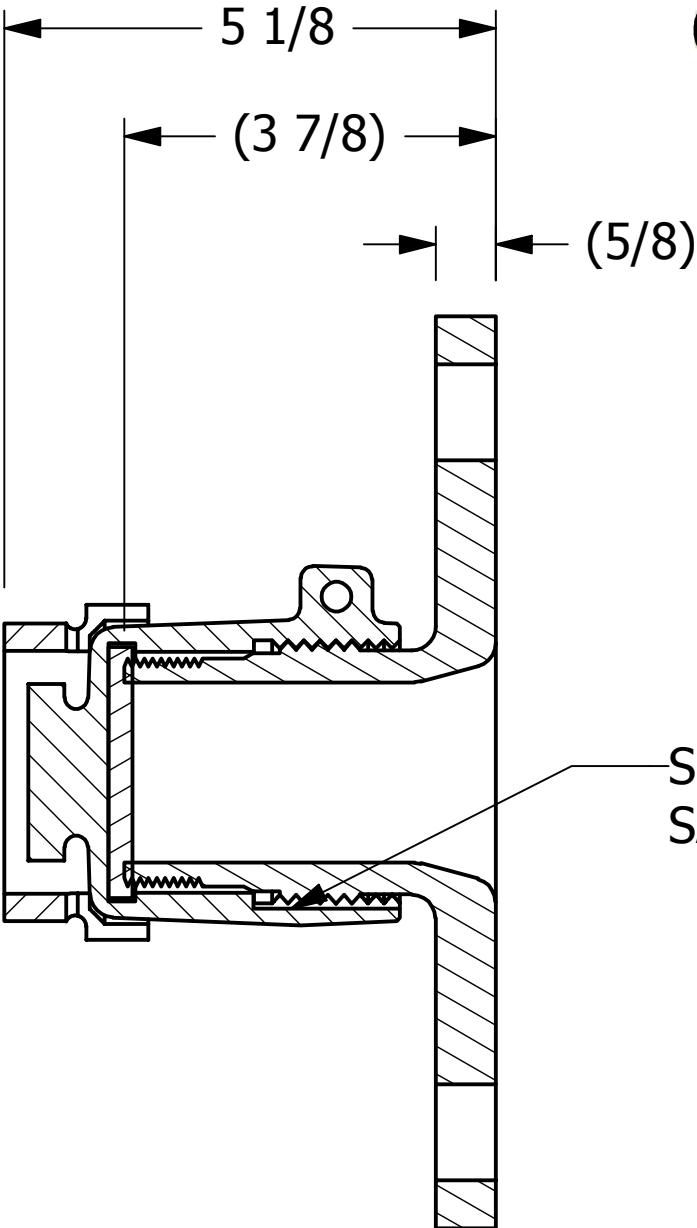
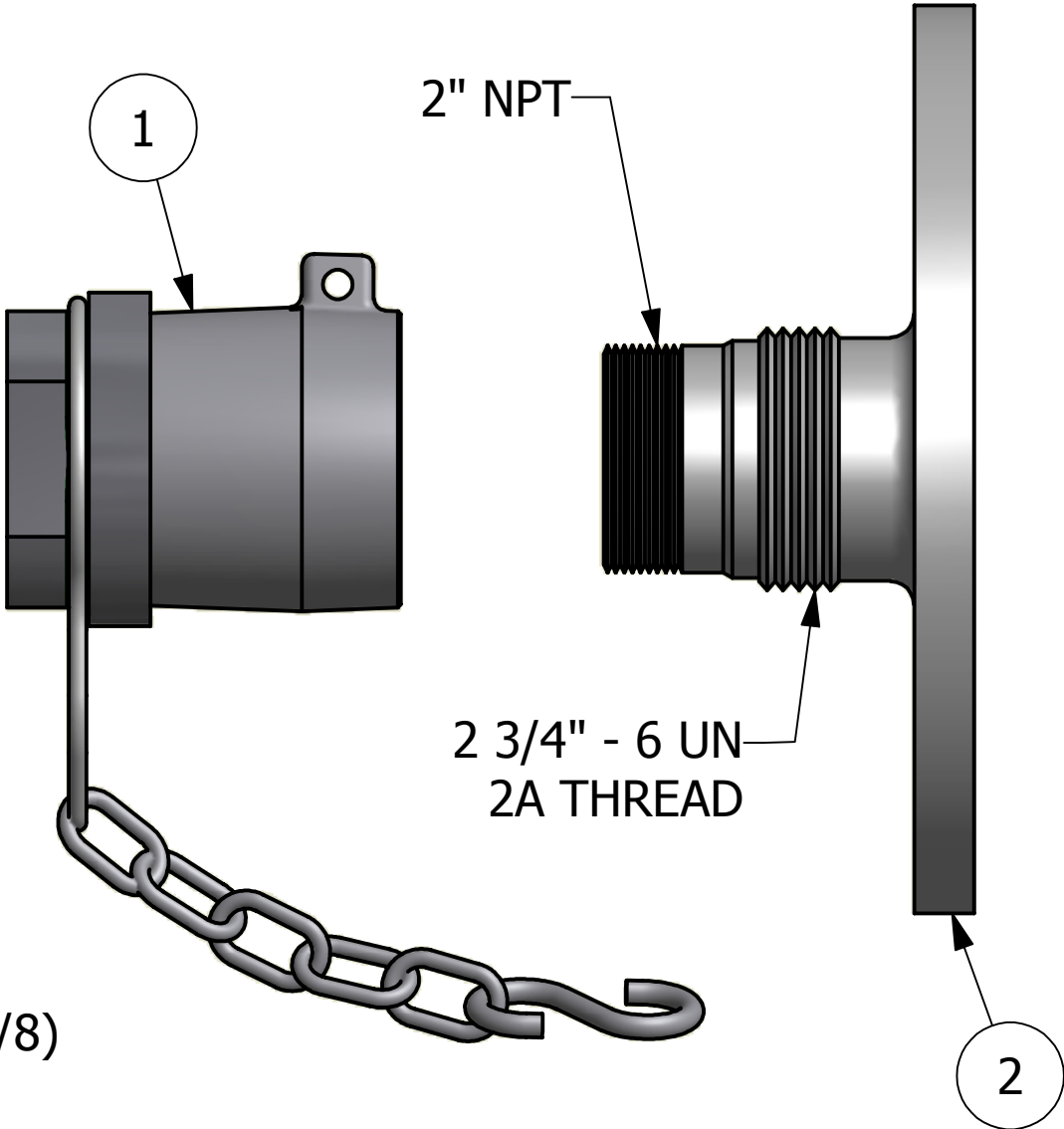
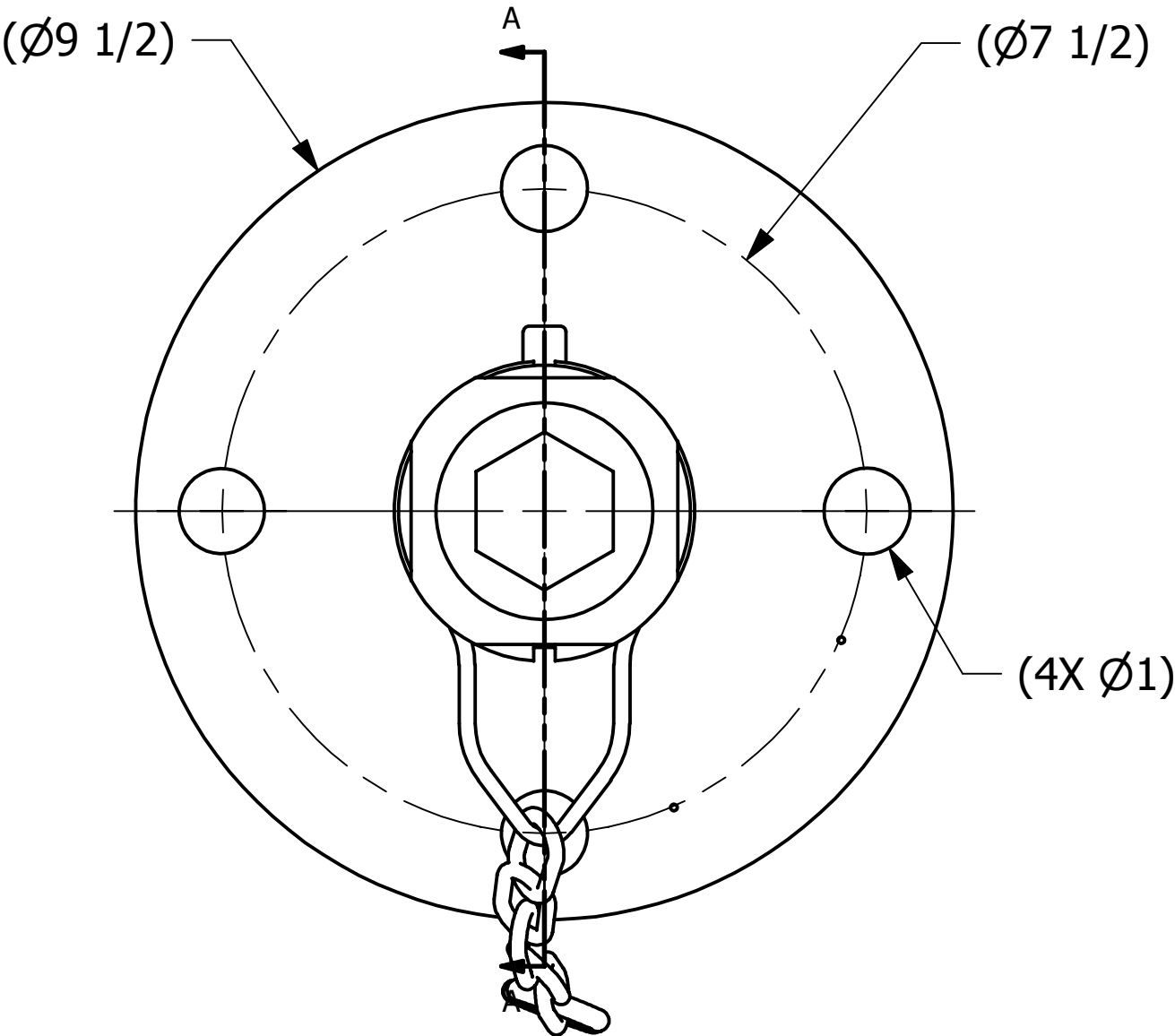



NO.	PART NAME	PART #	REQ'D	MATERIAL
1	QUICK CONNECT CAP 2" THREAD ON	TE20SDLPDC07A	1	SEE NOTE
2	TOP FITTING ASSEMBLY 2" FLANGE	TE2S75FAS	1	316L SS



NOTE:
CASTINGS ARE 316L SS GRADE CF-3M ASTM#743.

SECTION A-A

UNLESS OTHERWISE SPECIFIED DIMENSIONAL TOLERANCES	DRAWN BY:	GS
FRACTIONAL: $\pm 1/16$	CHECKED BY:	CHL
X.XX: $\pm .03$	PROTOTYPE BY:	GS
X.XXX: $\pm .015$	PROTOTYPE DATE:	5/7/2012
ANGLE: $\pm 1^\circ$	APPROVED FOR PRODUCTION BY:	CHL
THIS PRINT, PROPERTY OF SALCO PRODUCTS INC, CONTAINS PROPRIETARY INFORMATION AND MUST NOT BE COPIED, REPRODUCED, OR USED DETRIMENTALLY TO OUR INTEREST.	PRODUCTION DATE:	5/17/2012
THIRD ANGLE PROJECTION		

A	GS	5-17-12	UPDATED TO NETWORK
REV	BY	DATE	DESCRIPTION
 SALCO PRODUCTS, INC.			
PART NAME: TOP FITTING ASSEMBLY 2" FLANGED			
MATERIAL: SEE BOM			
PROJECT #: 120505		SHEET #: 1 OF 1	SCALE: 1:2
DRAWING #: C33151		PART #: TE20S75DLP07A	