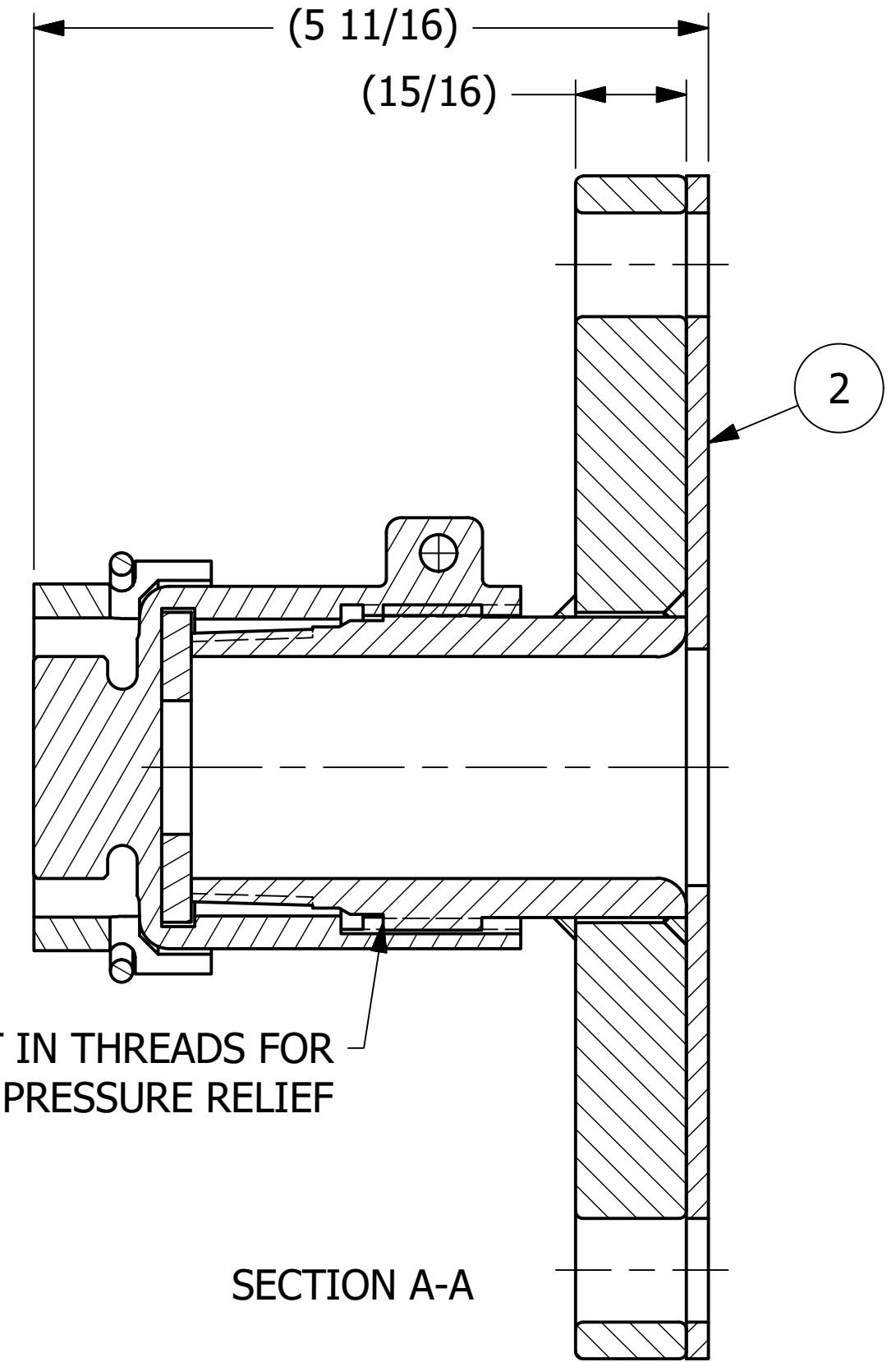
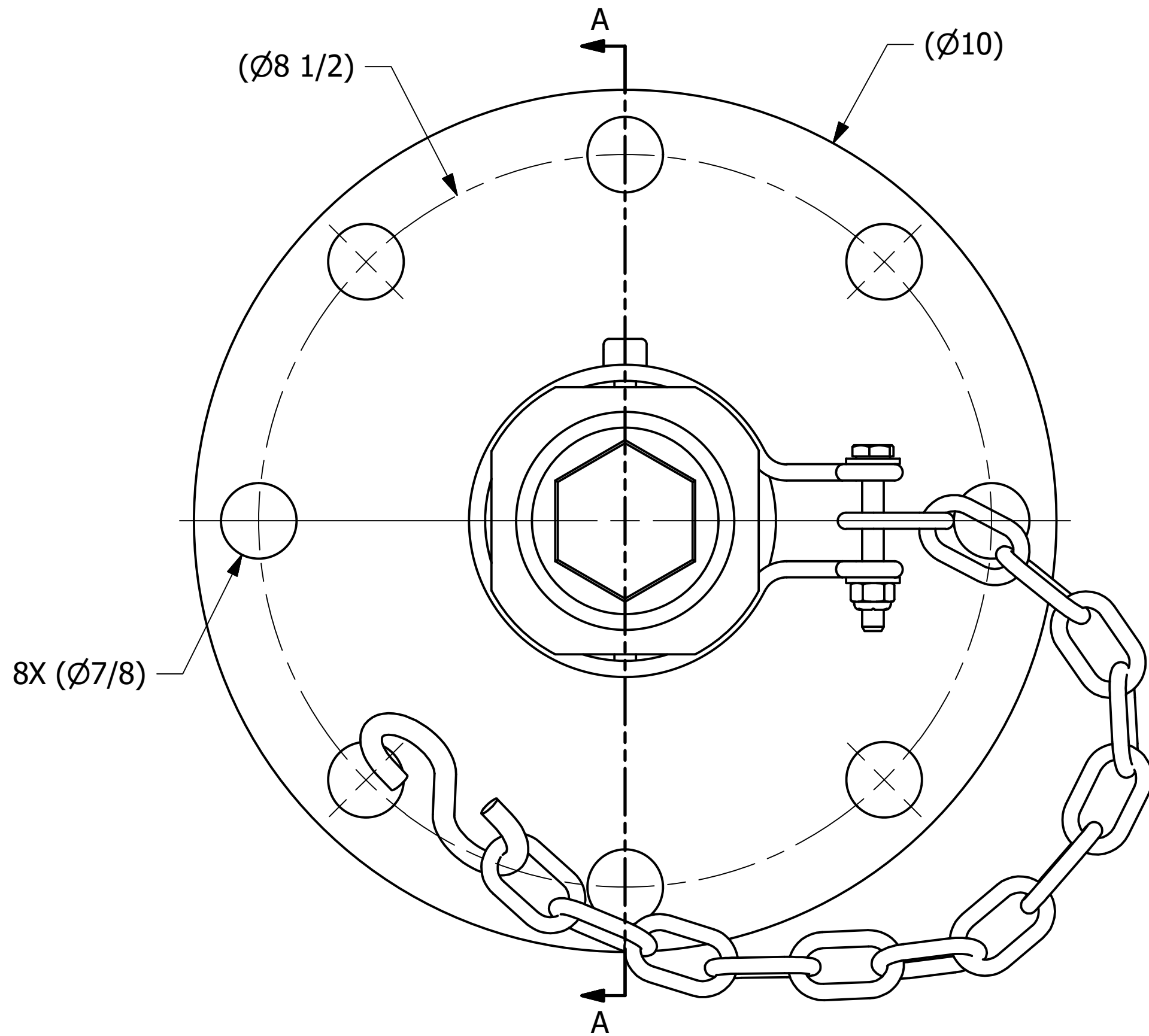


NO.	PART NAME	PART#	REQ'D	MATERIAL
1	QUICK CONNECT CAP 2" THREAD ON	TE20SDLPDC07A	1	316L SS
2	QUICK CONNECT 2" FLANGE	TE2SFASW07	1	316L SS



SLOT CUT IN THREADS FOR SAFETY PRESSURE RELIEF

SECTION A-A

REV	BY	DATE	DESCRIPTION
E	TAK	12/9/20	UPDATED TITLE BLOCK & VIEW TO SHOW GASKET ID
D	GS	7/10/12	REPLACED TE20S416DLPDC07A WITH TE20SDLPDC07A
C	GS	7/9/12	UPDATED TE20S416DLPDC07A.
B	GS	7/2/12	REPLACED TE20SDLPDC07A WITH TE20S416DLPDC07A.
A	GS	5/11/12	UPDATED TO NETWORK

UNLESS OTHERWISE SPECIFIED DIMENSIONAL TOLERANCES FRACTIONAL: $\pm 1/16$ X.XX: $\pm .03$ X.XXX: $\pm .015$ ANGLE: $\pm 1^\circ$ DEBURR ALL SHARP EDGES. ALL MACHINED SURFACES TO HAVE A 125 RMS FINISH UNLESS NOTED OTHERWISE. THIRD ANGLE PROJECTION	DRAWN BY: CHL	CHECKED BY: WRB	PROTOTYPE DATE: 2/10/2012	APPROVED FOR PRODUCTION BY: CHL	PRODUCTION DATE: 5/11/2012	SIZE: C	DRAWING #: 32504
---	---------------	-----------------	---------------------------	---------------------------------	----------------------------	---------	------------------

**SALCO PRODUCTS, INC.**

PART NAME: **TOP FITTINGS ASSEMBLY 2" FLANGED**

MATERIAL: **SEE BOM**  
PROJECT #: **120102** SHEET #: **1 OF 1** SCALE: **3:4**

PART #: **TE2SDLP07FAW**