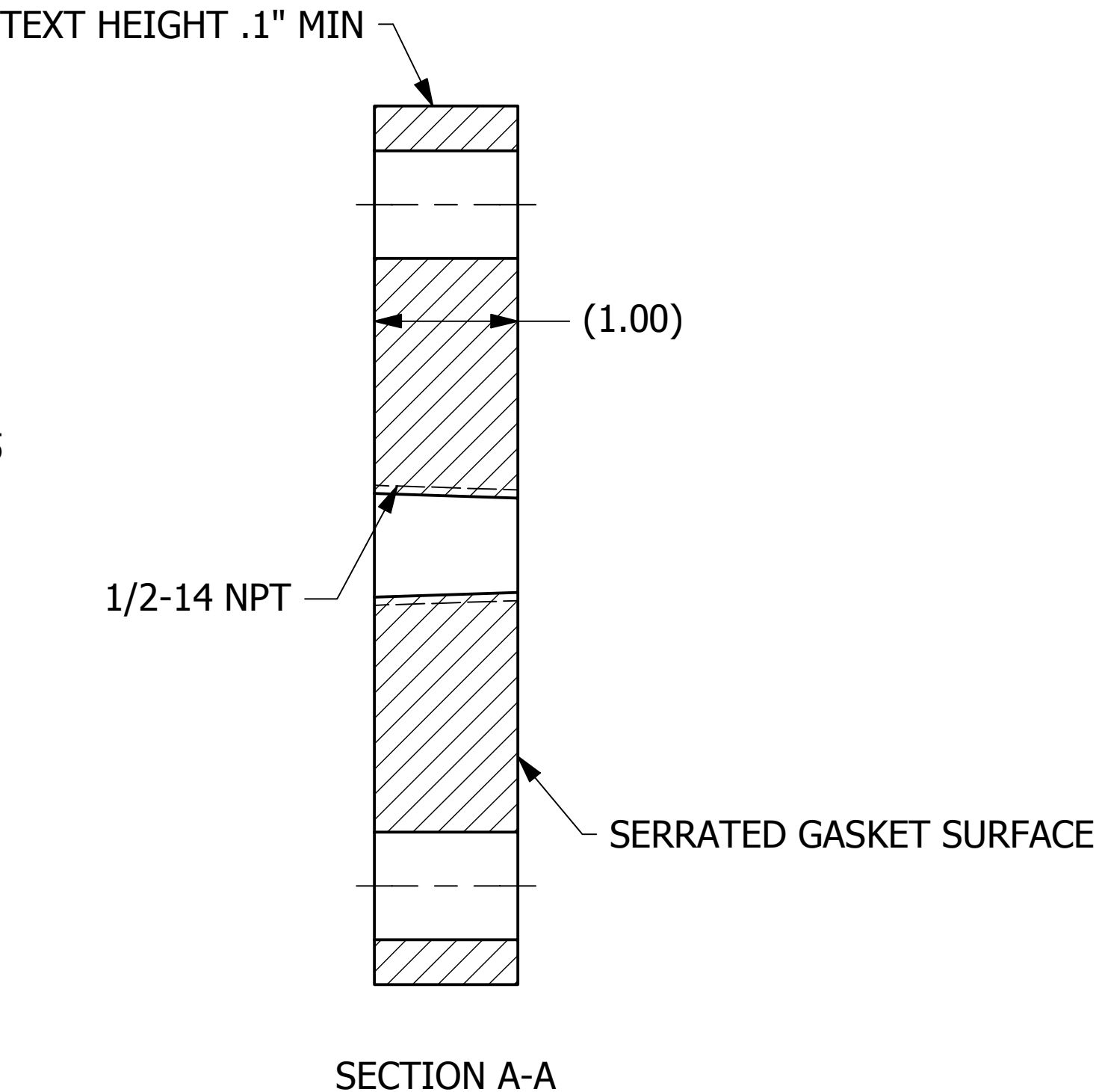
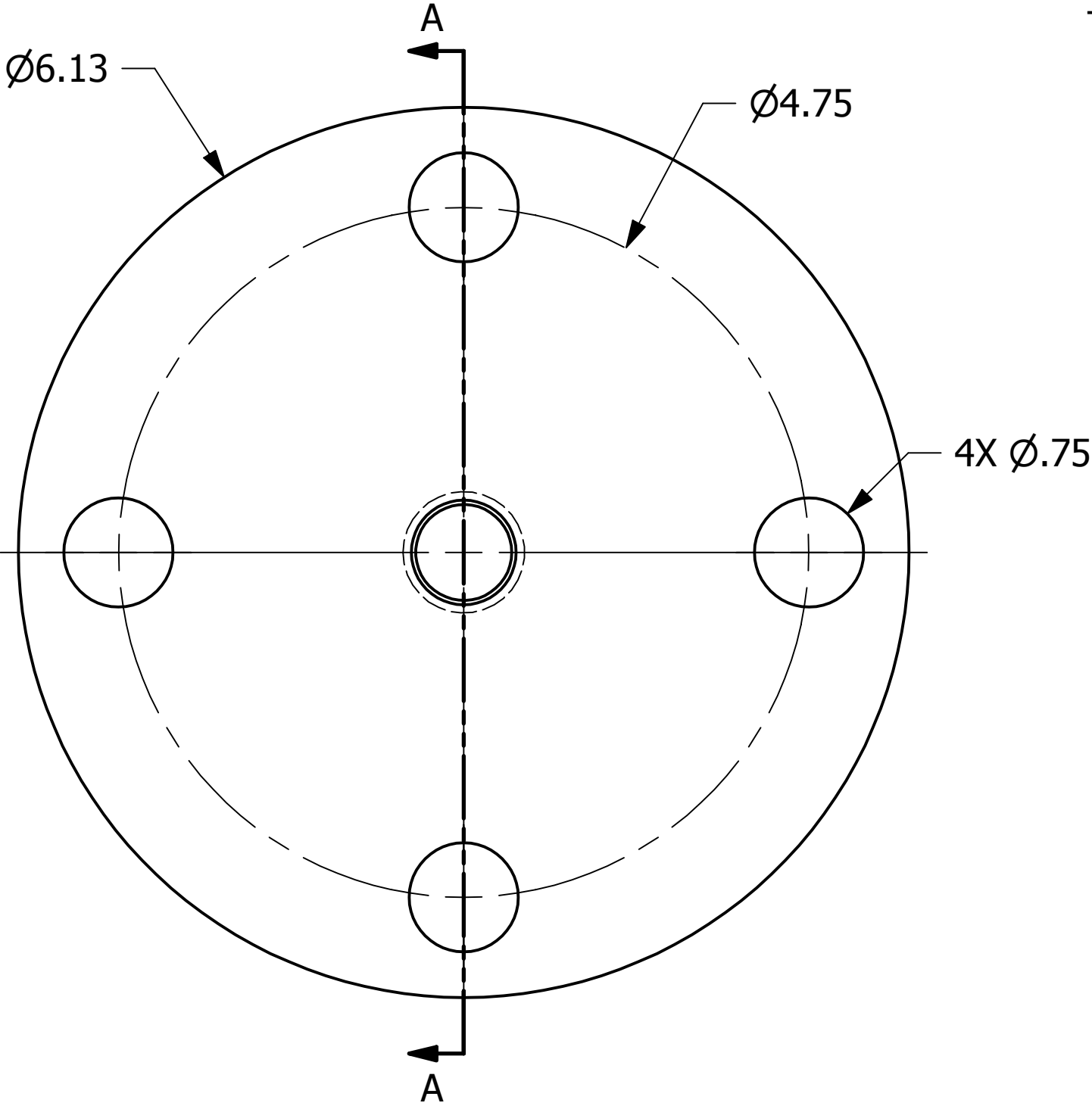


NO.	PART NAME	PART#	REQ'D	MATERIAL
1	SHEET 1"	SHT1UHR	.28 SQ FT	SEE NOTES



- NOTES:
- 1. SEE DSS 1 FOR MATERIAL SPEC.
  - 2. SEE QAP5A-1 FOR MARKING PROCEDURES.

UNLESS OTHERWISE SPECIFIED DIMENSIONAL TOLERANCES FRACTIONAL: ±1/16 X.XX: ±.03 X.XXX: ±.015 ANGLE: ±1° DEBURR ALL SHARP EDGES. ALL MACHINED SURFACES TO HAVE A 125 RMS FINISH UNLESS NOTED OTHERWISE. THIRD ANGLE PROJECTION	DRAWN BY:	CHL
	CHECKED BY:	VD
	PROTOTYPE BY:	CHL
	PROTOTYPE DATE:	11/18/2011
	APPROVED FOR PRODUCTION BY:	CHL
	PRODUCTION DATE:	6/29/2012

A	TAK	6-29-12	ADDED NEW PART TO NETWORK
REV	BY	DATE	DESCRIPTION
 <b>SALCO PRODUCTS, INC.</b> <i>Hazarsolve® Division</i>			
PART NAME: <b>AIR INLET FLANGE 2"X1/2" 150 LB</b>			
MATERIAL: <b>SEE BOM/NOTES</b>			
PROJECT #: <b>111031</b>		SHEET #: <b>1 OF 1</b>	SCALE: <b>1:1</b>
DRAWING #: <b>C32005</b>		PART #: <b>HS2050AIFP</b>	