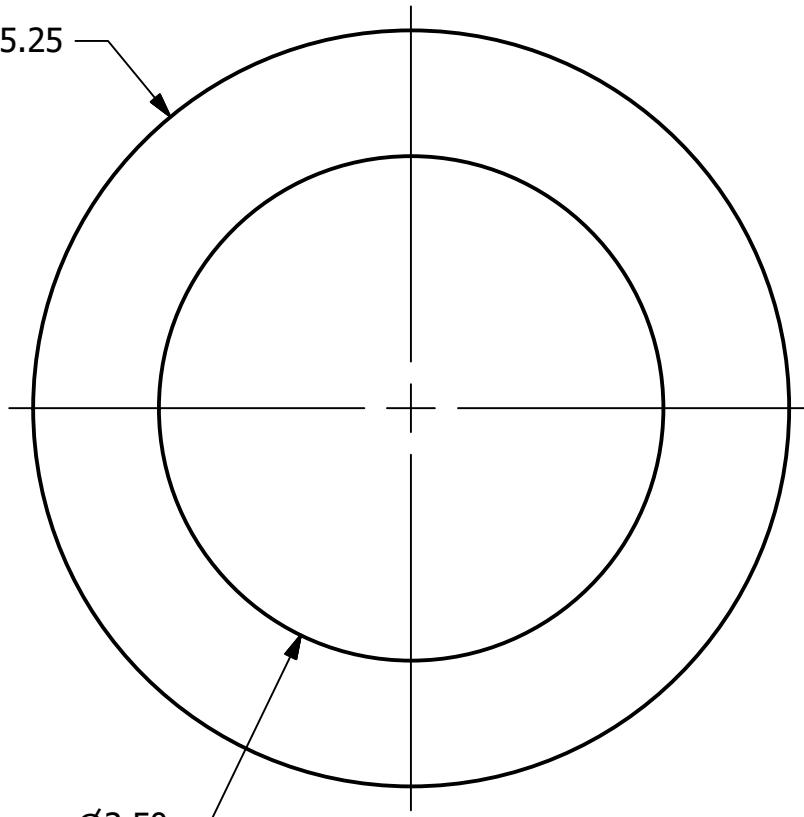


Ø5.25



Ø3.50  
THRU

.25



D	WEB	8/9/21	ADDED Q-2.14.1 NOTE; UPDATED TITLE BLOCK
C	BRG	7/17/09	CHANGED THICKNESS BACK TO .250
B	PJG	7/9/09	THICKNESS WAS .250
A	BRG	7/9/09	NEW PART ADDED TO THE SYSTEM
REV	BY	DATE	DESCRIPTION

NOTE:  
MUST FOLLOW Q-2.14.1.

UNLESS OTHERWISE SPECIFIED DIMENSIONAL TOLERANCES FRACTIONAL: ±1/16 X.XX: ±.03 X.XXX: ±.015 ANGULAR: ±1° DEBURR ALL SHARP EDGES. ALL MACHINED SURFACES TO HAVE A 125 RMS FINISH UNLESS NOTED OTHERWISE. THIRD ANGLE PROJECTION 	DRAWN BY:	BRG
	CHECKED BY:	PJG
	PROTOTYPE DATE:	7/9/2009
	APPROVED FOR PRODUCTION BY:	PJG
	PRODUCTION DATE:	7/9/2009
	SIZE:	A
DRAWING #:	27167	

PART NAME:		
BOTTOM OUTLET CAP GASKET 4"		
MATERIAL: GYLON 3545		
PROJECT #:	WAG0711	SHEET #: 1 OF 1
SCALE:	3:4	
PART #:		
BCG3553		