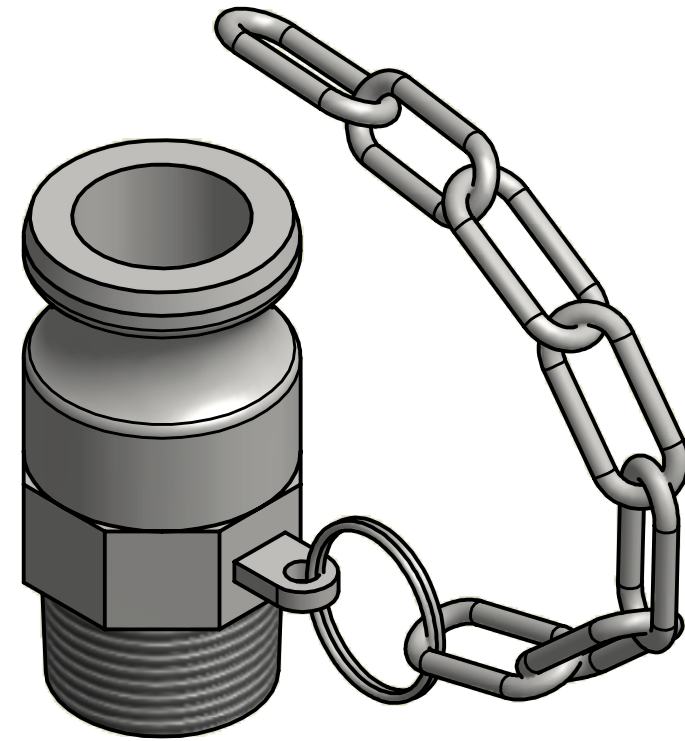
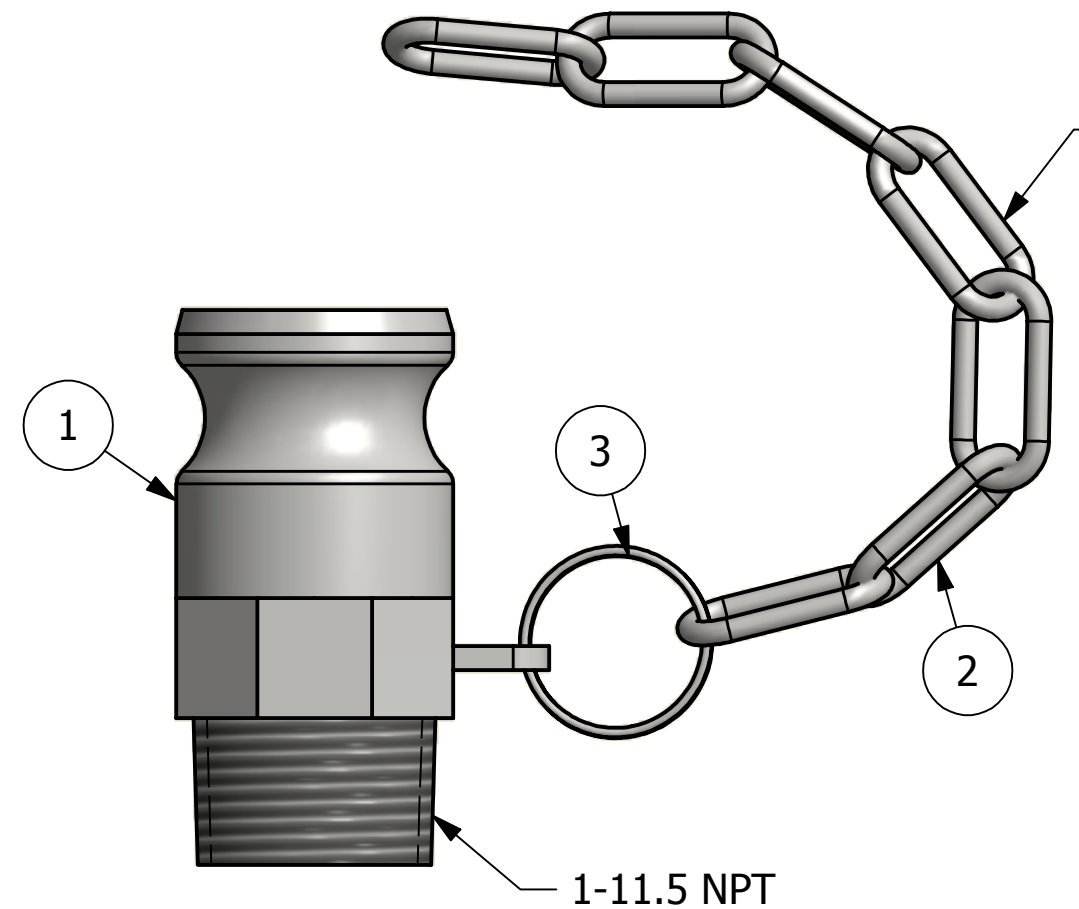


NO.	PART NAME	PART #	REQ'D	MATERIAL
1	ADAPTER 1"	K1SMP	1	316 SS
2	CHAIN LINK 1/8"	SC18S	8	18-8 SS
3	SPLIT RING 1"	SCA115R4S	1	304 SS



ISOMETRIC VIEW



7 LINKS ACTUAL
8TH LINK CUT
~8" IN LENGTH

1-11.5 NPT

REV	BY	DATE	DESCRIPTION
C	JG	8-28-15	REMOVED WELD, ADDED SCA115R4S
B	RJP	4-9-15	SC25S TO SC18S, REMOVED SC25SHS UPDATED TITLE BLOCK
A	DGP	01-03-14	RELEASED FOR PRODUCTION

UNLESS OTHERWISE SPECIFIED DIMENSIONAL TOLERANCES		DRAWN BY:	CHL
FRACTIONAL:	±1/16	CHECKED BY:	PJG
X.XX:	±.03	PROTOTYPE BY:	CHL
X.XXX:	±.015	PROTOTYPE DATE:	9/30/2009
ANGULAR:	±1°	APPROVED FOR PRODUCTION BY:	DGP
DEBURR ALL SHARP EDGES. ALL MACHINED SURFACES TO HAVE A 125 RMS FINISH UNLESS NOTED OTHERWISE.		PRODUCTION DATE:	1/3/2014
THIRD ANGLE PROJECTION			

SALCO PRODUCTS, INC.

PART NAME: **ADAPTER ASSEMBLY 1"**

MATERIAL: **SEE BOM**

PROJECT #: **WAG0733** SHEET #: **1 OF 1** SCALE: **1:1**

DRAWING #: **B27553** PART #: **K1SMPA**

THIS PRINT, PROPERTY OF SALCO PRODUCTS INC., CONTAINS PROPRIETARY INFORMATION AND MUST NOT BE COPIED, REPRODUCED, OR USED DETRIMENTALLY TO OUR INTEREST.