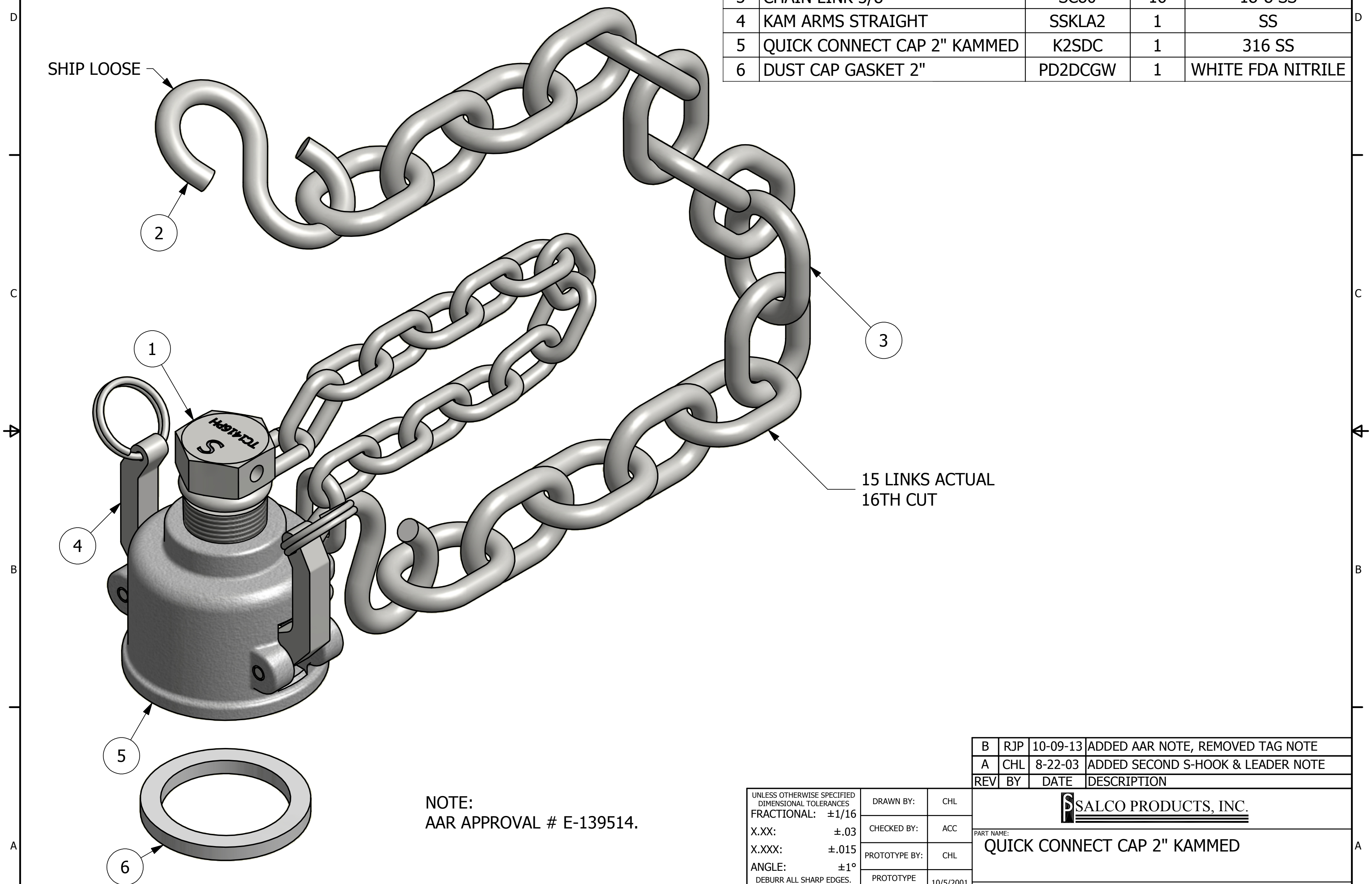


NO.	PART NAME	PART#	REQ'D	MATERIAL
1	PLUG ASSEMBLY 1"	TC1416PAH	1	416 SS
2	S-HOOK 3/8"X3 1/2"	SC38SHS	2	18-8 SS
3	CHAIN LINK 3/8"	SC80	16	18-8 SS
4	KAM ARMS STRAIGHT	SSKLA2	1	SS
5	QUICK CONNECT CAP 2" KAMMED	K2SDC	1	316 SS
6	DUST CAP GASKET 2"	PD2DCGW	1	WHITE FDA NITRILE



SHIP LOOSE

15 LINKS ACTUAL  
16TH CUT

NOTE:  
AAR APPROVAL # E-139514.

REV	BY	DATE	DESCRIPTION
B	RJP	10-09-13	ADDED AAR NOTE, REMOVED TAG NOTE
A	CHL	8-22-03	ADDED SECOND S-HOOK & LEADER NOTE

UNLESS OTHERWISE SPECIFIED DIMENSIONAL TOLERANCES FRACTIONAL: $\pm 1/16$ X.XX: $\pm .03$ X.XXX: $\pm .015$ ANGLE: $\pm 1^\circ$ DEBURR ALL SHARP EDGES. ALL MACHINED SURFACES TO HAVE A 125 RMS FINISH UNLESS NOTED OTHERWISE. THIRD ANGLE PROJECTION	DRAWN BY:	CHL
	CHECKED BY:	ACC
	PROTOTYPE BY:	CHL
	PROTOTYPE DATE:	10/5/2001
	APPROVED FOR PRODUCTION BY:	ACC
	PRODUCTION DATE:	10/5/2001

**SALCO PRODUCTS, INC.**

PART NAME:  
**QUICK CONNECT CAP 2" KAMMED**

MATERIAL: **SEE BOM**

PROJECT #: **000727** SHEET #: **1 OF 1** SCALE: **1:1**

DRAWING #: **C14893** PART #: **K2SDC2A**