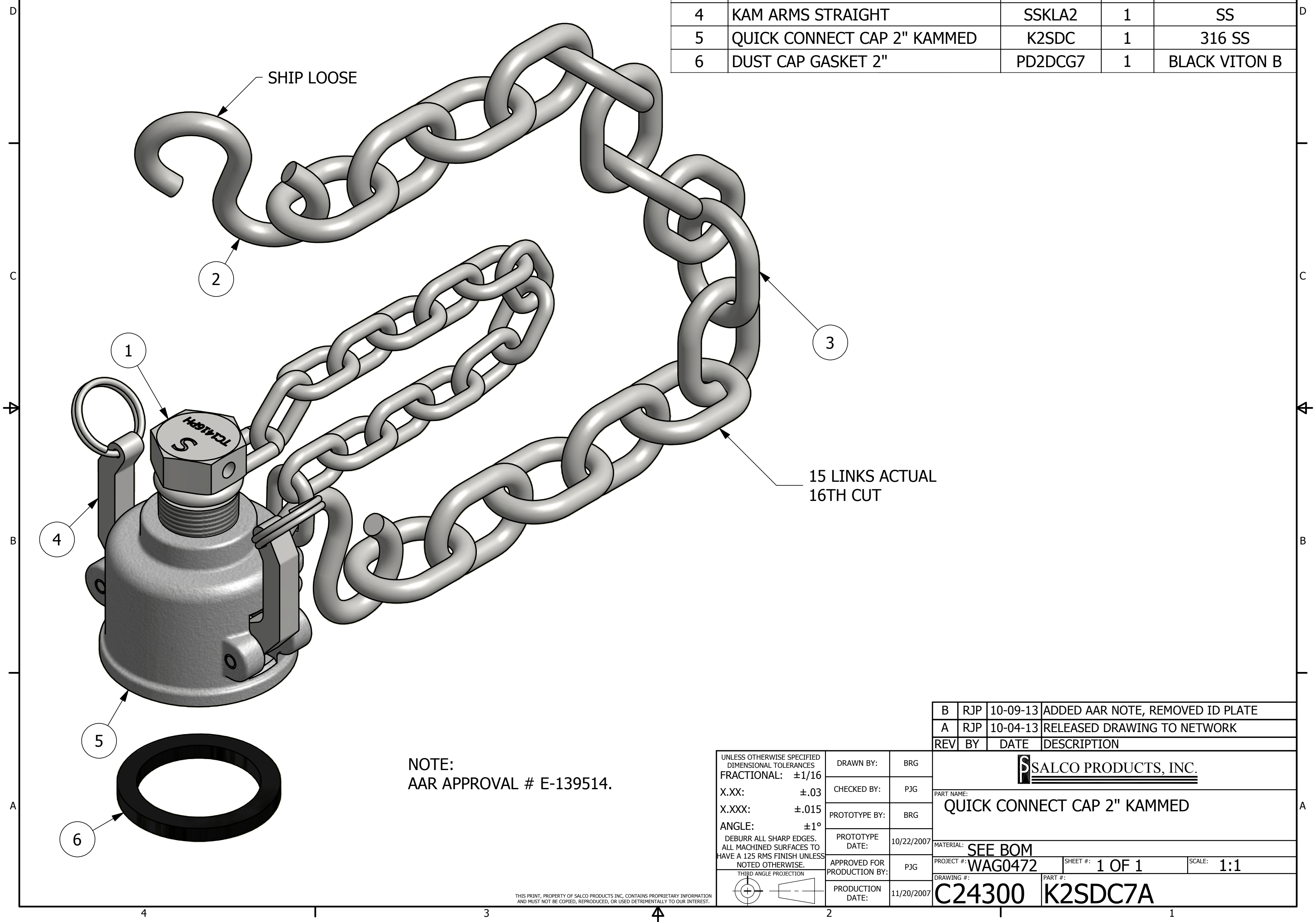


NO.	PART NAME	PART#	REQ'D	MATERIAL
1	PLUG ASSEMBLY 1"	TC1416PAH	1	416 SS
2	S-HOOK 3/8"X3 1/2"	SC38SHS	2	18-8 SS
3	CHAIN LINK 3/8"	SC80	16	18-8 SS
4	KAM ARMS STRAIGHT	SSKLA2	1	SS
5	QUICK CONNECT CAP 2" KAMMED	K2SDC	1	316 SS
6	DUST CAP GASKET 2"	PD2DCG7	1	BLACK VITON B



SHIP LOOSE

15 LINKS ACTUAL  
16TH CUT

NOTE:  
AAR APPROVAL # E-139514.

REV	BY	DATE	DESCRIPTION
B	RJP	10-09-13	ADDED AAR NOTE, REMOVED ID PLATE
A	RJP	10-04-13	RELEASED DRAWING TO NETWORK

<small>UNLESS OTHERWISE SPECIFIED DIMENSIONAL TOLERANCES FRACTIONAL: ±1/16 X.XX: ±.03 X.XXX: ±.015 ANGLE: ±1° DEBURR ALL SHARP EDGES. ALL MACHINED SURFACES TO HAVE A 125 RMS FINISH UNLESS NOTED OTHERWISE.</small>	DRAWN BY:	BRG
	CHECKED BY:	PJG
	PROTOTYPE BY:	BRG
	PROTOTYPE DATE:	10/22/2007
	APPROVED FOR PRODUCTION BY:	PJG
	PRODUCTION DATE:	11/20/2007

<b>SALCO PRODUCTS, INC.</b>		
PART NAME: <b>QUICK CONNECT CAP 2" KAMMED</b>		
MATERIAL: <b>SEE BOM</b>		
PROJECT #:	WAG0472	SHEET #: 1 OF 1
DRAWING #:	C24300	SCALE: 1:1
PART #:	K2SDC7A	