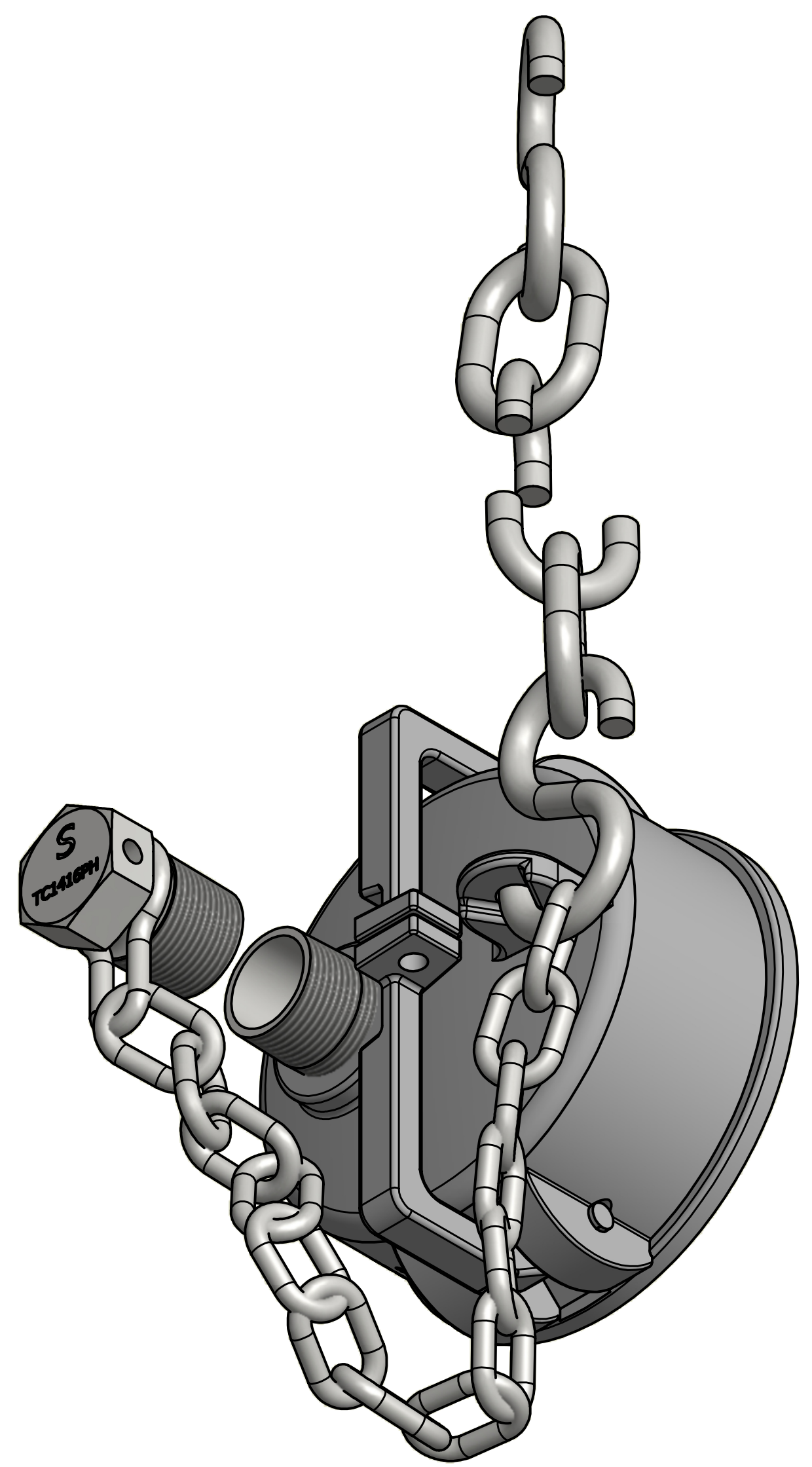
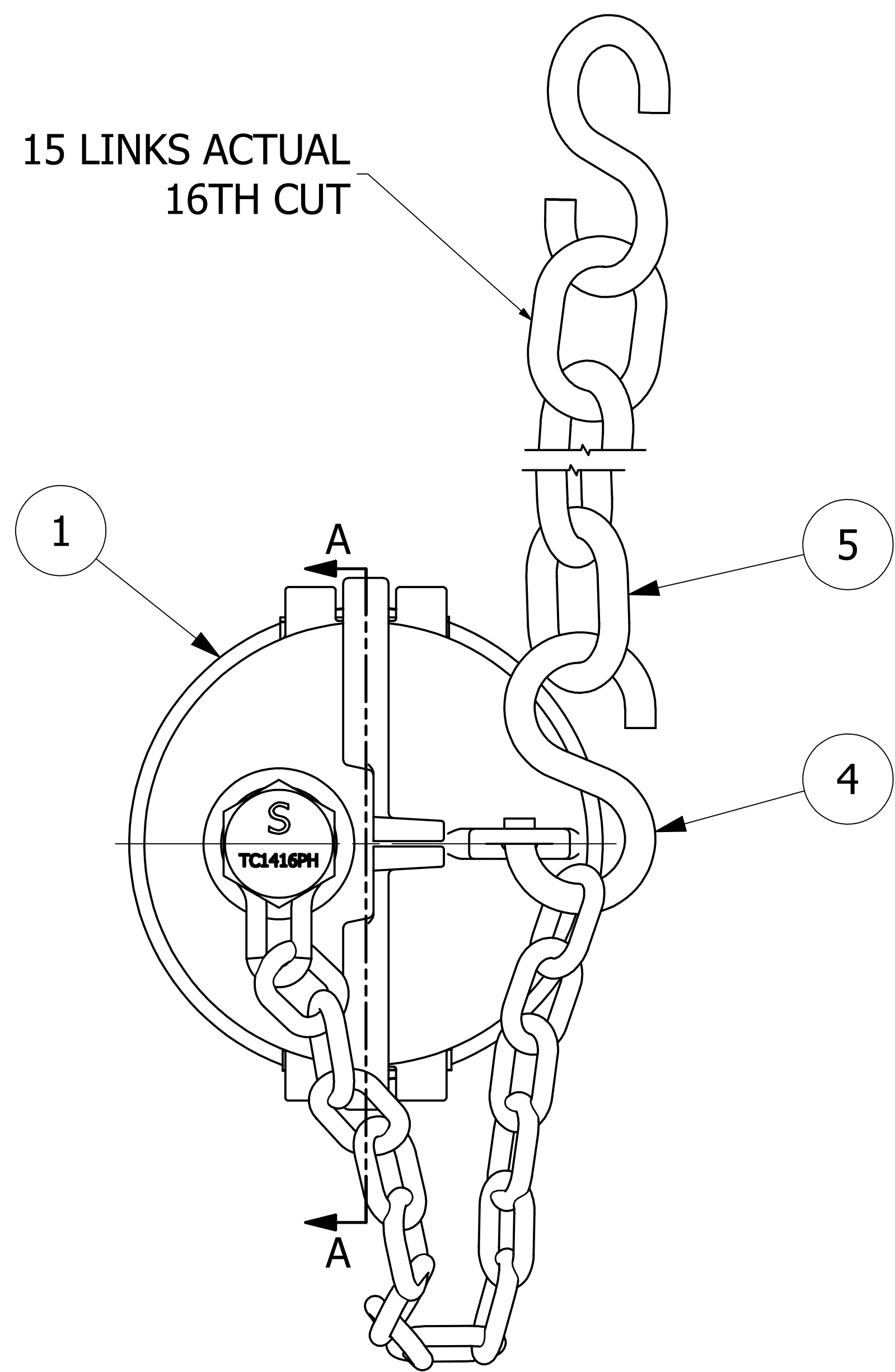
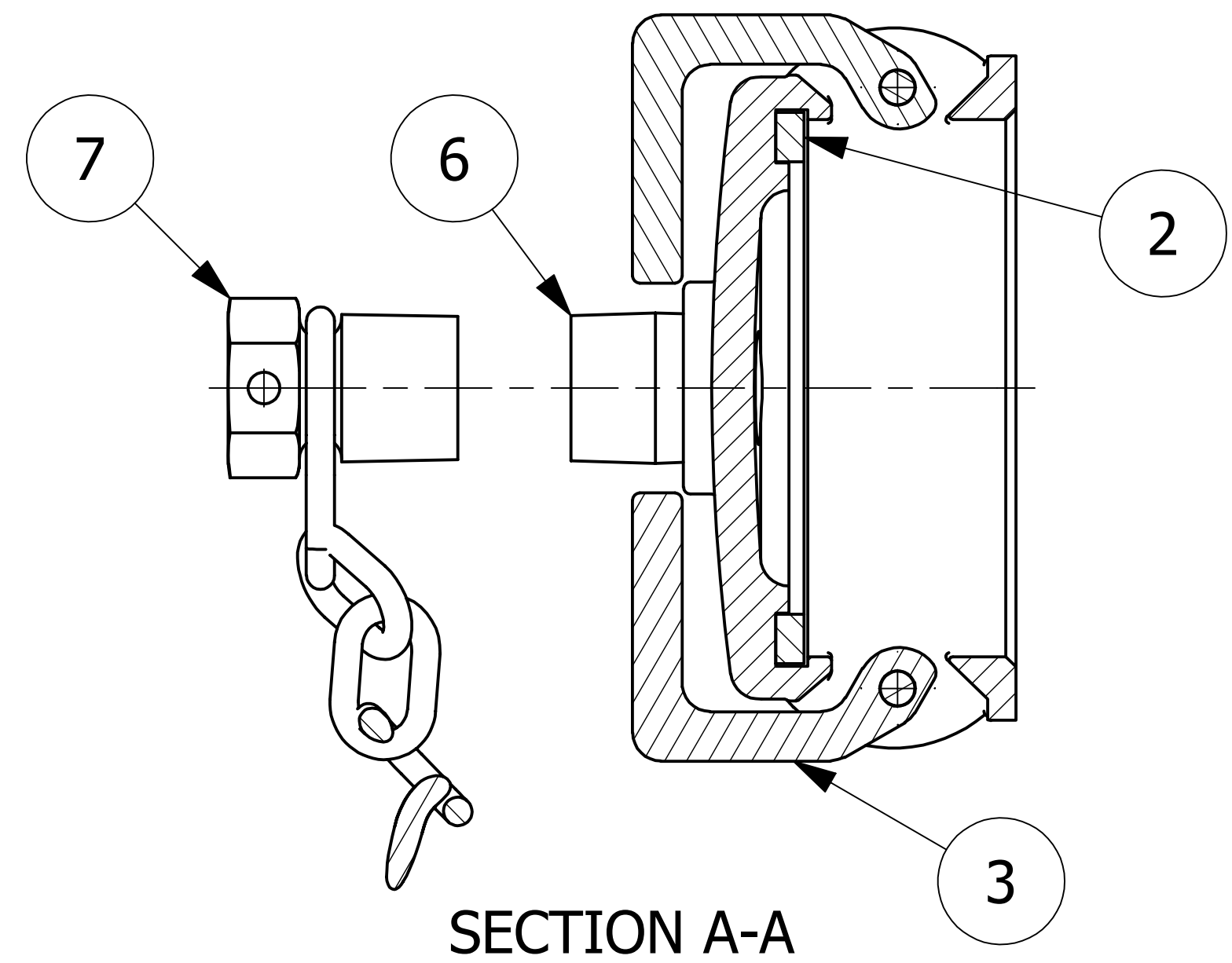


15 LINKS ACTUAL  
16TH CUT



ISOMETRIC VIEW

NO.	PART NAME	PART #	REQ'D	MATERIAL
1	QUICK CONNECT CAP 4" KAMMED	K4SDC	1	316 SS
2	DUST CAP GASKET 4"	PD4DCGW	1	WHITE FDA NITRILE
3	KAM ARMS CROSSOVER	KLA4	1	BRONZE
4	S-HOOK 3/8"X3 1/2"	SC38SHS	2	18-8 SS
5	CHAIN LINK 3/8"	SC80	16	18-8 SS
6	PIPE NIPPLE 1"	N1CS440	1	304 SS
7	PLUG ASSEMBLY 1"	TC1416PAH	1	416 SS



SECTION A-A

NOTES:

1. THIS ASSEMBLY IS NOT DOT APPROVED AND CAN BE USED ONLY ON AAR STENCILED CARS.
2. QUICK DISCONNECT MEETS A-A-59326D.
3. DUST CAP IS 316 SS GRADE CF-8M ASTM# A743.
4. AAR APPROVAL # E-139514.

F	RJP	12-20-13	AAR APPROVAL # WAS E-019022, MIL SPEC WAS MIL-C-27487G
E	TAJ	6-30-11	AAR APPROVAL # WAS E-039015
D	ACC	12-8-04	NIPPLE WAS K1X2SN
C	CHL	1-9-04	AAR APPROVAL # WAS E-939034
B	FOD	3-6-00	CHANGED PART NUMBER WAS K4SCNDCA
A	MRC	9-4-97	S-HOOK WAS 5/16" & CHAIN WAS 9/32" IN DIAMETER
REV	BY	DATE	DESCRIPTION

UNLESS OTHERWISE SPECIFIED DIMENSIONAL TOLERANCES FRACTIONAL: ±1/16 X.XX: ±.03 X.XXX: ±.015 ANGULAR: ±1° DEBURR ALL SHARP EDGES. ALL MACHINED SURFACES TO HAVE A 125 RMS FINISH UNLESS NOTED OTHERWISE. THIRD ANGLE PROJECTION	DRAWN BY:	ACC
	CHECKED BY:	ACC
	PROTOTYPE BY:	ACC
	PROTOTYPE DATE:	1/29/1997
	APPROVED FOR PRODUCTION BY:	ACC
	PRODUCTION DATE:	1/29/1997

**SALCO PRODUCTS, INC.**

QUICK CONNECT CAP 4" KAMMED

SEE BOM

1 OF 1 SHEET # SCALE: 1:1

D8561 K4SCNDCA