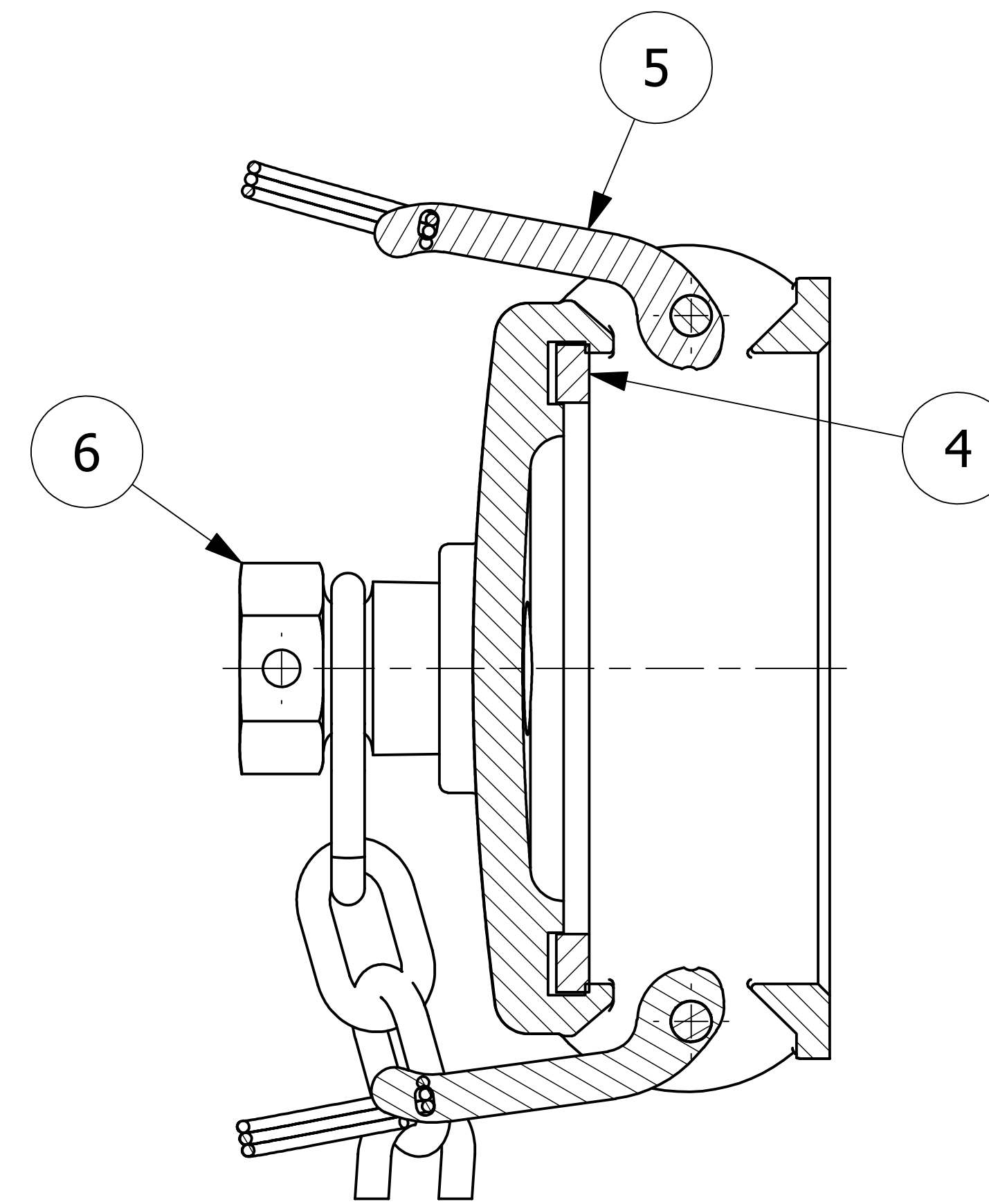


15 LINKS ACTUAL  
16TH CUT

**NOTES:**

1. THIS ASSEMBLY IS NOT DOT APPROVED AND CAN BE USED ONLY ON AAR STENCILED CARS.
2. QUICK DISCONNECT MEETS A-A-59326D.
3. DUST CAP IS 316 SS ASTM# A743 GRADE CF-8M.
4. AAR APPROVAL # E-139514.

| NO. | PART NAME                   | PART#     | REQ'D | MATERIAL      |
|-----|-----------------------------|-----------|-------|---------------|
| 1   | QUICK CONNECT CAP 4" KAMMED | K4SDC     | 1     | 316 SS        |
| 2   | S-HOOK 3/8"X3 1/2"          | SC38SHS   | 2     | 18-8 SS       |
| 3   | CHAIN LINK 3/8"             | SC80      | 16    | 18-8 SS       |
| 4   | DUST CAP GASKET 4"          | SSDCG     | 1     | BLACK NITRILE |
| 5   | KAM ARMS STRAIGHT           | SSKLA     | 2     | 304 SS        |
| 6   | PLUG ASSEMBLY 1"            | TC1416PAH | 1     | 416 SS        |



SECTION A-A

| REV | BY  | DATE     | DESCRIPTION   |
|-----|-----|----------|---|
| F   | RJP | 12-20-13 | AAR APPROVAL # WAS E-019022, MIL SPEC WAS MIL-C-27487G                        |
| E   | TAJ | 7-7-11   | AAR APPROVAL # WAS E-039015   |
| D   | CHL | 1-9-04   | AAR APPROVAL # WAS E-939034   |
| C   | FOD | 3-6-00   | CHANGED PART # WAS K4SDCA, UPDATED DRAWING WITH NEW STANDARDS & UPDATED NOTES |
| B   | MRC | 9-10-97  | CHANGED PART #  |
| A   | MRC | 9-4-97   | UPDATED BOM   |

|  |                             |            |
|--|-----------------------------|------------|
| UNLESS OTHERWISE SPECIFIED<br>DIMENSIONAL TOLERANCES<br>FRACTIONAL: ±1/16<br>X.XX: ±.03<br>X.XXX: ±.015<br>ANGULAR: ±1°<br>DEBURR ALL SHARP EDGES.<br>ALL MACHINED SURFACES TO<br>HAVE A 125 RMS FINISH<br>UNLESS NOTED OTHERWISE.<br>THIRD ANGLE PROJECTION | DRAWN BY:                   | ACC        |
|  | CHECKED BY:                 |            |
|  | PROTOTYPE BY:               | ACC        |
|  | PROTOTYPE DATE:             |            |
|  | APPROVED FOR PRODUCTION BY: | ACC        |
|  | PRODUCTION DATE:            | 10/17/1994 |

**SALCO PRODUCTS, INC.**

**QUICK CONNECT CAP 4" KAMMED**

MATERIAL: **SEE BOM**

PROJECT #: SHEET #: **1 OF 1** SCALE: **1:1**

DRAWING #: **D7142** PART #: **K4SDC1A**