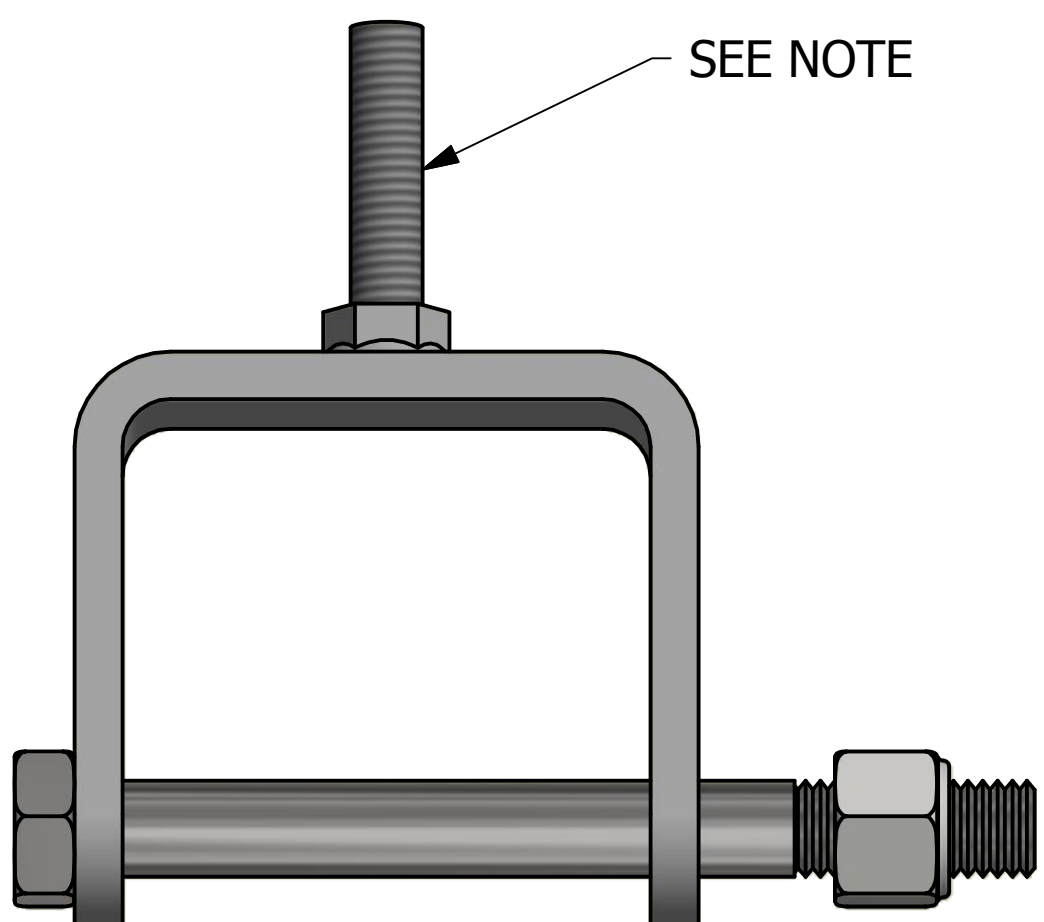
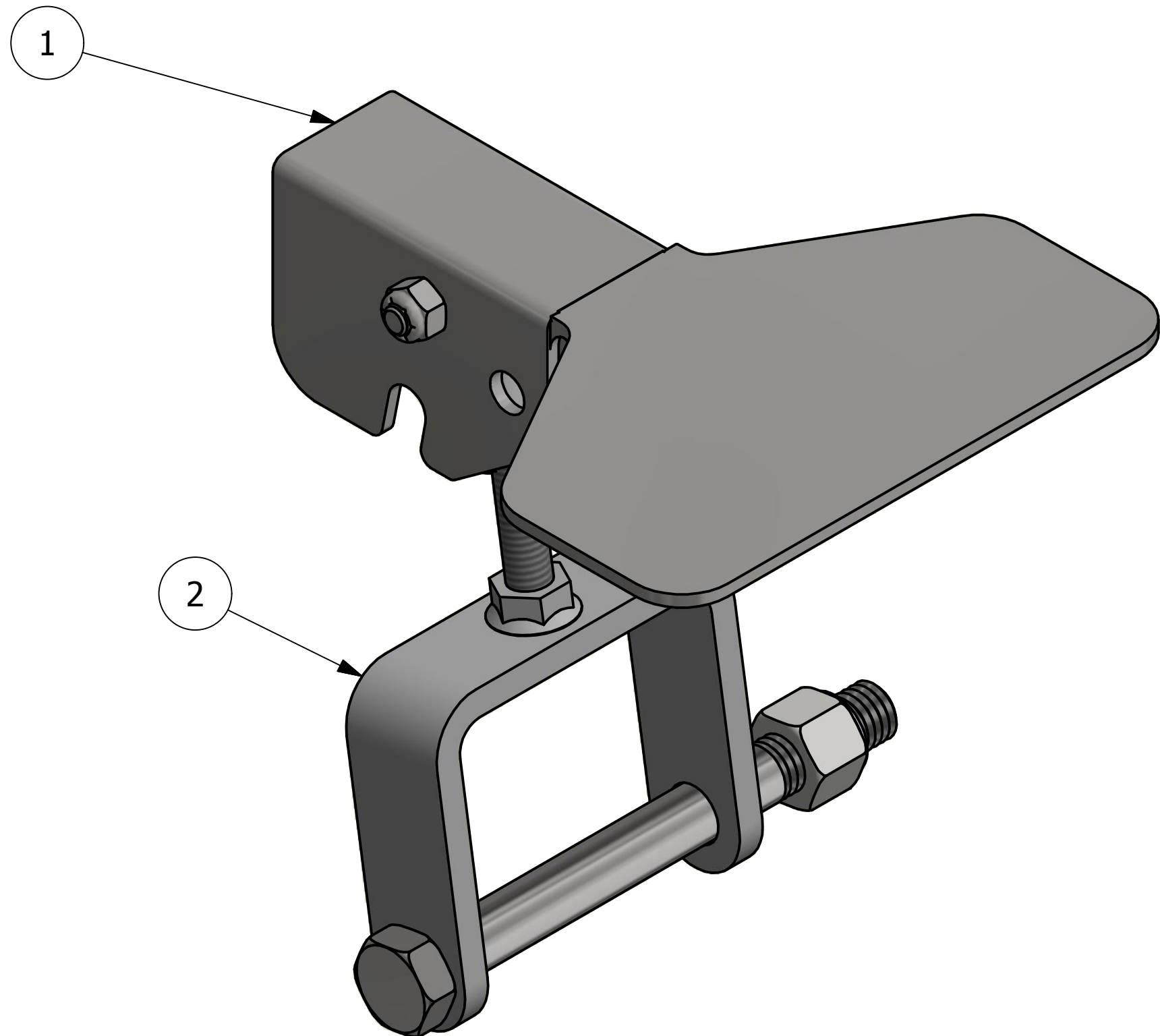
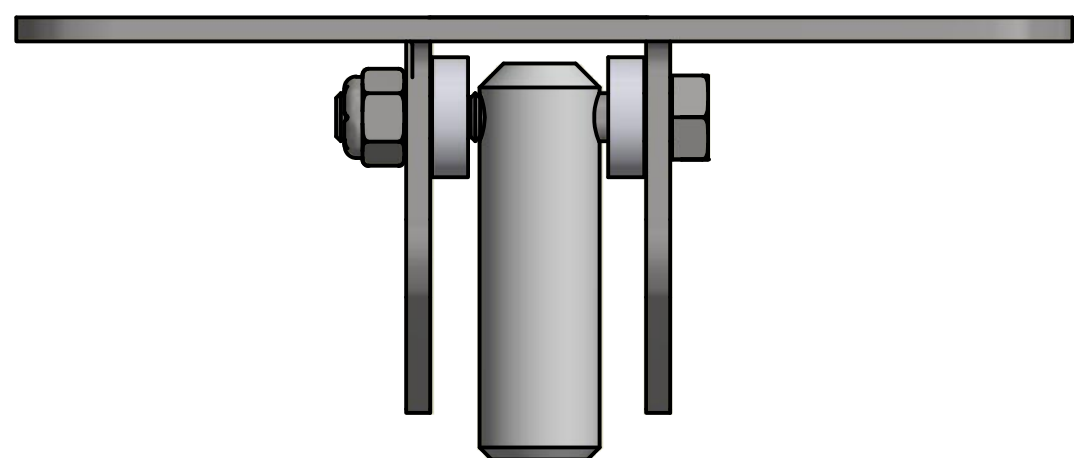


NO.	PART NAME	PART #	REQ'D	MATERIAL
1	HATCH COVER LATCH	LAL20LP	1	SS
2	HATCH COVER LATCH EYEBOLT ASSEMBLY	TE20PTUA	1	SS/CS



NOTE:  
APPLY JET-LUBE WHITE KNIGHT ANTI-SEIZE DURING ASSEMBLY.

REV	BY	DATE	DESCRIPTION
E	WEB	9-17-18	ADDED NOTE, UPDATED BOM MATERIAL
D	REH	02-19-10	UPDATED DRAWING & DELETED NOTES
C	CHL	01-11-01	ADDED SUBASSEMBLIES & NOTES
B	FOD	12-18-98	CHNGD MATERIAL DESCRIPTION OF ITEM #1
A	ACC	10-19-95	UPDATED BOM

UNLESS OTHERWISE SPECIFIED DIMENSIONAL TOLERANCES FRACTIONAL: $\pm 1/16$ X.XX: $\pm .015$ X.XXX: $\pm .005$ ANGLE: $\pm 1^\circ$ DEBURR ALL SHARP EDGES. ALL MACHINED SURFACES TO HAVE A 125 RMS FINISH UNLESS NOTED OTHERWISE. THIRD ANGLE PROJECTION	DRAWN BY:	BRW
	CHECKED BY:	CHL
	PROTOTYPE BY:	BRW
	PROTOTYPE DATE:	10/28/1994
	APPROVED FOR PRODUCTION BY:	ACC
	PRODUCTION DATE:	10/28/1994

**SALCO PRODUCTS, INC.**

PART NAME: **HATCH COVER LATCH ASSEMBLY 20"**

MATERIAL: **SEE BOM**

PROJECT #: \_\_\_\_\_ SHEET #: **1 OF 1** SCALE: **1:1**

DRAWING #: **C7178** PART #: **LAL20PT**