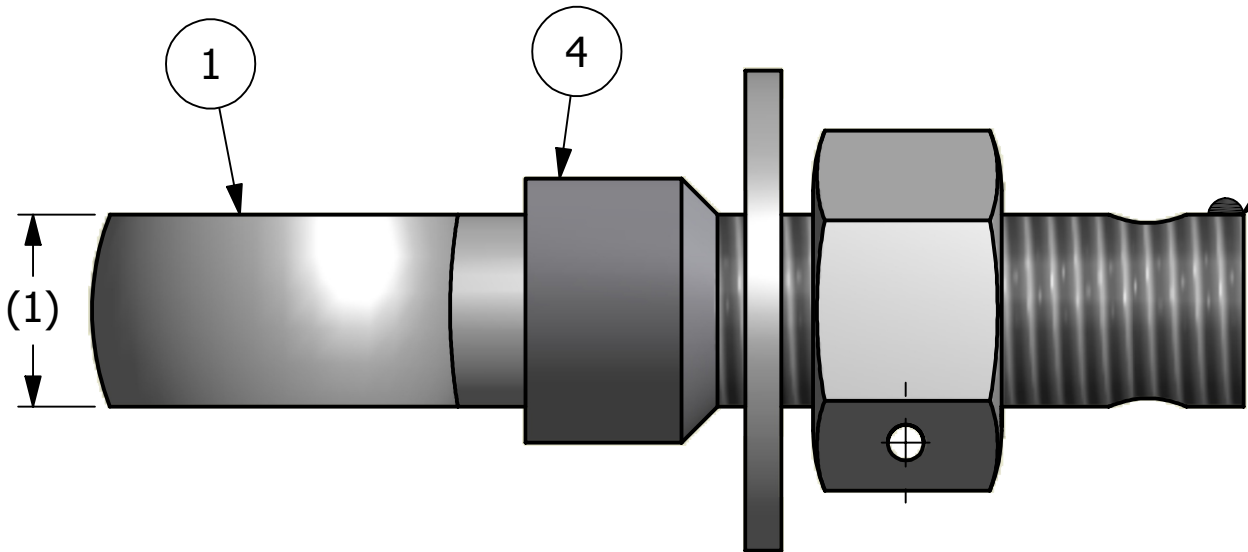
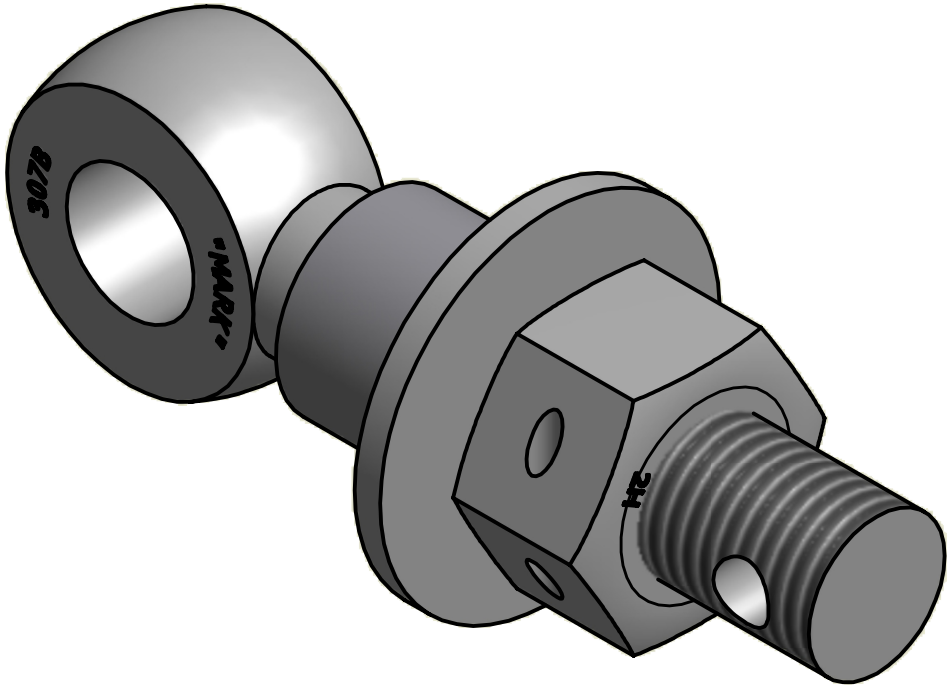


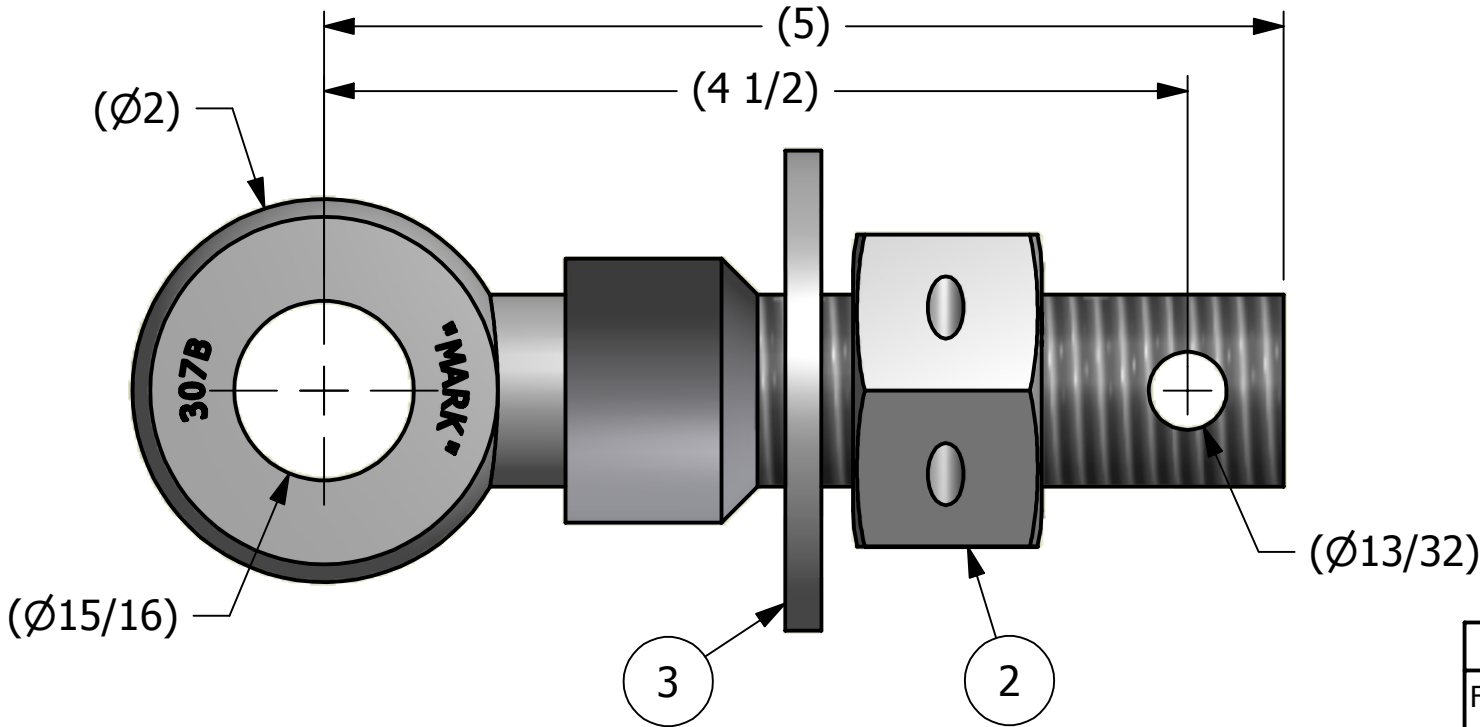
2		1		
NO.	PART NAME	PART #	REQ'D	MATERIAL
1	EYEBOLT 1"X5"	EBR15HFT	1	CARBON STEEL
2	HEAVY HEX NUT 1"-8	N1XH	1	CARBON STEEL
3	FLAT WASHER 1"	WASH1P	1	CARBON STEEL
4	EYEBOLT SAFETY COLLAR 1"	COLLAR1S3T3	1	303 SS




APPLY A BEAD OF WELD TO THE TWO END THREADS
AFTER INSTALLING WASHER, NUT AND COLLAR



ISOMETRIC VIEW



NOTE:
APPLY JET LUBE(PFPE GREASE) TO WORKING THREAD AREA,
THE BOTTOM FACE OF THE NUT AND THE TOP FACE OF THE
WASHER.

A	TAK	9-25-12	ADDED NEW PART TO NETWORK	
REV	BY	DATE	DESCRIPTION	
<div> SALCO PRODUCTS, INC.</div>				
PART NAME: EYEBOLT ASSEMBLY 1"X5"				
MATERIAL: SEE BOM				
PROJECT #:		SHEET #:		SCALE:
120920FR		1 OF 1		1:1
DRAWING #:		PART #:		
B34238		EB15XHHFTATC3L		

UNLESS OTHERWISE SPECIFIED DIMENSIONAL TOLERANCES FRACTIONAL: ±1/16 X.XX: ±.03 X.XXX: ±.015 ANGULAR: ±1° <small>THIS PRINT, PROPERTY OF SALCO PRODUCTS INC., CONTAINS PROPRIETARY INFORMATION AND MUST NOT BE COPIED, REPRODUCED, OR USED DETRIMENTALLY TO OUR INTEREST.</small> THIRD ANGLE PROJECTION	DRAWN BY:	TAK
	CHECKED BY:	CHL
	PROTOTYPE BY:	TAK
	PROTOTYPE DATE:	9/20/2012
	APPROVED FOR PRODUCTION BY:	VD
PRODUCTION DATE:		9/25/2012