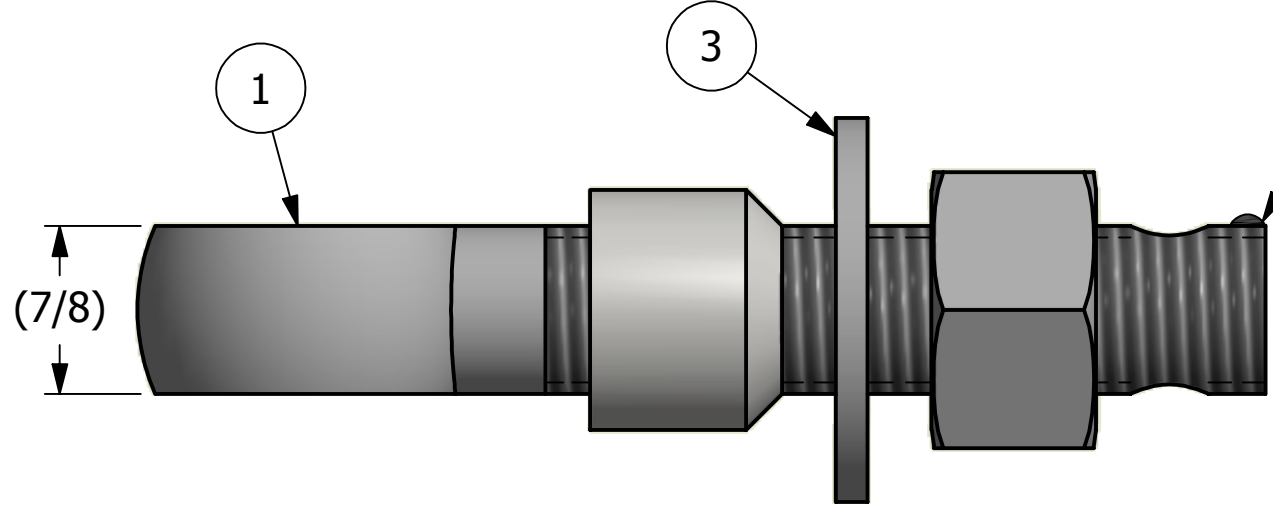
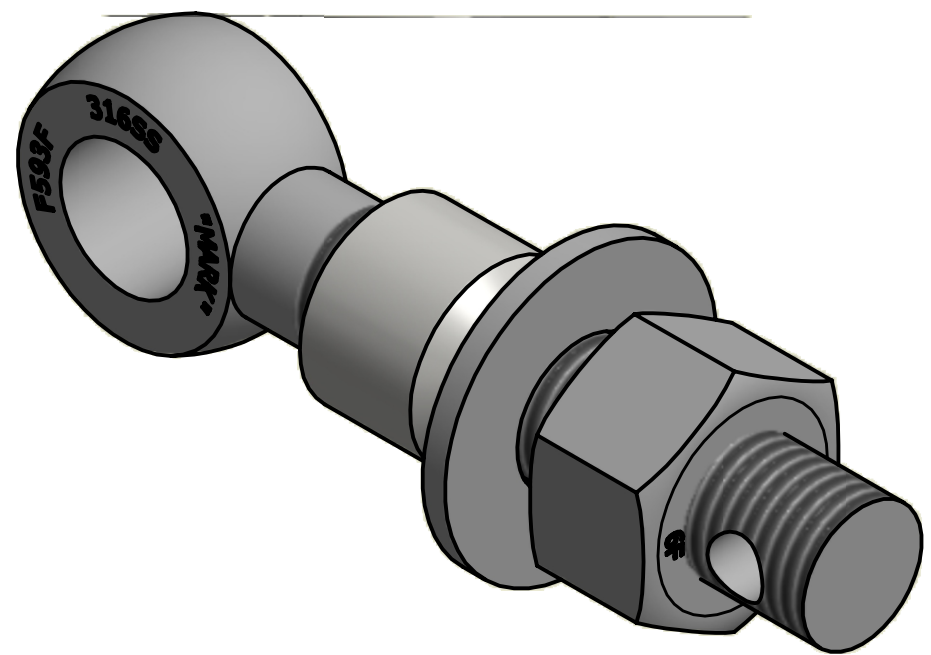


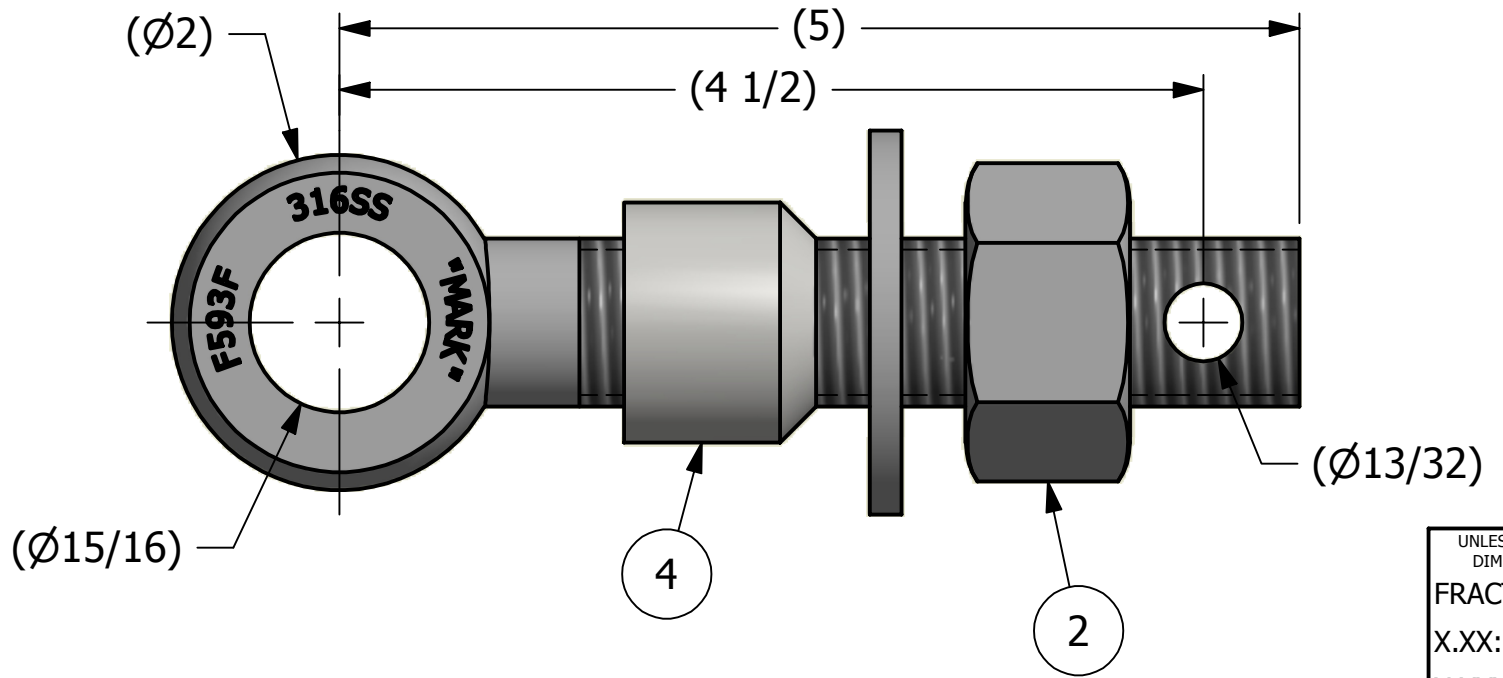
NO.	PART NAME	PART#	REQ'D	MATERIAL
1	EYEBOLT 7/8"X5"	EBR785H2FTS6	1	316 SS
2	HEAVY HEX NUT 7/8"-9	N78XS6	1	416 SS
3	FLAT WASHER 7/8" SAE	WASH78S6	1	316 SS
4	EYEBOLT SAFETY COLLAR 7/8"	COLLAR78S3T3	1	303 SS



APPLY A BEAD OF WELD TO THE TWO END THREADS, AFTER INSTALLING COLLAR, WASHER AND NUT



ISOMETRIC VIEW



A	CHL	3-19-13	RELEASED FOR PRODUCTION
REV	BY	DATE	DESCRIPTION

<small>UNLESS OTHERWISE SPECIFIED DIMENSIONAL TOLERANCES</small> FRACTIONAL: ±1/16 X.XX: ±.03 X.XXX: ±.015 ANGULAR: ±1° <small>DEBURR ALL SHARP EDGES. ALL MACHINED SURFACES TO HAVE A 125 RMS FINISH UNLESS NOTED OTHERWISE.</small> <small>THIRD ANGLE PROJECTION</small>	DRAWN BY:	CHL
	CHECKED BY:	VD
	PROTOTYPE BY:	CHL
	PROTOTYPE DATE:	12/18/2012
	APPROVED FOR PRODUCTION BY:	VD
	PRODUCTION DATE:	3/19/2013

SALCO PRODUCTS, INC.

PART NAME: **EYEBOLT ASSEMBLY 7/8"X5"**

MATERIAL: **SEE BOM**

PROJECT #: **121217FR** SHEET #: **1 OF 1** SCALE: **1:1**

DRAWING #: **B34918** PART #: **EB785XH2FTAS6TC3**

THIS PRINT, PROPERTY OF SALCO PRODUCTS INC., CONTAINS PROPRIETARY INFORMATION AND MUST NOT BE COPIED, REPRODUCED, OR USED DETRIMENTALLY TO OUR INTEREST.