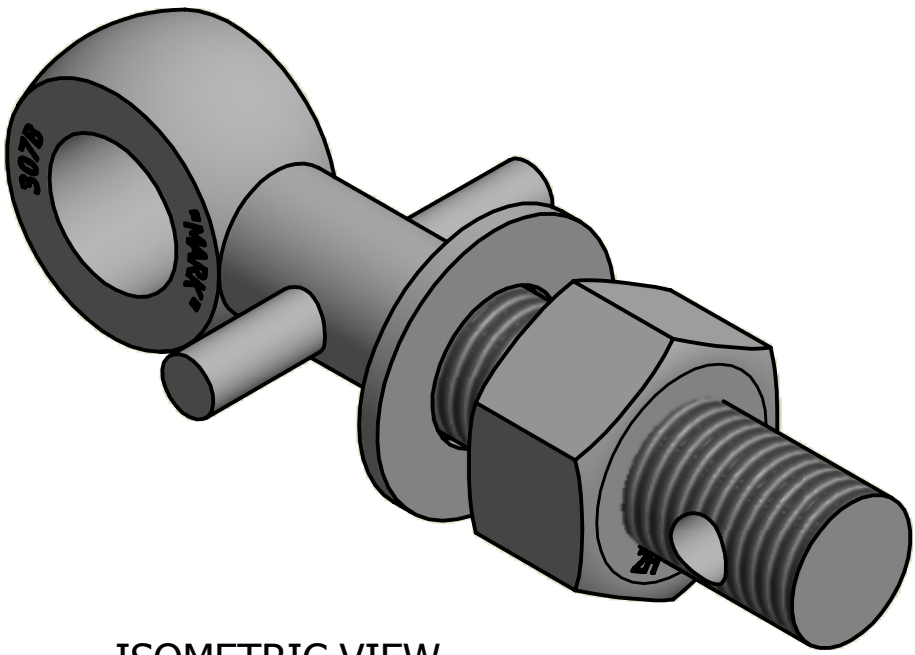
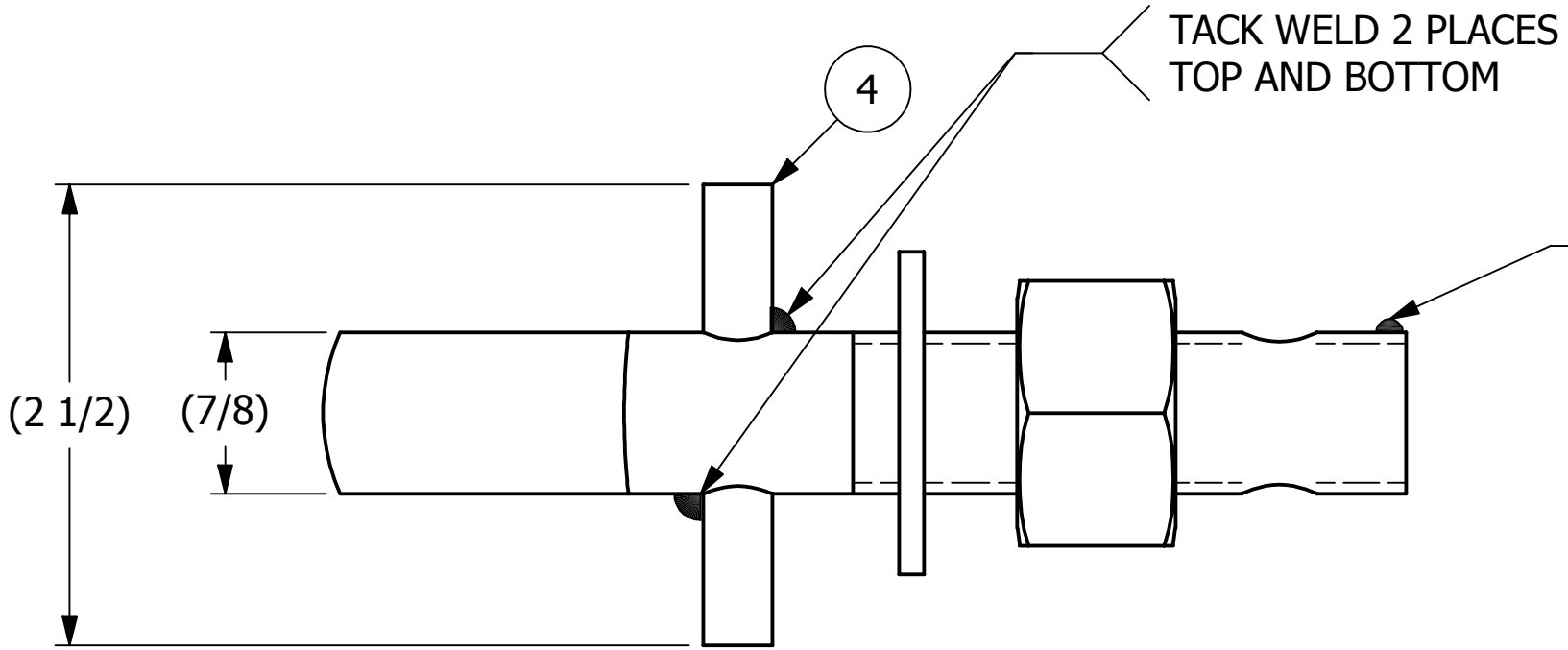
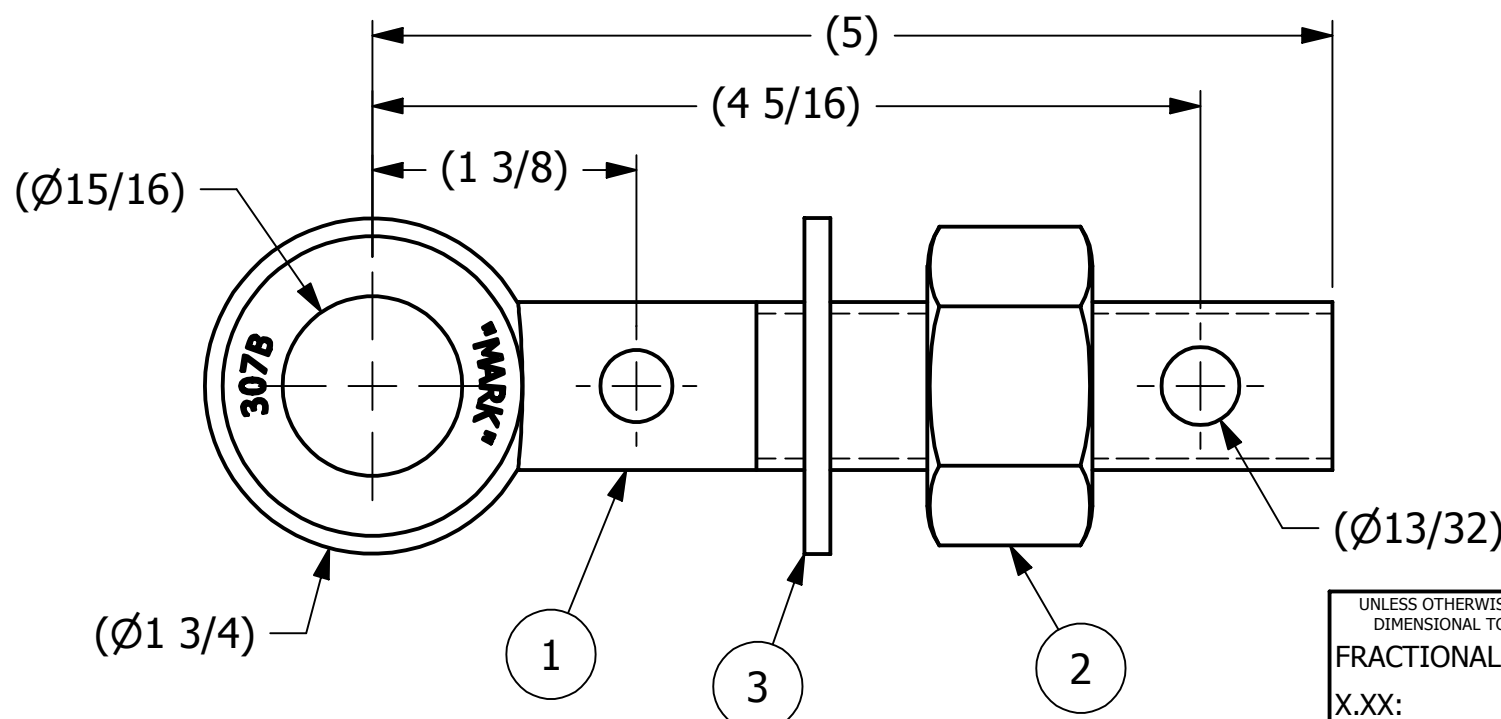


NO.	PART NAME	PART#	REQ'D	MATERIAL
1	EYEBOLT 7/8"X5"	EBR785HP	1	CARBON STEEL
2	HEAVY HEX NUT 7/8"-9	N78X	1	CARBON STEEL
3	FLAT WASHER 7/8" SAE	WASH78	1	CS Z/P
4	PIN 3/8"X2 1/2"	PIN375	1	CARBON STEEL



ISOMETRIC VIEW



A	GS	6-20-13	DRAWING RELEASED FOR PRODUCTION	
REV	BY	DATE	DESCRIPTION	
SALCO PRODUCTS, INC.				
PART NAME: EYEBOLT ASSEMBLY 7/8"X5"				
MATERIAL: SEE BOM				
PROJECT #: 130617FR2		SHEET #: 1 OF 1		SCALE: 1:1
DRAWING #: B36552		PART #: EB785XHA3P		

<small>UNLESS OTHERWISE SPECIFIED DIMENSIONAL TOLERANCES</small> FRACTIONAL: ±1/16 X.XX: ±.03 X.XXX: ±.015 ANGULAR: ±1° <small>DEBURR ALL SHARP EDGES. ALL MACHINED SURFACES TO HAVE A 125 RMS FINISH UNLESS NOTED OTHERWISE.</small>	DRAWN BY:	GS
	CHECKED BY:	CHL
	PROTOTYPE BY:	GS
	PROTOTYPE DATE:	6/18/2013
	APPROVED FOR PRODUCTION BY:	CHL
THIRD ANGLE PROJECTION	PRODUCTION DATE:	6/20/2013

THIS PRINT, PROPERTY OF SALCO PRODUCTS INC., CONTAINS PROPRIETARY INFORMATION AND MUST NOT BE COPIED, REPRODUCED, OR USED DETRIMENTALLY TO OUR INTEREST.